

Staveley Ice Rink Update

We've now completed the nib wall, levelled the base of the rink, installed two layers of insulation with the help of over 50 amazing local volunteers (How Good)!! Installed steel reinforcing, tied it together, added little cups for the reinforcing and piping and installed over 17km of Piping!

It's fair to say we are fizzing about how far we have come in such a short time!

We have now raised over \$960,000 and have just put in three more funding applications.

We really feel like we are on the home run! Remember every little bit helps!!! We just need around \$300,000 So a bit is still needed between now and June, a quick and easy way is to donate. The cost of a load of pipe or concrete is \$1,300 and get that 33% tax back. Just message us for an invoice. We have over 105 \$1,300 donations for pipe and concrete so far!! We will also have panels at the rink showcasing our wonderful donors.

We are very humbled by the generosity of our community and look forward to sharing this amazing community asset with you all this June!

Get in touch:

Staveleyicerink@gmail.com

Or you can pop over to our give-a-little page:

<https://givealittle.co.nz/.../staveley-ice-rink...>

Mayfield and Districts ANZAC Parade and Service

25 April 2023

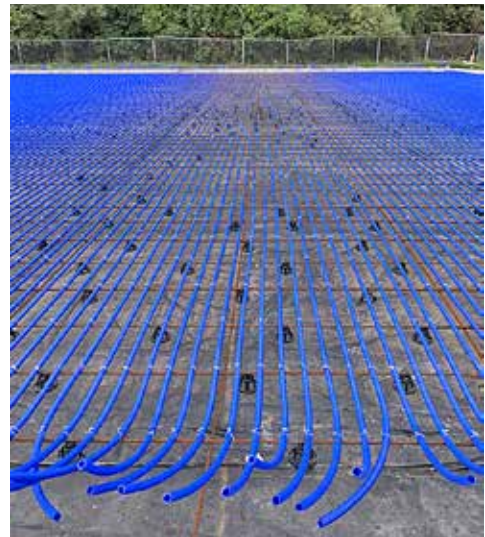
9.30 am	Assemble at Mayfield – Panther Rock Cafe car park
9.45 am	Parade leaves
10.00am	Service commences in Mayfield Memorial Hall

Service taken by Wendy Millichamp
Speaker Sir Graeme Harrison
Ashburton Silver Band in attendance
Collection for Mid Canterbury Rural Support

11.00 am approx. 4 x Artillery Gun Salute in Mayfield domain

Morning tea to follow, a plate appreciated

12.00 noon Golf match at Mayfield Golf Club. 12.30pm start



VICTORY LIME

NOT ALL LIME IS CREATED EQUAL

Talk to us today about your requirements
Contact us on:

☎ 0800 303 980

✉ admin@palmerresources.co.nz

📍 Peaches Rd, Mt Somers, RD 1, Ashburton 7771

www.vlime.co.nz



Donald Love Contracting



Windrowing & Baling Services

- 4x3 & 3x3 Square bales
- Round bales ■ Mow, mow-condition
- Tedder, rake, bale, tube & individually wrap & cart

Use your Ruralco card for a discount



STRAW & BALEAGE SUPPLY - Contact us for **CUSTOMISED DEALS** for straw delivered at harvest time so you can get the best quality straw at very competitive prices.



Ph **Donald** 027 279 8704 or **Robert** 027 304 8837
www.donaldlovewindrowing.co.nz



PLAINS Contracting



Cultivation & Forage Harvesting Services

- Reversible ploughing, sumo trio rip disc roll,
- 6m Allen Drill, direct & conventional, seed & fert
- Complete Forage harvesting service - mow, rake chop, cart, stack, weighbridge



Use your Ruralco card for a discount



Ph **Robert Love**
027 304 8837

Mayfield Playcentre

This month has been a busy one at Mayfield Playcentre, with the A & P show happening at the start of the month, giving lots of opportunities for crafts and activities to enter into the show! The tamariki enjoyed making pet rocks, egg carton creations and sand plates to name a few. Thanks to everyone that came along and supported our fundraiser train rides around the show, and checked out the produce shed where the Mayfield Playcentre display and children's entries were.

The team behind the scenes have also been finishing off the last touches of the internal revamp, the centre is looking fantastic and the children are enjoying the new resources and play spaces that have been created.

We have a mushroom compost fundraiser coming up, so if you are into gardening or know someone who is, look out for the details and come grab some! All support from the community is greatly appreciated and means we can keep moving along with future plans for the centre.

We have sessions Mondays, Tuesdays and Wednesdays 9-12 throughout the school terms and welcome any visitors to come check out what we are up to!



Dedicated
to you

At Ray White Mid-Canterbury, our 22 dedicated team members are here to help from the moment you make contact.

From the receptionist to the salesperson who closes your sale, the strength of our team is in our combined commitment to ensuring your journey with us is a good one. We work together to make sure that with the Ray White team, you get the results you want. **Chat to us today on 03 307 8317.**

Ashburton
96 Tancred Street
Ashburton
03 307 8317
rwashburton.co.nz
ashburton.nz@raywhite.com

Tinwald
117a Archibald Street
Tinwald
03 307 8317
rwashburton.co.nz
ashburton.nz@raywhite.com

Methven
4/36 McMillan Street
Methven
03 303 3032
rwashburton.co.nz
ashburton.nz@raywhite.com

Real Estate Mid Canterbury Property Limited Licensed (REAA 2008)

The Methven Walking Festival

There is something for everyone at the 2023 Methven & Foothills Walking Festival. Bring the family for a few days to experience the famous Methven Scarecrow Trail and join in our Easter Egg Hunt at Awa Awa Rata and the Family Fun Day at the Enchanted Forest. Challenge yourself on the walks to Woolshed Creek or Scotts Saddle or discover the newly formed track to Sharplin Falls. For the history buffs you can join in on the History of Houses tour or learn more about our Railway history. In addition there are two well-being walks, a walk around the golf course and a walk for those with pooches. And if you love good food and wine – please join us for a walk around some of Methven’s well known restaurants.

Please note that if you prefer to just explore at your own pace; the Methven Walkway, Piwakawaka Walk and the Enchanted Forest are free and open every day for all to enjoy.

The Scarecrow Trail runs every day of the April school holidays and all other event dates and times are listed on the calendar with more information available by clicking on each event listing or link. Please register here for all events. Events will be weather dependent and some may have limited numbers.

For more information see our FAQs or email us for more information. We hope that people will get out and about in the fresh country air and discover our amazing walks in the Methven & Foothills area. Make Methven your destination to relax and recharge.




Mt Somers Excavation Ltd



- GENERAL FARM MAINTENANCE
- ALKATHENE PIPE LAYING
- IRRIGATION MAINLINE TRENCHING
- 8, 14 & 20 TONNE DIGGERS
- TIP TRUCK & TRAILER
- GRADER
- SCREEN SHINGLE SUPPLIES
- TREE REMOVAL

Alistair Parris Owner / Operator - 20 Hinds Gorge Rd RD 8 Ashburton 7778
 Ph: 027 434 7278 | E: mtsomersexcavation@xtra.co.nz | www.mtsomersexcavation.co.nz



UPCOMING EVENTS

METHVEN & FOOTHILLS
Walking Festival

April

- (SAT) 8 SHARPLIN FALLS WALK #1
- (SUN) 9 EASTER EGG HUNT
- (MON) 10 SHARPLIN FALLS WALK #2
RAILWAY HISTORIC WALK
- (TUES) 11 HISTORIC HOUSES WALK #1
GOLF COURSE WALK
- (WED) 12 WOOLSHED CREEK HUT WALK
WELLBEING WALK
- (THU) 13 DOG WALK
WINE & FOOD TOUR
- (FRI) 14 SCOTTS SADDLE TRACK
HISTORIC HOUSES WALK #2
- (SAT) 15 ENCHANTED FOREST FAMILY DAY
- (SUN) 16 WALK & TALK WITH JESS
RAILWAY HISTORIC WALK #2
- 8-23 SCARECROW TRAIL

REGISTER AT METHVENWALKINGFESTIVAL.NZ

COMPUTERS FIXED *FAST* FIRST TIME




03 308 3400
www.mypc.nz
144 Moore Street, Ashburton

Computing Solutions



WWW.PANTHERSROCK.COM

IT'S ALL GO AT PANTHERS ROCK

It's been a year since Deb and Nick took over Panthers Rock, and they have a lot to be proud about.

"We've kept things simple and focus on having great food and friendly atmosphere" says Deb.

If you haven't been in to see them yet, then don't wait any longer. With a fresh new look inside it is worth checking out.

The Quiz nights on the last Thursday of each month have been a hit, along with drink and food deals throughout the week.

The staff smile as you walk in and the Head Chef, Reggie, sure knows what he's doing.

Keep an eye on what they are up to by following them on Facebook or the website.

The Old Post Office Library



A newish book in our library is

The Clarence - People and places of Waiau Toa.

Rural journalist Tim Fulton spent approximately 3 years researching, interviewing and writing *The Clarence*.

The Clarence River runs for more than 200 kilometres through mountains and river valleys with its headwaters above Lake Tennyson on Saint James Station. From there the Clarence flows between the Inland and Seaward Kaikouras, through Molesworth, Clarence Reserve, Muzzle and Bluff, then the farms and stations of the lower Clarence before it flows out into the Pacific.

Maori living at the mouth of Waiau Toa Clarence used the river as a pathway for at 750 years and Tim's book is a story of rural life including the history and culture of the local Maori.

In the 1850s land in the Clarence was taken up for farming and it became one of two main routes from Nelson to Canterbury.

This book is a rich collection of stories and photographs of the people and places (past and present) of the Clarence.

I highly recommend it.

For those readers who enjoy crime novels (especially those written by Scandinavian authors) I suggest **Knock Knock** by Anders Rosland. There is a new copy back on the library shelves.

Anders Rosland is a Swedish author and journalist who, for many years, worked as a news reporter specialising in criminal and social issues so has credentials as a crime writer!

Get Your Dancing Shoes On

The Dance Section of the Ashburton Club & MSA is coming to the Mt Somers Hall on Friday 28th April 7pm-10pm.



We are a social group dancing foxtrots, waltzes and others.



We welcome anyone who would like to join us for the evening, maybe learn a basic foxtrot, or just enjoy the music and have a yarn.

Enquiries to Alan & Adrienne Ayers, phone 0274 414 085 or 3024 779.



The story is about a Criminal Inspector who was called to the scene of a brutal crime 17 years earlier. The only survivor (and witness) was the 5 year old daughter of the victims. The girl was placed in witness protection and the case went cold. When the apartment where the crime had occurred is the scene of a mysterious break-in the Inspector fears the witness is in danger of being silenced and races to find her....

Happy Easter and happy reading

RM

ALL SAINTS ANGLICAN CHURCH, RUAPUNA

A COMMUNITY MEETING

will be held on the
11th May at 7.00 p.m.

at the Ruapuna Hall, Supper Room
to discuss the future ownership / sale
of the Church building.

Enquiries to the Church Wardens,
Pauline Hewson 3036 397
Marion Jacobson 027 3607 180

Steady As You Go (SAYGO)

You could save yourself from a fall by attending SAYGO classes.

SAYGO improves:

- Balance & leg strength • Flexibility • General fitness & well-being
- Falls are the most common cause of injury in older people
- One third of people over 65 fall each year
- Half of people over 80 fall each year
- Designed for men and women
- Falls are not a natural part of ageing and are almost always associated with weakened leg muscles and poor balance

So come and join us for an hour. Classes every Wednesday, Staveley Hall 2pm. For enquiries, phone Annette Syme 3030 803

Walk 1 March: Balmacaan Saddle

Many members turned up for a great walk in a beautiful day. Fantastic views of Rangitata River from top of the Saddle.



**Winter Grazing Available
Ruapuna Area**

30 Hec Kale
20 Hec Fodder Beet
Barley Straw and Oat
balage available
Good cattle yards

Self feed standing preferred option
but can provide labour
to feed stock if required

Phone Andrew 027 4701 067

We are a small, unique community preschool and we currently have limited spaces available on our Monday, Wednesday, Thursday and Friday sessions. Sessions are 8.30 - 3pm school terms.

We offer 20 hours free for 3 years and over otherwise \$5 an hour for our 2 year olds.

Please contact Chantelle at Peel Forest Preschool on 03 6963 740 or come out and visit us and meet the team and see what our centre can offer your whānau.



**HEYBROOK
BUILDING LTD**



New Builds Lifestyle sheds
Alterations Renovations
Farm Buildings General Maintenance

Phone Thamis for all your building needs

022 354 6524

heybrookbuilding@gmail.com



Painter Available

Spruce up and protect your property with a coat of paint!

Interiors, exteriors, roofs and weatherboards.

Pressure washing, airless spraying, and a first-rate finish.

Friendly, professional service, good rates, excellent local references.

Call Wolfie for a free quote. Distance no problem.



Ph 0279 624 841 or 03 693 9803

Fert Solutions
 Fertiliser Spreading Specialists
 Liquid, Granule and Lime

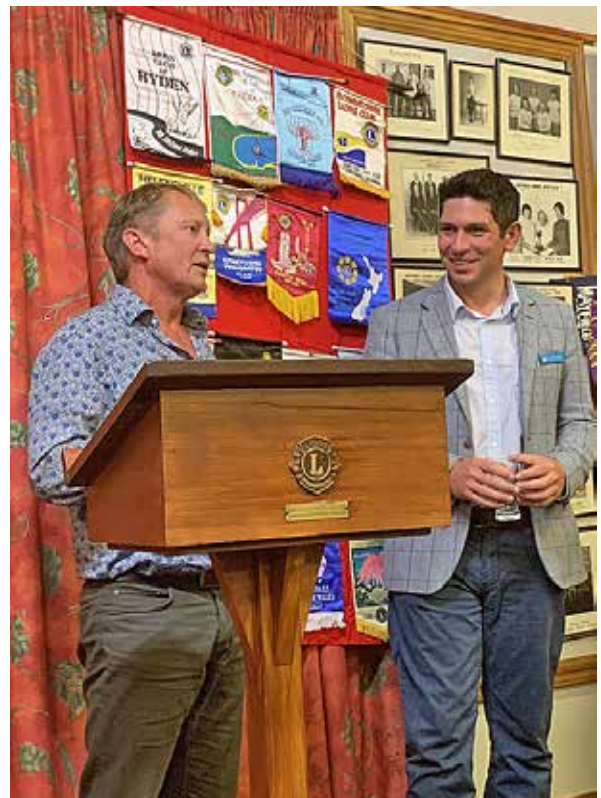
Ricky Taylor
 027 648 6856
 ricky@fertsolutions.co.nz

www.fertsolutions.co.nz



Mayfield and Districts Lions Report March Meeting

At our March meeting, our speaker was James Meager, the National Party candidate for the Rangitata Electorate. James was born and raised in Timaru, and now lives in Ashburton. He spoke about his early school years attending Timaru Boys High, then going on to study at the University of Otago, gaining a Bachelor of Laws and a Bachelor of Arts. He went on to work for MP Chris Bishop, then Deputy Paula Bennett, and later became an advisor to Bill English and Simon Bridges. James is currently a self employed consultant.



Harvey Smith thanking James Meager.

At the A&P show we successfully ran our chocolate wheel again, with all profits going towards the North Island Flood Relief Fund.

We are still looking for candidates to sponsor for the Berwick Outdoor Experience. Our Lions Club is keen to hear from anyone who would be interested in attending.

The course is open to those who are 18 years or older, who would benefit from an outdoor challenge, set in a non competitive, safe and supportive environment. The Berwick Outdoor Experience has provided many opportunities over the last 30 years for participants to challenge themselves and achieve personal goals beyond their imagination.

Cross Contracting Ltd

Experienced operators with over 45 years local knowledge

For all your digging requirements

- Stock water race cleaning
- Irrigation race cleaning
- Disposable pits
- Soak Pit • Trenches
- Gorse fence & shelter belt removal
- Irrigation mainline trenching
- Shingle screening bucket
- Tip truck hire
- Tree stump removal & root raking
- Operating three diggers
- On farm shingling – laneways, stockyards, water troughs
- Pipe line installation & repairs
- Cow lane cleaning

Grader and 20 ton digger available on request

Phone Ron
021 347 958 or 303 6067

2003069

This is an 8 day course designed to learn and build skills that lead to a higher level of self-esteem by Teamwork, Leadership, Confidence and Initiative. This course is very similar to Outward Bound. Over the 8 days participants take part in First Aid; Tramping; Abseiling; Kayaking; Mountain Biking; Orienteering; Goal setting and Mental Health Management, and many other fun activities, all within a team environment. Mayfield Lions contact is Morrie King 027 6342731.

We have a good supply of dry Firewood for sale;
Pine \$325/cord,
Bluegum \$400/cord,
Oregon \$350/cord
Contact Ron Cross 021347958



Carew School caterers

STOP BIRDS
hail, leaves, snow & vermin from blocking & damaging your spouting

Quality materials: BHP Colorbond steel mesh with unique patented louvre will even keep out pine needles. Will not rust or sag with age or load. 10 year warranty, range of colours
Proven in Australia & New Zealand over the last 15 years.

FOR SAFE, PURE DRINKING WATER FROM YOUR ROOF.
NOW AVAILABLE : STAINLESS STEEL MICRO MESH

Call **Rohan** anytime **Mon-Sat** for a no-obligation assessment & quote
03 982 8850 0800 486532

GumLeaf
www.gumleaf.co.nz

gateway vets

24 HOUR ON-CALL EMERGENCY SERVICES
Phone: (03) 693 9060

Servicing Mayfield, Mt Somers, Hinds and South Canterbury.

Independent and locally owned.
 Large and small animals.
 Delivery service for all farm supplies.

Cnr Woodbury / Main North Rds, GERALDINE
Phone: 03 693 9060
Email: clinic@gatewayvets.co.nz

Quality Hoof Trimming for Dairy Cows



Over 25,000 cows through our crushes last season.

Three mobile hydraulic crushes.



Lame cows treated rapidly & effectively

Hoof trimming to PREVENT lameness

Training in hoof care techniques

BEST PRICES FOR:

Top quality knives

Claw blocks

Hoof rasps and cutters

Hoof trimming crushes



0800 4 COWCARE

0800 4 26922

office@cowcare.co.nz



new builds - renovations
restorations - design
rural - residential
commercial - compliance



03 303 9830 0800 500 564
josephbuilders@xtra.co.nz



www.josephbuilders.co.nz

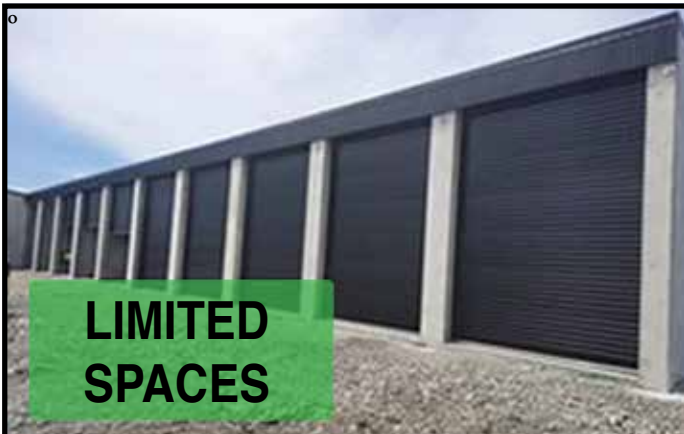
Walk 8 March: Lake Ida & Lake Catherine

It was drizzling on the way but stopped when we started walking. It wasn't sunny and calm enough to see the beautiful reflection on the lake but good for walking.



Walk 22 March Mt Barossa

We couldn't choose a better day for this walk. It was a hard long walk but we were rewarded with amazing views from 1346m. Cath Schikker took her favourite dress with her and dressed up for a fun. We tried on her dress and did a same. It's was great fun!



Ashburton Forks Storage Units

9 and 6 metre deep units with **Extra Height** to accommodate Boats, Motorhomes, Caravans etc.
24/7 monitored security. Power and lights in each unit.

To check availability contact

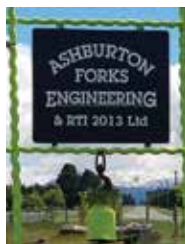
Daisy on 03 3030 802

or message 021 212 3181

Check out our webpage

storage-ashforks.co.nz/home/

**1807 Ashburton Staveley Rd
(AshForksEngineering)**



Neighbourhood Support



Ashburton District

Thoughts go out to the North Island and the weather events which have created a high volume of destruction to farming, agricultural and residential areas. As documented, capability and communication become the key for successful outcomes, in short neighbours helping neighbours in that first response to ensure care and safety. Neighbourhood Support triages with Civil Defence and FENZ to build that communication and connectivity in communities and we are lucky to have that on board focus so important for our District. Having a plan is great but knowing your neighbours, their capabilities and their skills, needs and resources is even better.

Happy to say that there are no reported crimes for the foothills community over February. Being aware of local links and who is around you go a long way towards safety and prevention.

As we march towards Autumn and with some cooler days we remind people to ensure their log burners are clean and in good repair, smoke alarms are working, heat pump filters clean ensuring best use. Dry firewood is a demand commodity so ensure your log piles are in sight of your home and not easily accessible to anyone passing by.

To sign up to Neighbourhood Support and become connected can be done by completing a form and being registered on our "Gets Ready" database. From this you will receive an up to date sheet with a list of your neighbours along with emergency information. You will also receive a newsletter with happenings in your neighbourhood. For further information please contact Sue 0272961006 or online: <https://www.neighbourhoodsupport.co.nz/join-now>

In the meantime stay safe.

Local vets, Nationwide support

We have everything you need at
VetEnt Mayfield.

Pop in and see Chantel
for all your farm and
animal health supplies.

VetEnt Mayfield
1984 Arundel Rakaia Gorge Rd,
Mayfield
P: (03) 303 6042



New Season Peastraw FOR SALE

Conventional squares - \$7.50 per bale.
Available in 21 bale bundles only.

Medium squares - \$45.00 per bale.

Available now.

Pick up anytime or please enquire about
delivery options.

All prices exclude GST.

Contact James Carr to order:

Phone: 027 202 6110

Email: james.carr@stradbrookfarms.co.nz



*For a
first Rate job
call us*

Rates

PLUMBING & DRAINLAYING

CRAFTSMAN PLUMBER / REGISTERED DRAINLAYER

Phone: 03 693-8512 • Mobile: 0274 373 158
33 South Terrace, Geraldine

- NEW HOUSING
- REPAIRS & MAINTENANCE
- ROOF REPAIRS
- RENOVATIONS



- DRAIN CLEANING
- LOGFIRE INSTALLATIONS
- CONCRETE CORING
- BACKFLOW TESTING

MAYFIELD SPRAYING LTD

Family
owned &
operated



For all your agricultural spraying and liquid fertiliser needs with competitive rates phone Tony today.



MAYFIELD SPRAYING LTD

Tony 027 248 7045
mayfieldspraying@gmail.com



20/03/17

Town or country – *Hospice is there* Access to Hospice Mid Canterbury for those living rurally

There's a misconception that Hospice Mid Canterbury (HMC) services are mainly for those in Ashburton and that those living rurally miss out. However, this is far from the truth.

Jane Wright, one of the founders of HMC, says that, "From the very beginning, one of our key motivators has been to ensure that people from throughout the Ashburton district with a life-limiting illness can access our services, regardless of where they live. We wanted to address social isolation, particularly for those living rurally."

Eight years on, HMC is supporting around 80 clients from throughout the district. Sarah MacAvoy, Support Co-ordinator for HMC, is keen to emphasise that services are available for rural clients wherever they call home.

JACKO

CONTRACTING & CONSULTING LTD



- Tracks & Lanes
- Dairy Lane Capping
- Tree Removal
- Logging/Forestry Work
- Farm Conversions
- Water Storage
- Dairy Shed Foundations
- Underpasses
- Irrigation Mainline Installation
- Project Management
- Commercial/Domestic Building Foundations
- Driveways

Free Quotes and Great Advice. Call Today!
0275 099 710

info@jackocontracting.co.nz

Find us on Facebook



Where these services are delivered depends very much on the circumstances and needs of the client. Therapies such as massage are available in Methven and a number of therapists will travel to a client's home if needed. Counselling is available for clients and caregivers, via zoom if travel is not possible, and face-to-face in Ashburton.

Volunteers play a big part in the delivery of HMC's services and a number live rurally, making access easier for rural clients. These volunteers include biographers who help clients write their life stories and also those who visit for companionship and support, including taking clients on outings. While the busy activity programme, including pamper sessions, arts, crafts and music, is Ashburton based, volunteers can help rural clients with transport to the Hospice Base if needed. Matt Roxburgh who takes the exercise programme, is happy to video the class in real time, for those who are interested in taking part but unable to attend in person.

Sarah emphasises: "Living rurally is no barrier to getting HMC services. We will try our hardest to meet your needs."

If you or someone you care about has a life limiting illness and would like our support, contact us on 307 8387, or 027 227 8387 or email support@hospicemc.nz.

See also our website www.hospicemc.nz and look for Hospice Mid Canterbury on our facebook and Instagram pages.



Contact Ben Walls for all your contracting needs

027 436 9133

ben.walls@quigleycontracting.co.nz

Quigley
CONTRACTING



www.quigleycontracting.co.nz



SHEEP SHEARER CONTACT Bernie Doyle

"10 years experience. Specialising in lifestyle/small block holders"

Cell 021 0296 3712

Email berniefdoyle@hotmail.co.uk





Safer Mid Canterbury
Hakatere Haumarū
Together we're safer • Me uru kahikatea

Well autumn is here along with changeable weather. Great for practicing driving under different conditions. It's so important for our learners to drive in different weather, drive different routes and in different traffic conditions. Once you have your license and can drive without a supervisor it can be scary if you haven't practiced in all conditions. Best to do this with a calm and confident supervisor next to you.

So we like wet weather driving, heavy traffic driving and driving roads which we've never travelled on before. And daylight savings will end soon, which gives us the opportunity for night time driving without having to wait until about 10pm for it to get dark. So there is lots to enjoy about autumn.

We are happy to be back in class with our eleventh group of road code students. And they are going really well. We have lots of different resources to use, and are really happy to see the new version of the road code out this year. It's much less daunting to a beginner when the book is only half the thickness of previous versions. Once again we are a multicultural group, with students from Nepal, Colombia, India, Philippines and South Africa. It shows what a wonderful diverse society we

are. It's always great to see students helping each other, especially when English is a second language. Our next road code course will start in July. It will run for nine weeks and has twelve spaces available.

If you would like to be part of this amazing programme, either as a student, driving mentor or to volunteer in other ways, we would love to hear from you. Please contact Wendy Hewitt on 027 611 3301 or wendy.hewitt@safer.org.nz

We are also on Facebook, just search for the Mid Canterbury Rural Driver Licensing Scheme.

The Mid Canterbury Rural Driver Licensing Scheme is proudly sponsored by MPI, Waka Kotahi, The Lotteries Commission, Advance Ashburton Community Foundation, The Ashburton District Council, Braided Rivers Community Trust, The Lion Foundation, COGs, Community Trust Mid & South Canterbury and The Mid Canterbury Rural Support Trust.

Wendy Hewitt
Rural Licensing Co-Ordinator
Safer Mid Canterbury
44 Cass Street, Ashburton 7700
Ph: 027 611 3301
wendy.hewitt@safer.org.nz

Office hours - Monday to Friday 8.30 am to 4.30 pm

Mayfield Transport Ltd requires an Experienced Class 5 Livestock Driver

MTL provides:

- *Excellent hourly pay rate
- *Uniform and protective clothing
- *Work phone
- *Modern fleet
- *Top working conditions
- *Assistance in finding accommodation if relocating
- *Rostered time off
- *Loyal Clientele with solid working hours
- *Be part of small friendly progressive country transport team

The successful applicant will need the following attributes

- *Exceptional stock sense and handling ability
- *Be fit, healthy, punctual, reliable, have a strong work ethic and have the ability to work flexible hours.
- *Health and safety and wellbeing focused with HSAW act 2016 knowledge
- *Motivated to deliver top quality service to our customers and have excellent communication skills
- *Self - motivated, shows initiative and who can work independently as well as being an excellent team player with a positive attitude.
- *Complete phone app and paperwork in a prompt and tidy manner

Applicants for this position must have NZ residency or a valid NZ work visa.

Please email CV with two References to:

trucky@mtrans.nz or contact Andrew Carr on 027 470 1067





Photo is of Lucas Ruiz Ochoa and Carolina Contreras Oquendo.

Jo Luxton

MP for Rangitata

03 339 1030

RangitataMP@parliament.govt.nz

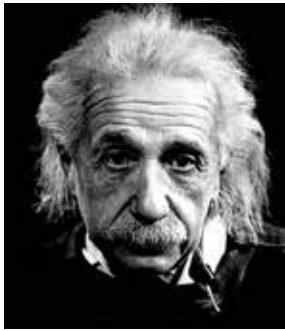
Office hours:

Monday–Friday, 9.30am–2.30pm

75 Harrison Street, Ashburton



Authorised by Jo Luxton MP, Parliament Buildings, Wellington



*“Life is like riding a bicycle.
To keep your balance,
you must keep moving.”*

Albert Einstein

Ashburton Crane Hire Ltd.

24hr Service

0274 192 554

ashburtoncranes2015@gmail.com

*“Reaching
New Heights”*



Rural Livestock

NZ Owned & Operated. Est 1988



MID AND SOUTH CANTERBURY

John Harrison (Mid) - 0272 262 964

Fraser Adams (Mid) - 0274 730 823

Quinten Botha (South) - 0274 730 885

Aaron McCall (South) – 0276 855 702

Contact one of our team for on farm advice and solutions. Experts in all classes of livestock for private sales, auctions, valuations, and prime stock drafting.

GORSE SPRAYING



ROSS BROWN CONTRACTING LTD

Registered Chemical Applicator
with **30** years experience

0274819190

www.gorsespraying.co.nz

email: gorseman@hotmail.com



A COMMENT:

People and pets: many people have no pets whatsoever this is a bit of a puzzle to me; I have all my years lived either on the farm or in the house have had pets. My parents, I don't remember having a dog in the house, my father in my memory had just one farm dog named Sandy, strange that name but his colour was sandy and what's more he was pretty useless, but was that his fault, I doubt it in my opinion that dog named Sandy was poorly trained, poorly fed and what's more poorly housed, I remember taking pity on him and making some effort to improve his housing at a time I think in my pre teenage years. Strangely enough that poor dog lived to a good age having lived on scraps from the house and milk from the cowshed.

Possibly about the time I became a teenager a man by the name of Buck Lammas the owner of the Glenroy station in the Upper Matakiki near Murchison gave me a dog, a young well-bred station dog. To me this was a wonderful friend, the first thing I would do on coming home from school was to head for the back yard and let my dog off the chain. I had built with a little help a good solid kennel with a gable roof I was proud of the dog which I named Glen as he had come from the Glenroy a large tributary to the Matakiki river about twenty miles south of Murchison. My father would run Glen while I was away at school which proved to be unfortunate as my father was not a dog man or for that matter an animal man. He appeared to spend his time cutting blackberry or cleaning ditches, that is between milking cows twice a day. At that time Blackberry was a major problem but what did puzzle me was that neighbouring farms appeared not to have to same problem, some time later I realised why this was, but went go into the details of that just now, except that it was a very real lesson to me, being that old saying of a stich it time saves nine!

I arrived home from school as usual this day heading straight to the back yard where the dog Glen would greet me only to have my mother calling to me to say Dad had shot Glen! I returned to my room and



agstaff

Good Buggers You Can Trust

Permanent and Temporary Staff Solutions

Experienced Stockmen

Fencers

Tailing Staff

Tractor Drivers

Specialised Rouging Gangs

Spraying Gangs

Give Andrew McDonald a call, he'll see you right!

0800 AGSTAFF

andrew@agstaff.co.nz

021 502 484

www.agstaff.co.nz

sulked, before long my mother called to say dinner was ready I came out taking care to not look in my father's, direction. He tried to show me a dog bite on his arm which I refused to look at, and I refused to communicate with him, what had he done to Glen to get that bite? I will never know. That dog was docile friendly and to me a delight, he badly needed more work and professional training, but what was wrong that day, was he a frustrated man taking out his frustration on that dog and the dog retaliated, I guess so. It was soon after I left school and was working full time on the farm often on my own that a neighbour by the name of Billy Woodcock stopped me on the road and said he had saved a dog for me, I was thrilled and from that day to this I will remember Billy for that and many other kind gestures. I have owned at least one dog from that day to this. There was a time when farming on Banks Peninsula that we had six dogs including one house dog. There has always been at least one cat in the house or nearby and until retiring to Ashburton anything from six to ten chooks, and they were chooks not chicken as almost every one calls them these days.

But dogs are the subject of the day; I run my dog Leo at either Argyle park or Devon park, both very good areas well cared for by the council, many others run dogs in these areas also, it can be a very social event taking dog to these parks we also visit the river from time to time. A very well meaning lady informed me that every boy should have a dog, emphasizing that this could solve a lot of adolescent problems. That may well be so, however no one should have a dog or cat or any pet unless they want to and are prepared to train, feed and nurture the said animal. The right dog in the right place with families or older folk living alone can serve a genuine purpose of comfort companionship and have a real therapeutic people of all ages. But I repeat don't have a dog or any animal companion unless you want the animal.

Cheers Denis

Work Wanted

Part or full time work on a farm in the Mayfield - Mt Somers area for semi-retired farm worker.

Experience with stock work, sheep and beef mostly, but has reared calves and worked with pigs and deer.

Experienced with fencing, water supply and general farm maintenance.

Ideal for farm-minding while you take a break.

Contact John on 0210 246 1321 or 03 3036 144

Operating in Mid Canterbury – 2023 Taege

4.8M Tine Air Seeder

- Taege 4.8m Air Seeder - Triple Box Drill
- 2 x 850L Hoppers & 1 x 200L Hopper (all three Hoppers are electrically drive)
- 4.8m working width
- Covering Harrows
- Tyre Roller
- 121mm Tine Spacing

Contact James to discuss how this type of drill may fit your system.

Phone: 021 999 270

Email: mccormick_james@live.com



Cultivating practical farm planning solutions

- FARM ENVIRONMENT PLANNING
- NUTRIENT BUDGETING
- SUPPORT WITH ON FARM COMPLIANCE



CG Ag
Practical farm planning



Talk to Chris Gibbs P 021 317 669 E chris@cgag.nz

www.cgag.nz



- STOCK
- BULK & GENERAL FREIGHT
- BLOWER TRUCK
- FERTILISER SPREADING
- PUBLIC WEIGHBRIDGE
- RAVENSDOWN STORE MAYFIELD



You Call, We Haul
Locally owned and operated

Ph: (03) 303 6102 Mayfield
Ph: 0800 MTRANS (687267)
Email: office@mtrans.nz

74 MAYFIELD KLONDYKE ROAD, MAYFIELD, ASHBURTON 7778

TAKE A STAND **VOTE**

WESTERN WARD BY-ELECTION 2023



Vote for the Western Ward

Voting packs arrive in mailboxes from 20 April.

Make sure you vote by 12 May
Find out more at **voteashburton.nz**



The local people who feature in our advertising are not standing in the 2022 Local Elections.

Jo Luxton

MP for Rangitata

03 339 1030

RangitataMP@parliament.govt.nz

Office hours:

Monday–Friday, 9.30am–2.30pm

75 Harrison Street, Ashburton



Labour



Authorised by Jo Luxton MP, Parliament Buildings, Wellington

“What of Art?

It is a malady.

Love?

An Illusion.

Religion?

The fashionable substitute for Belief.

You are a sceptic.

Never! Scepticism is the beginning of Faith.

What are you?

To define is to limit.”

Oscar Wilde, The Picture of Dorian Gray

Rifleman Pest Control

FARMS WANTED!!!!!!!!!!!!

Providing a **free service** from Mayfield to Methven that's carried out by a local farmer. References available.

All carcasses utilised.

I collect all animals shot and also provide other services like possum trapping and larger game animal control.

Call Laurie Aitken

027 3143 491

riflemannz@gmail.com



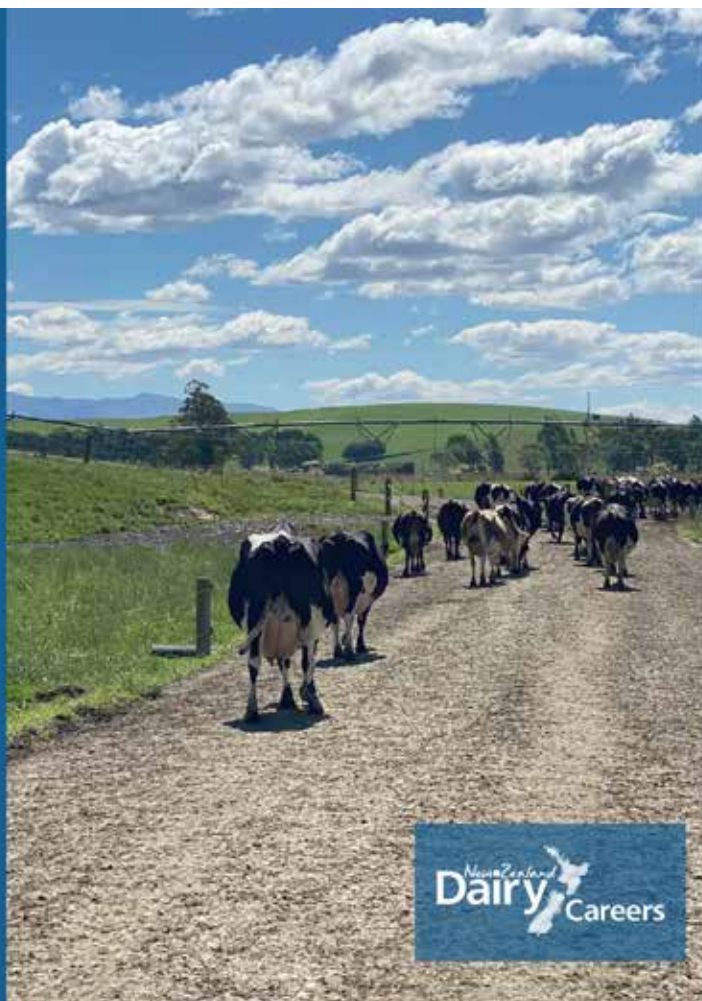
2-3 hares eat the equivalent of 1 stock unit and reproduce up to 10 young each year. Night shooting is the most effective method of control.

ARE YOU ARE LOOKING FOR STAFF?

We have career changers, recent trainees, dairy assistants and 2IC's who are ready to move their career to the next stage.

CALL US
03 971 5564

or visit us online
nzdairycareers.co.nz



Supporting Mid Canterbury families and businesses

Jo Luxton, MP for Rangitata

27 March 2023



We're focused on the bread and butter issues that matter most to New Zealanders. That's why we're taking a range of actions to reduce cost of living pressures on Mid Canterbury families and supporting communities as they recover and rebuild following the recent extreme weather.

From the start of April, we're significantly increasing support for seniors, students, beneficiaries and those on Working for Families. On top of this, we're making childcare and after school care more affordable for many low and middle income families, through changes to childcare assistance subsidies kicking in this week on April 1.

We also moved quickly to extend the fuel tax cuts and half price public transport until the end of June, because we know that transport is one of the biggest expenses for households right now.

These measures won't solve everything but they are practical steps that we can take to support Kiwis. Of course, there's still more we can do and we've indicated that bread and butter issues like the cost of living will continue to be a major focus for our Government.

The recent extreme weather events have put further pressure on people across the country. We're committed to supporting Kiwis through the response, recovery and rebuild – and we're in a strong position to do so.

The latest numbers show that, thanks to our careful management of the economy, New Zealand is well positioned to tackle immediate challenges and to build back better, safer and smarter.

A Small Selection of Vintage Fords passing through Mt Somers a couple of weeks ago.



Walk15 March Trig M Lake Lyndon

We traveled a long distance to near the Lake Lyndon. This walk started from starvation gully to reach the Trig M where you could have a fantastic views of Lake Lyndon.



Stockists and installers
of quality

PEDROLLO waterpumps

Pedrollo pumps are designed to lift water from wells, tanks or waterways to supply anything requiring a reliable pressurised water system.

Typical uses include homes, gardens, stock troughs, K-line and tank filling.

Available as 3/4hp, 1hp, 1 1/2hp, 2hp and 3hp sizes.

We have the water pump to suit your situation, call in today for more information

///A/C/L
ARTHUR CATES LTD

26 McNally Street, Ashburton 7700. Phone (03) 308 5397

"Do it Once, Do it Right"

Over 30 years experience servicing and supporting the local community

Earthworks

- Any type of Earthmoving



Laneways

- Lime capping



Ploughing

- Cable + Waterpipe Installation



Directional Drilling

- Trenchless Technology



Utility Detection Services

- Find it first



Demolition

- Residential and Commercial



Call us today for an obligation free quote.

GDC

Greg Donaldson Contracting Ltd



Office 308 8479 Mob 027 433 8003

Free Phone 0800 432 583 (GDC LTD)

Web www.gdc.net.nz Email office@gdcgroup.nz

2 Fords Road, Ashburton • 106 Hilton Highway, Timaru

NEWS FROM PLAINS PRESBYTERIAN PARISH

The Parish:

The parish continues to function in a rather quiet manner although this could be called satisfactory. When it comes to ministry, we are what Presbytery describes as vacant, we have no minister. Rev Johanna Warren filled the position of Interim Moderator last year but reached retirement age and moved to the far North in retirement in January.

Rev Eric Mattock the minister at St Andrews Presbyterian parish in Ashburton has been appointed Interim moderator for the present time.

The Parish is run by a Governance Council consisting of members: Annette Syme and Liz Depree (Parish Clerks shared position)

Jenny Logan & Fay Cuttriss (Rakaia)

Kay King & Kevin Taylor (Mayfield)

Elsa Hydes & Allen Redmond (Methven)

Rev Eric Mattock (Interim Moderator)

Finance is handled by the Governance Council

There is a property committee which meets as required under the leadership of Mrs Annette Syme.

There is also a Worship committee which is convened by Mrs Dorothy Knight of Rakaia.

There appears to be no Pastoral committee – an area which could well have urgent attention!

Miranda Addis is the executive officer and handles finance at the local level, Miranda resides in Rakaia. The majority of accounting is contracted to an accounting organization which specializes in church and charity accounting.

Retired ministers are called on to lead worship. The Rakaia Methven area is shared by the Rev Laurance Ennor and Rev John Titlow. In Mayfield and Staveley Paster Paul Eden is the regular worship leader.

Interim Moderator Rev Eric Mattock

Ph 307 7024

Parish Clerks, Annette Syme Ph 303 0803

Liz Depree Ph 021889341

Parish Contacts:

Kevin Taylor ph 303 6392

Kay King ph 303 6033

Website plainspresbyterian.co.nz

Facebook.com/ PlainsPresbyterianParish

WORSHIP SERVICES April 2023

Sunday 2nd April ST JOHNS METHVEN 10.30

Anglican combined at All Saints Methven

Sunday 7th April Good Friday St Johns Methven

9.30 am

Sunday 9th April St Johns Methven 10.30am

Sunday 16th April St Johns Methven 10.30am

Sunday 23rd April Trinity Mayfield 10.00am

Sunday 30th April St Johns Methven 10.30 am

MAYFIELD MT SOMERS ANGLICAN PARISH

ANGLICAN SERVICES

Priest: Rev Annette Eggleston

Holy Communion

Apr 2 10 a.m. St Aidan's, Mt Somers
Palm Sunday

Apr 7 **GOOD FRIDAY**
10 a.m. St Aidan's, Mt Somers

Apr 9 **EASTER DAY**
10 a.m. St Aidan's, Mt Somers

Apr 16 10 a.m. St Aidan's, Mt Somers
Harvest Thanksgiving
Followed by the Parish A.G.M.

Apr 30 10 a.m. All Saints, Ruapuna

May 7 10 a.m. St Aidan's, Mt Somers

The Rev. Michael Holdaway kindly took the service at St. Aidan's last Sunday, so that Harvey and I could go to the wedding of a nephew, which was held in Southland. The wedding itself was on the Friday, in a garden, followed by the reception which was held in a huge permanent marquee. The bride's family home was on the outskirts of Invercargill, and we were all invited there the following day.

We have probably all heard it said, that the further south we go in New Zealand, the better the hospitality is. In this case the hospitality was superb. There was absolutely no them and us. Everybody spoke to everybody and the food was wonderful. No bluff oysters! But crayfish and salmon. Nothing was stinted.

Entertaining played an important part in peoples' lives during Jesus' time on earth. There are many stories of times when Jesus

and His friends shared meals together. I suppose the most important of these would be the Last Supper on the night before Jesus was hung on the cross to die.

We didn't eat out at all when we were children, but more and more people are getting together and celebrating in cafés and restaurants. Nice too for a change, but I never think it is quite as good as sitting around a table in someone's home. I hope that there will always be a place for gathering to share food together, in each others' homes. Family and friends are so important and I hope this Easter you will have the chance to gather in a family member's home to eat, relax and just be.

Wishing you all a Happy Easter and time with those you love.

Blessings, Annette Eggleston

Sunday 16th April 10 a.m. Service at St Aidan's
HARVEST THANKSGIVING
Followed by the PARISH A.G.M.

CHRISTCHURCH CITY MISSION - MEAT & FOOD DONATIONS (especially meat)

Please contact Harvey & Annette Eggleston on 3024 006 if you have donations

PARISH CONTACTS

Parish Priest - Rev Annette Eggleston

Email: harann000@gmail.com 3024 006

Church Warden – Pauline Hewson 3036 397

Church Warden, Secretary / Treasurer

- Marion Jacobson 027 3607 180

Email: marion.i.jacobson@gmail.com

Mt Somers Staveley Playcentre

This past month has been a busy one for us at Mt Somers Staveley Playcentre and it's now already the end of Term 1!

We had fun exploring Orana Park and seeing all the different animals, even feeding giraffes! We also had an excursion to the Enchanted Forest in Methven. What a wonderful walk for the children, so many things to see!

We visited the Tussock classroom at Mt Somers Springburn School, we have a few tamariki turning 5 this year so it's nice to see them feeling comfortable in what will be their new learning environment in the coming months.

Our Open Day was held on the 9th of March, it was great to meet some new families in the community! If you would like to come and see what Playcentre is all about but missed the open day that's ok, just pop in during one of our regular sessions! Tuesdays and Thursdays, 9-12, during school terms.

Our current Fairlie Pie fundraiser is running until the 28th of April, eight delicious flavours to choose from, \$7 a pie. Check out our Facebook page or contact a Playcentre mum for more information. We also have a raffle for a gorgeous Easter hamper running for just a couple more days. Tickets are \$2 each and can be purchased from a Playcentre mum or visit the Mt Somers General Store, but be quick!

With only a few days left of the term, we're looking forward to hunting for Easter eggs and then bring on Term 2! Our sessions will be back on Thursday, 27th April.



JACOB HOLDAWAY CONTRACTING

Drilling

Allen Custom Drill seed, fertiliser,
slug bait and insecticide at 125mm Row Spacings

Kverneland U Drill



For more information call Jacob to discuss your requirements

0274 225 464

www.jholdawaycontracting.com



Mushroom Compost For Sale

Mayfield Playcentre fundraiser for fencing and landscape improvements

Spent mushroom compost benefits:

- An excellent soil conditioner full of nutrients and organic matter.
- Suitable for most garden and vege plants.
- Improves moisture holding capacity of soil.
- High temperature steam sterilisation, ensures it is completely free of any weed seeds, pests or diseases.



\$10 per 25kg bag **OR** \$75 per cubic metre (trailer load)

Collection dates: Saturday 22nd April 9.30am until 12.30pm
Saturday 29th April 9.30am until 12.30pm

Collection location: Riverlea Farm, 100 Oakleys Road, Mayfield.

Order Form

Orders to be placed by **Sunday 16th April** to ensure supply. Limited quantity available.

Name	Phone	Number of 25kg bags \$10.00 per bag	Number of trailer loads (approx. 1 cubic metre) \$75.00 per M ³
Example: Michael Mushroom	021 234 567		2

To place an order, email this form to: mayfield@playcentre.org.nz or phone 027 622 7748 to place an order. Pre-payment to Mayfield Playcentre on receipt of order or pay by cash on the day.