

# ASHBURTON DISTRICT COUNCIL ROAD NETWORK MAINTENANCE AND OPERATIONS NEWSLETTER

ROAD0144 | Issue 7 | July 2021



**working for you**  
*manaaki whenua, manaaki tangata*

## Executive Summary

Tena Koutou Katoa,

Our teams and Trading Partners were in recovery mode fixing the network from the May Flood Event. Our efforts were spent fixing roads in the high country area, Mt Somers, Methven and roads that intersected with the Ashburton and Hinds river.

Special thanks to Harmer Earth Moving for their support and work on Double Hill Run Road with slip removal and scour repairs, and Tarbottons Land and Civil Ltd for their resources and assistance on the unsealed roads and bridge debris removal on the Sunshine bridges.

The flood recovery works were hampered by another heavy rainfall on the 10<sup>th</sup> & 11<sup>th</sup> July that caused wash outs on Redcliff's Bridge on Double Hill Run Road, and further damaged Hakatere Potts and Heron Road on the other side of the District.

Our cyclic crews are mostly back to contract works alongside side our Trading Partners with Delta spraying lichen, WasteCo street cleaning and Spraymarks completing roadmarking.

With the start of the new financial year, we are reviewing and confirming our 3 monthly rolling programmes with an overall annual plan to show when and where work is going to take place.

Nga mihi nui

Conrad Mclean

Contract Manager



## Highlight for the Month

Exciting times as we saw the arrival of the slide tipper deck truck. This is the last remaining truck to be added to our Ashburton fleet. This truck is assigned to our Minor Maintenance crew who will undertake culvert/drainage work and smaller scale works on the sealed/unsealed roads.

The key feature on this truck is the ability to track an excavator/roller on and off the deck without the need for ramps, which can be hazardous. This truck has the capacity to hold excavators up to 4.5t and 5t rollers.



# Upcoming Planned Works – August 21

## Overview

Flooding repair works will be ongoing for our Heavy Maintenance Crew doing a combination of sealed and unsealed works, Tarbottons repairing scouring and washouts on the unsealed network, and ACL assisting with sealed pavement repairs across the network. We also have our HEB Structures team lead by Adrian Blok repairing Pudding Hill Bridge, which was damaged in June with guardrail renewals, scour protection and bridge approach reinstatement

In July, weather did not allow us to seal flood remedial works, so please continue to be aware of roads that we have constructed but which are awaiting seal. If we get favourable temperatures to seal, we will, otherwise we will need to monitor and wait for permitting weather. Primary roads are – *Thompsons Track, Methven Chertsey Road, Tramway Road & Mayfield Valetta Road.*

## Summary of planned works

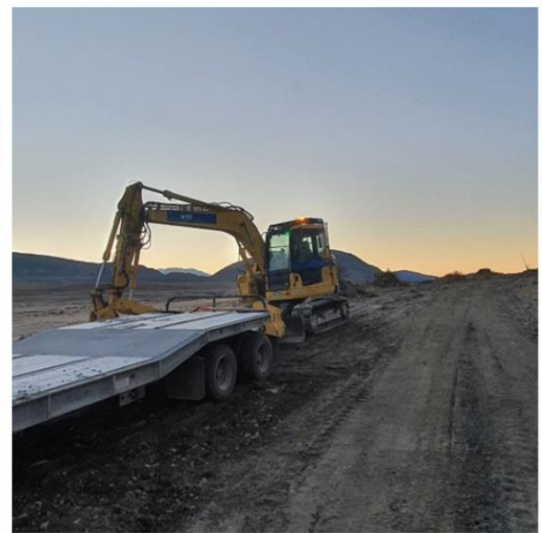
Unsealed Rehab Renewals | Sheates and Frasers Road

Watercutting | Racecourse Road, Ashburton Stavelly Road and Seafield Road

Bridge Repairs | Pudding Hill Bridge and Mt Harding Bridge

Cyclic Team | Routine works (potholes and signs), CRMs & minor flooding repairs works.

Flooding Repairs (washouts, scours, sealed pavement) | Multiple high priority areas covering Ashburton Forks, Valetta, Mount Somers, Methven, Stavelly.



*Hans and Hemi – Minor Maintenance Crew happy with their new Slide Tipper Deck truck, that can allow them to transport their excavator to and from sites.*

## Contact Us

Phone - 0800 HEB CAN

Email - [ashburtonDC@heb.co.nz](mailto:ashburtonDC@heb.co.nz)

Address – 153 Tarbotton Road, Tinwald

Web - [www.heb.co.nz](http://www.heb.co.nz)

**Our Team  
Working for You**  
Trading Partners



Tarbotton Land & Civil

