

Timeline Agreed for Western Ward By-Election

ASHBURTON, 20 January 2023 - A timeline for the Ashburton District Council Western Ward by-election has been agreed to with nominations for candidates set to open from Thursday 16 February and voting to start in late April if more than one eligible candidate stands.

The by-election will fill the seat left vacant by Councillor Rodger Letham, who passed away in December, shortly after being elected for a second term. Council Chief Executive, Hamish Riach, said Cr Letham was highly respected amongst both colleagues and constituents, and the community now had the significant task of nominating and electing a candidate who could bring the same dedication and enthusiasm to the Council table.

"The dates won't be official until the formal Notice of Election is issued in February; however, we hope releasing this early timeline will get people thinking about who might make a good candidate or to consider standing themselves," said Mr Riach.

Under the planned timeline, a Notice of Election will be issued by the District's Electoral Officer on 13 February. Nominations for candidates will be open from 16 February until 16 March, and if more than one eligible nomination is received, postal voting will take place between 20 April and noon on Friday 12 May.

Mr Riach says the timing will meet statutory timeframes while avoiding a clash with the busy Easter period when many people would be travelling.

"We want our residents to have the best possible opportunity to make a considered choice about who will represent them," said Mr Riach.

Those wishing to stand will need to be nominated by two electors who live inside the ward, however the candidate themselves can live anywhere in the country as long as they're on the parliamentary electoral roll. Riach says more information about standing in the by-election will be made available in February.

It's expected that there will be strong interest amongst residents in the Western Ward - 53% of votes in the ward were returned during October's local elections, the highest in the Ashburton District and well above the national average.

The successful candidate will join Deputy Mayor Liz McMillan in representing the Western Ward on Council and become a member of the Methven Community Board. Mr Riach encouraged those who were new to the area, had moved recently or didn't receive voting papers during the October elections to check their enrolment details were up to date at vote.nz



*Councillor Rodger Letham,
who passed away in December*

Mayfield Hall And Domain

The Venturers have gone and the grounds are back to normal, almost. The kids had a great time and loved being in Mayfield. Mayfield loved having them, well most of them!

Four people complained on Facebook I'm told, compare that with the 700 plus who enjoyed their stay. No contest!

A survey of the shops in the village shows that they spent upwards of \$ 30,000 while they were here. The cold wet spell prompted the Aussies to purchase warmer clothing; over half were from Australia. At the end of March the Ashburton District Council will be holding the Tri-annual meeting of the board. This is a chance for new blood to come on board and keep our hall and domain going forward.

I'm like Jacinda, after three terms, run out of gas! The committee has achieved most of what was on my list. I'm sure some new faces can bring forward some new ideas that will improve the great asset that we have in the village.

Don't be shy, come along to the meeting lend your support. Look what the new team at the pool have achieved.

Barry Austin, Retiring Chairman.

PS As Jill has moved to town, a new secretary is needed.

An update from the Staveley Ice Rink

Welcome 2023! We are making our New Year resolution to do more Ice Skating & Curling in 2023.

Rink Update:

Below is a sneak peek on what has been happening at the rink. We are getting the nib wall and channel for the piping installed. Once this is complete, we will be onto the base.

How exciting is that!!

Some figures to date: We have had over 200 donations from \$5 to \$150,000 over the last 17 months, our first donation to kick the project off was "Kristine" on Give a Little for \$10.

Now we have over \$930,000. Every little bit really does help. We are still looking for funding and are close... but still need a bit between now and June. Below is a quick and easy way to donate a load of pipe and get that 33% tax back or you can pop over to our give-a-little page <https://givealittle.co.nz/.../staveley-ice-rink...>

We have had to cancel our planned Car rally and will try later in the year when we have a few more volunteers to help.

Clare Harden

VICTORY LIME
NOT ALL LIME IS CREATED EQUAL

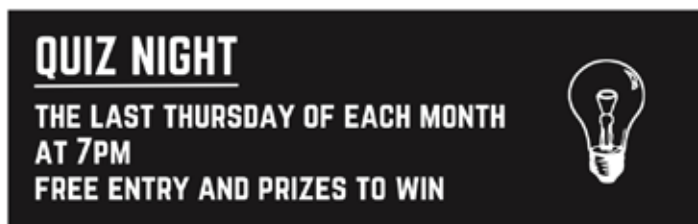
Talk to us today about your requirements
Contact us on:

0800 303 980

admin@palmerresources.co.nz

Peaches Rd, Mt Somers, RD 1, Ashburton 7771

www.vlime.co.nz



WWW.PANTHERSROCK.COM

@PANTHERSROCKMAYFIELD

New Season Peastraw FOR SALE

Conventional squares - \$7.50 per bale.
Available in 21 bale bundles only.

Medium squares - \$45.00 per bale.

Available now.

Pick up anytime or please enquire about
delivery options.

All prices exclude GST.

Contact James Carr to order:

Phone: 027 202 6110

Email: james.carr@stradbrookfarms.co.nz



Neighbourhood Support



Report – Nor’Wester

I hope everyone had a good Xmas, a Happy New Year and a good break. Jeremy’s prophecy of it being an interesting year has already come to fruition with a change in leadership! Interesting times ahead.

Happy to say that there are no reported crimes for the foothills community over December. Being aware of who is in your community, local links and being aware of who is around you go a long way towards safety and prevention. This applies to local farms with tenants especially during the harvest period when there is a lot more on farm activity.

Fire Safety during this busy time includes ensuring harvester operators are aware of the conditions outside their air-conditioned cabs, paying special attention to checking your machinery’s bearings and moving parts and carrying appropriate fire extinguishers, shovels, or knapsack sprayers during high-fire danger periods.

We continue to work with Civil Defence in establishing communication and connectivity within communities. Rural communities will already have the advantage of knowing many of their neighbours, but beyond this is the information aspect. In a major event it is projected that 72 hours could be the lead in time before emergency services get to an area in need. Skills, needs and resources provide a community with the knowledge needed to cope and stay safe during this time. Completing a form, registering with our database and receiving an up to date sheet with a list of your neighbours and this information can prove critical during these times. Sign up to or join Neighbourhood Support and be aware of your neighbours and their abilities. Contact Sue 0272961006 or online: <https://www.neighbourhoodsupport.co.nz/join-now>

Be safe!

Sue Abel

Neighbourhood Support Co-ordinator

Bronie joins the Hospice team

Hospice Mid Canterbury recently welcomed Bronie McMurtrie to the team. She brings a wealth of experience to the role of Activities Co-ordinator, having worked in similar positions in the aged care sector. Hospice clients visiting the base are already benefitting from Bronie's enthusiasm and new ideas with such activities as singing therapy, art therapy and Housie/Bingo being added to the activities schedule. Along with the well-established exercise therapy, chair yoga, craft and pamper sessions, the new additions have been chosen to suit a wide range of interests. Bronie is very keen to provide clients with plenty of opportunities for social interaction and enjoyment and has plenty of new ideas for activities in 2023.

If you or someone you care about has a life limiting illness and would like our support, contact us on 307 8387, or 027 227 8387 or email support@hospicemc.nz.

See also our website www.hospicemc.nz and look for Hospice Mid Canterbury on our facebook and Instagram pages.



CENTRAL CANTERBURY
FARMING FOR PROFIT FIELD DAY



The only constant is change

Exploring opportunities at Mt Somers Station

1.00pm Tuesday 21 February

Mt Somers Station – 281 Peaches Rd, Mount Somers

Come along for the day at Mt Somers Station with David and Kate Acland. Let's discuss the challenges and opportunities faced on farm, along with the operational processes David and Kate have adopted for future prosperity.

Topics include wintering systems, family succession, sheep production systems, future market drivers and vegetation on farm.

Speakers: Chris Mulvaney (Stockcare), Ryan McArthur (Silver Fern Farms), Thomas Forbes (Forest Management), Peter McKnight (PGGW).

To register: Please visit beeflambnz.com/events and search for this event. For more information contact Courtenay on **027 281 1341** or courtenay.chenery@beeflambnz.com

This day is proudly supported by Silver Fern Farms and PGG Wrightson.

WWW.BEEFLAMBNZ.COM
0800 BEEFLAMB (0800 233 352)

FEE ENSOR AND TEAM

Residential
Lifestyle
Rural



Welcome to 2023

If you are considering moving this year, please get in touch with our team.

Fee Ensor | 021 705 014
fee.ensor@bayleys.co.nz

Emma Phillips | 027 4833 110
emma.phillips@bayleys.co.nz

feeensor.co.nz

**FEE ENSOR
AND TEAM**

WHALAN AND PARTNERS LTD, BAYLEYS, LICENSED UNDER THE REA ACT 2008

BAYLEYS

ALTOGETHER BETTER

Residential / Commercial / Rural / Property Services

Rural Driver Licensing Scheme

A new year brings new beginnings. What will your new beginning be this year?

New year is the time for New Year's resolutions. Did you make one? If so, how are you going with your resolution? Mine was to help more people get out on the road this year, and already we have got off to a great start with five successful tests and more to come. We are having a lot of interest in our next road code course, and we haven't even advertised it yet. Word of mouth and referrals from past students are fantastic because it shows that our programme is making an impact on people's lives in more ways than one. It's not only about the driving, it's also about making social connections, preventing isolation leading to better wellbeing in our rural community, and giving people independence which opens doors to employment. It's about increasing self-confidence and self-esteem. And best of all is feeling more settled in their new life in New Zealand.

Over the past year, we have achieved 24 learners licenses and 42 restricted / full tests. That's 42 people now enjoying their independence. That's 42 safe new drivers on our roads. And 42 people whose life is enriched by having the opportunity to learn to drive by our amazing volunteer driving mentors. While it doesn't sound like big numbers, we are a small programme which starts at the very beginning, teaching the road code and then teaching our people to drive. And it all takes time. Especially when isolation and language is in the mix. We are proud of what we do, and the successes we have. We can't do it without our amazing volunteers and our generous funders. So thank you so much to all of them. We appreciate your generosity and skills. It takes a special person to teach someone to drive, and we are so lucky to have you choosing our programme to volunteer with.

If you would like to be part of this amazing programme, either as a student, driving mentor or to volunteer in other ways, we would love to hear from you. Please contact Wendy Hewitt on 027 611 3301 or wendy.hewitt@safer.org.nz

We are also on Facebook, just search for the Mid Canterbury Rural Driver Licensing Scheme.

The Mid Canterbury Rural Driver Licensing Scheme is proudly sponsored by MPI, Waka Kotahi, The Lotteries Commission, Advance Ashburton Community Foundation, The Ashburton District Council, Braided Rivers Community Trust, The Lion Foundation, COGs, Community Trust Mid & South Canterbury and The Mid Canterbury Rural Support Trust.

Wendy Hewitt
Rural Licensing
Co-Ordinator
Safer Mid Canterbury
44 Cass Street,
Ashburton 7700
Ph: 027 611 3301
wendy.hewitt@safer.org.nz

Office hours -
Monday to Friday
8.30 am to 4.30 pm

Aporosa Waqa
- Full license



Safer Mid Canterbury
Hakatere Haumaru
Together we're safer • Me uru kahikatea

Struggling with lame COWS?



Over 20,000 cows through our crushes last season.

Three mobile hydraulic crushes.

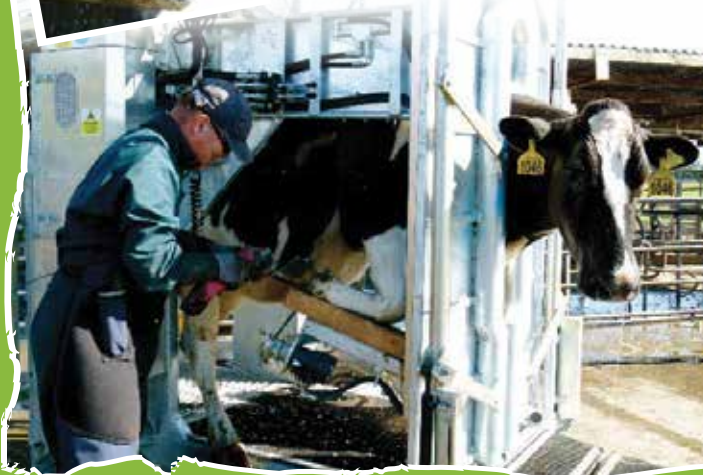
BEST PRICES FOR:

Top quality knives

Claw blocks

Hoof rasps and cutters

Hoof trimming crushes



Lame cows treated rapidly & effectively

Hoof trimming to PREVENT lameness

Training in hoof care techniques



0800 4 COWCARE

0800 426922

info@cowcare.co.nz

FREE DIGITAL TRAINING

STARTING IN FEBRUARY



13—18 YEARS

Create a CV & Cover Letter

Would you like help applying for jobs in a professional manner?

Dates: 21 Feb | 28 Feb

Time: Tuesdays, 3.30pm—5.30pm

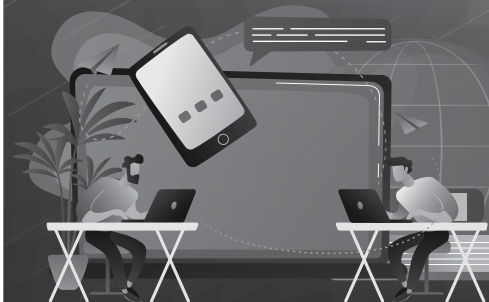
ADULTS

Apply & Search for Jobs

Looking for a new job this year? This course will set you up for success!

Dates: 8 Feb & 15 Feb | 22 Feb & 1 Mar

Time: Wednesdays, 10am—12pm



BOOK NOW!

View all our courses at:
ashburtondc.govt.nz/digital

Community Grants & Funding

Apply now!

Each year, Ashburton District Council provides funding to dozens of community groups and projects that make Mid Canterbury a great place to live.

From community libraries and pools, to cultural events and native planting - grants are available for a wide range of activities.

We're now seeking applications for the next round of funding.

So, if you have project or group that would benefit, apply now!

Applications open from 1 February until 28 February.

- **Community Project Grant**

Funding for projects that maintain or enhance residents' quality of life.

- **Community Agency Grant**

Helping community organisations with their operational costs.

- **Community Infrastructure Grant**

Support for the development and maintenance of memorial and community halls, and reserve board infrastructure.

- **Community Events Grant**

Funding for new community events or building the capacity of existing events.

- **School Holiday Programme Grant**

Support for school holiday programmes that cater for children aged 5-14 years.

- **Heritage Grant**

Support for specialised maintenance that preserves or restores the heritage state of a building or heritage item.

- **Community Library Grant**

Support for independently operated community libraries with the purchase of new reading material.

- **Biodiversity Grant**

Funding for projects that aim to protect, maintain or restore biodiversity.



Find out more ashburtondc.govt.nz/grants
grants@adc.govt.nz | (03) 307 9646



The Old Post Office Library

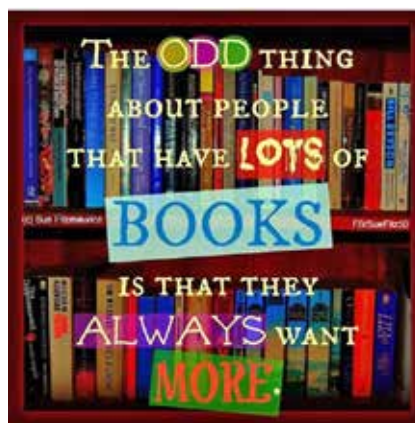


Hello to all readers and a very Happy New Year to you all. We are nearly through January already so the greeting is a little late but as this is the first newsletter for the year, the message still applies. We hope to continue to bring exciting and interesting books to the community again this year, trying to find something for everyone. If you have any special requests and think that others would be interested as well, please let us know.

Currently, there are two books on order and should be in the library in the next couple of weeks..... 'Spare' by you know who. It seems all libraries have this on their shelves, so I thought we should too. What else can I say about it?? We have been dribbled excerpts from the epistle and seen the interviews so maybe this will clarify any matters if you are still in doubt. I'm just very pleased the Queen is not here to see it published and horrors... even read it!!! As if she would.....!

The other book on order is another beautifully presented high country book on the Awarua. I managed to read a copy over the Christmas break and it really is a great interesting read. I thought because it is slightly out of our area, I wouldn't find it so, but because it is about the farming world, there is plenty of interest throughout. Highly recommended.

Other books joining the shelves this month are:



'The Lindbergh Nanny' by Mariah Fredericks.

This story has different versions, based on fact. In 1932, Charles and Anne Morrow Lindbergh were the most celebrated couple in America and famous throughout the world. On March 1st, their twenty-month old son was kidnapped and two months later was found dead in woods not far from his home. A man was convicted and executed for the crime, but many believe there were others involved who were never identified or held accountable. The nanny was the first person to discover the baby missing and the last to see him. These are the facts.

This is a gripping and elegant tale and well worth a read.

'My Policeman' by Bethan Roberts.

This has now been made into a movie.... Or maybe the movie came first?? Whatever..... a real holiday read with quite a message. A love story with a difference. It is described on the back of the book as 'tense, romantic, smart', and 'a humane and evocative portrait'. I recommend it.

'The Half Life of Valery K' by Natasha Pulley.

I have not read this, it was given to me at Christmas but I have such a pile of books to read I thought I would lend it on to the library and give someone else the opportunity to read it first. Set in 1963 in Siberian gulag, a former nuclear specialist has worked out what it takes to survive such a predicament, but all that changes one day when he is taken to an unnamed town deep in a forest. Here he is expected to serve out his prison sentence by studying the effects of radiation on local animals, but discovers other secrets as well. If he keeps looking for answers will he live to survive his sentence?? Quoted to be 'Exquisite.... An illuminating and immersive historical tale'.

Some housekeeping matters.....we are having trouble with people using the area of the outside shelves as a handy dumping place for tatty books and tapes etc. Please don't do this.... We really appreciate good pre-read books in very tidy condition being left, we want these shelves to be an extension of our library of which we all can be very proud. It really lets the side down when tatty and old fashioned childrens books are piled up with video tapes which are now obsolete. We have to deal with getting rid of these.

Near new children's books are great otherwise please dispose of them somewhere else.

A sincere thanks to people who donate their books to us and help to keep those shelves full. They are so well used, particularly at this time of the year with travellers passing through. I wish we could open the library more often. I have seen people peering through the door and windows trying to see what is inside, so if anyone has the time or inclination, please feel free to open the library up anytime and do an extra duty. It's amazing who you might meet!! And if no one comes through the door, you will have spent a very pleasant quiet time just browsing. There are a wonderful set of scrapbooks available to read, collated and donated by Joyce Grieve: mostly newspaper cuttings of local interest. They will keep you occupied for hours.

Happy reading!!!! AC.

Public Notice Mayfield Reserve & Hall Board

Mayfield Reserve & Hall Board Triennial Meeting

The purpose of the meeting is to elect up to seven residents to fill the vacancies on the Board.

The Board will meet immediately following the Triennial Meeting and appoint members to the positions of Chairman, Secretary and Treasurer.

Date: **Tuesday 28 March 2023**

time: **7:30pm**

Venue: **Mayfield Hall**

ALL RESIDENTS WELCOME.

Hamish Riach

Chief Executive Officer
Ashburton District Council



ashburtondc.govt.nz

Walk Woolshed Creek Hut Rhyolite Ridge 25th January

The weather was great for this walk. Some ladies walk to the hut via Blackburn Coal Miners Track while most ladies walked to hut via Rhyolite Ridge.

So nice to have members from Timaru walking group.



Photos supplied
by Sanae
Hydes

Junior Tennis Coach Required

We have a group of keen and enthusiastic children aged between 5-11 who are keen to learn how to play tennis at the Ruapuna Domain Courts after school one afternoon per week for Term 1.

You will be remunerated for your time and we are reasonably flexible with days/times to suit.

If you, or anyone you know, could be interested or would like to discuss the details please contact

Rebecca Taylor on 0276321303.

Free Learners Licence Course

The Mid Canterbury Rural Driver Licensing Scheme are running another free Road Code Course beginning early March.

When: Tuesday 11am – 1pm for 9 weeks.

Where: Ashburton

Who: Adults living in Rural Mid Canterbury.

We can help you with transport to class and child care.

On gaining a learners licence we will begin working towards a restricted licence or to convert your international licence. Spaces are limited so get in quick.

Visa holders are most welcome. Sorry, the programme is not open to school students.

We are also looking for volunteer driving mentors to help our students with their driving. They supply the car and we supply training, resources and support.

To register, please contact

Wendy Hewitt, Rural Licensing Coordinator

Phone 027 611 3301

wendy.hewitt@safer.org.nz



*For a
first Rate job
call us*

Rates
PLUMBING & DRAINLAYING
CRAFTSMAN PLUMBER / REGISTERED DRAINLAYER

Phone: 03 693-8512 • Mobile: 0274 373 158
33 South Terrace, Geraldine

- NEW HOUSING
- REPAIRS & MAINTENANCE
- ROOF REPAIRS
- RENOVATIONS



- DRAIN CLEANING
- LOGFIRE INSTALLATIONS
- CONCRETE CORING
- BACKFLOW TESTING

2023 Classes will commence Wednesday 8th February

Steady As You Go (SAYGO)

You could save yourself from a fall by attending SAYGO classes.

SAYGO improves:

Balance & leg strength • Flexibility • General fitness & well-being

- Falls are the most common cause of injury in older people
- One third of people over 65 fall each year
- Half of people over 80 fall each year
- Designed for men and women

• Falls are not a natural part of ageing and are almost always associated with weakened leg muscles and poor balance

So come and join us for an hour. Classes every Wednesday, Staveley Hall 2pm. For enquiries, phone Annette Syme 3030 803

HEYBROOK BUILDING LTD



New Builds

Lifestyle sheds

Alterations

Renovations

Farm Buildings

General Maintenance

Phone Thamir for all your building needs

022 354 6524

heybrookbuilding@gmail.com



Mayfield Playcentre

Mayfield Playcentre is very excited to start our new year this week!

We are happily reflecting on an incredible 2022 with many accomplishments we must thank our community for.

We have grown our centre with many new, Families and Tamariki.

We have an everchanging demographic and it's lovely to see relationships build, grow and change between the different ages of our children. We pride ourselves with providing an environment that allows children of all ages to learn through their play and this is often evident through messy play!!!

We have worked hard on improving our centre and have recently given our space an overhaul with new furniture to allow more open ended play. So far our new shelving has been a Supermarket, Hospital, Cafe and Office.

With the last of our funds coming through from The Homegrown Garden Tour we have brought our last few pieces from our wish list and are looking forward to sharing these stories with you!

The Homegrown Garden Tour was one of our big success stories of 2022. Although ticket sales were down on years before we successfully raised enough money to keep our centre fill with fabulous resources. So thank you again to all those who brought tickets without these funds we wouldn't have the vibrant centre for our children.

We have sessions Monday, Tuesdays and Wednesdays 9-12 throughout the school terms and welcome any visitors to come check out what we are up to!



Ashburton Crane Hire Ltd.

24hr Service

0274 192 5554

ashburtoncranes2015@gmail.com

*"Reaching
New Heights"*





Windrowing & Baling Services

- 4x3 & 3x3 Square bales
- Round bales ■ Mow, mow-condition
- Tedder, rake, bale, tube & individually wrap & cart

Use your Ruralco card
for a discount



STRAW & BALEAGE SUPPLY - Contact us for **CUSTOMISED DEALS** for straw delivered at harvest time so you can get the best quality straw at very competitive prices.



Ph **Donald** 027 279 8704 or **Robert** 027 304 8837
www.donaldlovewindrowing.co.nz



Cultivation & Forage Harvesting Services

- Reversible ploughing, sumo trio rip disc roll,
- 6m Allen Drill, direct & conventional, seed & fert
- Complete Forage harvesting service - mow, rake chop, cart, stack, weighbridge



Use your Ruralco card
for a discount



Ph **Robert Love**
027 304 8837

Cultivating practical farm planning solutions

- FARM ENVIRONMENT PLANNING
- NUTRIENT BUDGETING
- SUPPORT WITH ON FARM COMPLIANCE



CG Ag
Practical farm planning



Talk to Chris Gibbs P 021 317 669 E chris@cgag.nz

www.cgag.nz



A COMMENT:

A new year and a new start, there is change, some expected and some a surprise, A change of prime minister was hardly expected by the majority, and it happened. Know doubt we can expect change, change can be good, and it can be bad. We live in a relatively quiet part of the world, there is considerable conflict and turmoil in various parts of the world, and there always has been. Somehow the world or most of it survives despite itself.

Under the heading of Presbyterian News, I included a poem from Peter Cape. This man became well known. Throughout the 50's and 60's. from what I'm able to learn he was well educated with various university degrees, became an Anglican vicar in time departed that calling moved to Nelson area where he mixed with alternate type people in the art of pottery and art and moved into radio announcing and the writing of poetry and song, perhaps more ballad type of productions. I mentioned him to a number of people but got blank replies, If one tuned into local radio in the 50,s and 60,s I think you just may remember this man, his lyrics were light, humorous and clever, I looked up a few of his many songs and found there were many I list here a few: Down the hall on Saturday night -- Talking dog -- Rainbird in the tea-tree -- Taumata... -- Inter-Island Steamer Express -- Taumarunui -- She'll be right -- Fetch 'em on -- Gumdigger -- The Okaihau Express -- Coffee bar blues. Possibly 'Down the Hall on Saturday Night' was the most popular, I well remember 'The Inter Island Steamer



**24 HOUR ON-CALL
EMERGENCY SERVICES
Phone: (03) 693 9060**

Servicing Mayfield, Mt Somers, Hinds and South Canterbury.

Independent and locally owned.
Large and small animals.
Delivery service for all farm supplies.

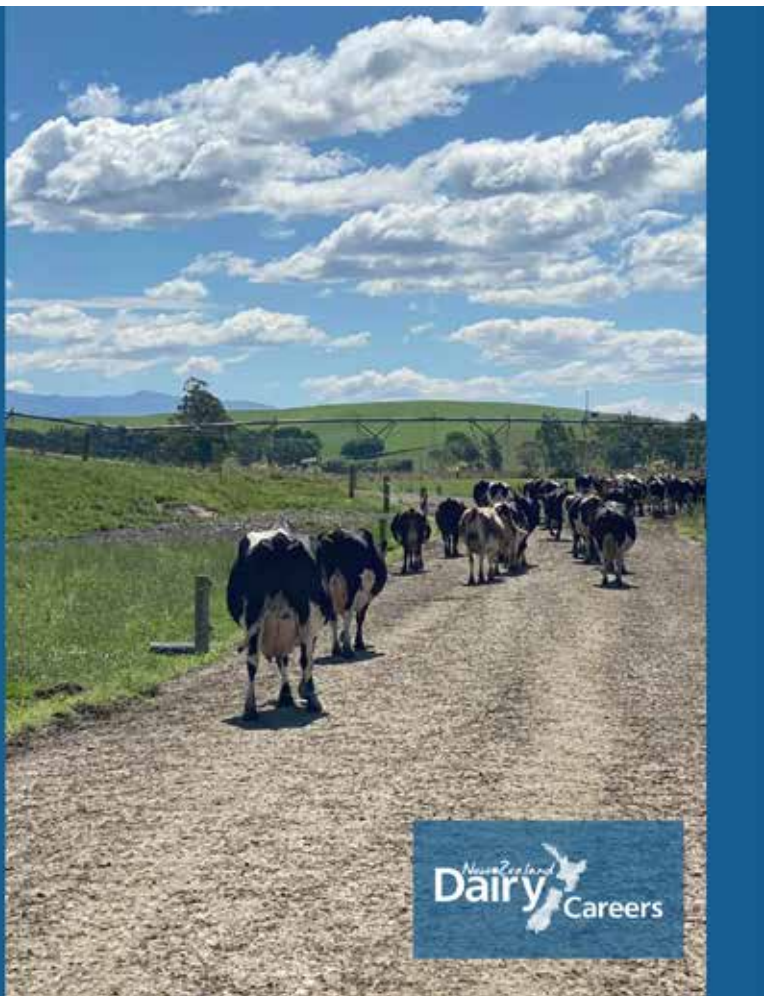
**Cnr Woodbury / Main North Rds, GERALDINE
Phone 03 6939060, email
www.gatewayvets.co.nz**

ARE YOU ARE LOOKING FOR STAFF?

We have career changers,
recent trainees, dairy
assistants and 2IC's who are
ready to move their career to
the next stage.

**CALL US
03 971 5564**

or visit us online
nzdairycareers.co.nz



Express' 'Okaihau Express' And 'Taumata ----- This the longest place name in the world, I certainly wouldn't attempt to pronounce this name but Peter Cape had a song with the full name drawn out.

That is all I have on Peter Cape for now his life ended 1979 at age 53. He is listed as being a singer, song writer, writer, and radio producer.

I started to write on Ukraine, but the question to dense and would require some serious research, I did learn a little of this vast land and the problems the neighbour to the east has created. Ukraine is the second largest country in Europe second only to Russia. It has good natural resources coal, gas, oil, and a very large area of rich fertile land. Since being free from the Soviet Union it has prospered under self-rule. Has an area of 603,628 sq Km and a population 41 million excluding the Crimea, the President is elected for a five-year term.

By comparison NZ population 5.123 million land area 268 sq km. Ukraine is or was a large exporter of grain, possible the largest exporter on a world scale.

It is very sad that such a country which was ticking along in a comfortable manner should be so viciously attacked by their close neighbour. Their President Volodymyr Zelenskyy is determined to drive the Russian forces from his land, we can but wish him well, he has shown great leadership and determination and has gathered very strong support from other major powers, how it will end only time will tell. For now, it places the world in a very dangerous position. It surely must be tempting for Ukraine to attack Russia; one would hope this would not happen as that could then escalate the situation to a status of world war. But for now, one can only condemn Russia for what appears to us a senseless and provocative attack, Zelenskyy will certainly and rightly so do all that can be done to drive this enemy from the soil of Ukraine.

For now, have a great year and live life:

Cheers Denis

Letter to the Editor

Not sure about the rest of the community but I am disappointed to see how many people in the village mow their lawns spraying grass on to the road. Not only is this dangerous for cyclists and motorbikes as it gets slippery, but it also makes our beautiful village look shabby as if we take no pride in how it looks. Maybe I'm being fussy.

Cheers Leonie

Rifleman Pest Control

FARMS WANTED!!!!!!!!!!!!

Providing a **free service** from Mayfield to Methven that's carried out by a local farmer.

References available.

All carcasses utilised.

I collect all animals shot and also provide other services like possum trapping and larger game animal control.

Call Laurie Aitken
027 3143 491



2-3 hares eat the equivalent of 1 stock unit and reproduce up to 10 young each year. Night shooting is the most effective method of control.



- STOCK
- BULK & GENERAL FREIGHT
- BLOWER TRUCK
- FERTILISER SPREADING
- PUBLIC WEIGHBRIDGE
- RAVENSDOWN STORE MAYFIELD



You Call, We Haul
Locally owned and operated

Ph: (03) 303 6102 Mayfield

Ph: 0800 MTRANS (687267)

Email: office@mtrans.nz

74 MAYFIELD KLONDYKE ROAD, MAYFIELD, ASHBURTON 7778

Book of the Month – Mt Somers Library

Title: 'The Remarkable Odyssey of Angela Merkel'

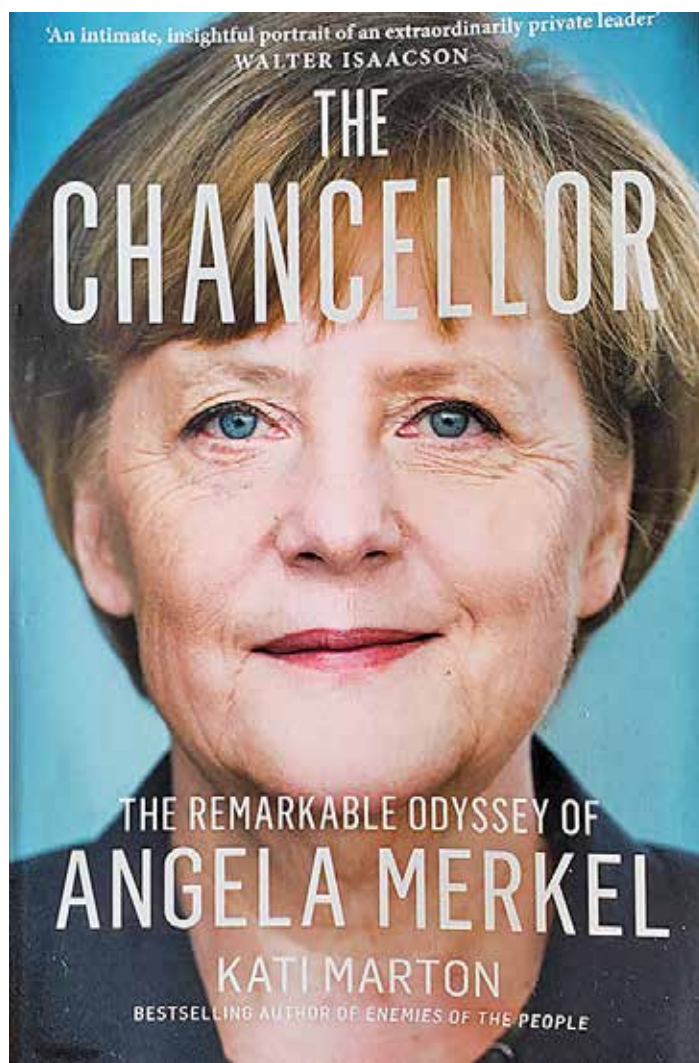
Author: Kati Marton

Publication year: 2021

A review by Elles Smallegoor

Somebody kindly donated Kati Marton's biography 'The Remarkable Odyssey of Angela Merkel' to the library and I took it home with me as I have always been fascinated by Germany's quiet, longstanding Chancellor. She served the country for sixteen years, had enormous influence on the global geo-political stage but, on the whole, she managed to live in relative obscurity. Reading Marton's book, it turns out that fiercely protecting one's privacy despite being in public service has always been part of the scientist-turned-politician's style of governing. It certainly has been a challenge for Marton the biographer; this was not a collaborative project between the two women. All information in the book is based on endless research and conversations with others who at some stage were in close proximity to Merkel: old friends, fellow students, ex-colleagues, former presidents and more. Merkel's life journey so far has been remarkable indeed.

Born in 1950s Hamburg as Angela Kasner, Merkel was the eldest daughter of Horst and Herlind, a pastor and English teacher respectively. As Marton indicates, it was the father's desire to always put the church before anything else that defined Angela's younger years: "perhaps none of Horst Kasner's actions was more influential on Angela's early development than his decision to leave West-Germany's relative security to face the dangers and volatility of the Soviet-occupied East." (p. 2). Duty called and Christians living under a repressive government needed more help than ever. As a result, Angela spent four decades of her life under Communist rule and surveillance, always smartly evading direct confrontation but never endorsing its ideology. She would express her views through small gestures, such as being the first at school to wear jeans, a clear symbol of the West. For years, she had a successful academic career. However, when the Berlin



wall came down and freedom called, it was time to fly high and go into politics. These early chapters about East Germany are incredibly insightful, demonstrating clearly how political history can shape the life of the individual.

The following chapters trace Merkel's life in politics, starting out as Helmut Kohl's protegee or 'Mädchen' ('girl') and then truly taking the reins by becoming the first female Chancellor of Germany and, ultimately, unofficial leader of the European

Union. Some chapters are specifically devoted to her relationship to other world leaders, such as George W. Bush, Barack Obama, Donald Trump, Emmanuel Macron and Vladimir Putin. In light of Russia's recent invasion of Ukraine, the chapters on Putin are especially timely – Merkel and Putin have some shared history and both speak each other's language fluently.

Kati Marton rightly admires Merkel for her ability to cope and adjust in challenging circumstances. Through team work (she had a few

Contact Ben Walls for all your
contracting needs

027 436 9133

ben.walls@quigleycontracting.co.nz

Quigley
CONTRACTING



www.quigleycontracting.co.nz



loyal longstanding female aides while in office), shrewd political management and diligent fact-gathering the Chancellor was able to perform and deliver for years on end in what was still largely a man's world. She delivered socio-economic stability and security for the majority of the German people who eventually called her the nation's 'Mutti' ('mother'). She kept her personal life incredibly private against all odds. Above all, she still had a good time while in the job. While Merkel may seem rather dull, the book reveals her as an ever-curious, surprisingly humorous, art, music and soccer-loving woman who likes to stay up late with a few drinks and have fun with friends.

It is to Marton's credit that she has managed to gather enough interesting information about a fairly enigmatic person and has presented the material in such a way that it celebrates this person's personal and professional achievements. But despite its persuading power, the book also needs to be read with some healthy realism. It is deftly written so as to easily sweep you away into an idealised world in which Merkel can do very little wrong. While Marton occasionally criticises Merkel for certain actions and reveals the latter's weaknesses (and therefore humanity), she also leaves a lot of material out that would complicate the praise (most notably EU and German domestic politics). It does not take much to imagine 'The Remarkable Odyssey of Angela Merkel' as a very wordy feminist Marvel Comics book, in which Merkel is some sort of Democratic Wonderwoman who – together with her sidekicks – shows all the evil men in the world how to rule the world properly. If you can look past this caricature and appreciate that liberal democracy could use some propping up these days, as Marton's underlying message seems to be, come and get it from the library and immerse yourself into a good read.

GORSE SPRAYING



ROSS BROWN CONTRACTING LTD
Registered Chemical Applicator
with 30 years experience

0274819190

www.gorsespraying.co.nz

email: gorseman@hotmail.com



JACKO


CONTRACTING & CONSULTING LTD



- Tracks & Lanes
- Dairy Lane Capping
- Tree Removal
- Logging/Forestry Work
- Farm Conversions
- Water Storage
- Dairy Shed Foundations
- Underpasses
- Irrigation Mainline Installation
- Project Management
- Commercial/Domestic Building Foundations
- Driveways

Free Quotes and Great Advice. Call Today!

0275 099 710

info@jackocontracting.co.nz Find us on Facebook 

**COMPUTERS
FIXED
FAST
FIRST TIME**



Rural CO

03 308 3400
www.mypc.nz
144 Moore Street, Ashburton

**Computing
Solutions**

ANTIWRINKLE
DERMAL FILLER
PROFHILO®

CosMedic

17 YEARS + NURSING EXPERIENCE
Local
COSMETIC
NURSE

Book your FREE 15 minute consult today:
022 659 3995 / info@cosmedic.co.nz / cosmedic.co.nz

Facebook icon Instagram icon

Painter Available



Spruce up and protect your property with a coat of paint!

Interiors, exteriors, roofs and weatherboards.

Pressure washing, airless spraying, and a first-rate finish.

Friendly, professional service, good rates, excellent local references.

Call Wolffie for a free quote. Distance no problem.

Ph 0279 624 841 or 03 693 9803

Backbone of our economy

Jo Luxton, MP for Rangitata



Countries around the world, including many of our key trading partners, are facing challenging economic conditions right now. While the global outlook remains uncertain, there is real reason for New Zealand to be optimistic about the future – and our primary sector is at the heart of that.

Through resilience and innovation, primary industry exports hit a record \$53 billion last year and economic prospects for the sector continue to look incredibly bright, with export revenue forecast to reach over \$56 billion by 2026.

This strong performance is a testament to the sector's ability to adapt in a changing world. Our farmers, growers, fishers and foresters should be immensely proud of their efforts – your hard work has kept us all out of harder times.

To back the primary sector, our Government is continuing to pursue high quality trade agreements that diversify New Zealand's trade relationships. This includes unlocking access to some of the world's biggest and most lucrative markets, which will see farmers, growers and exporters get even greater returns for their hard work.

Since taking office, we've concluded four free trade agreements, including with the United Kingdom and European Union, and we've upgraded three existing free trade agreements. Thanks to this work, over 73% of New Zealand's global exports are now covered by a free trade agreement.

We know that consumers around the world are increasingly demanding higher levels of sustainability in the products they buy. To stay ahead of the international curve, we're working alongside the industry to position New Zealand's food and fibre sector as the best in the world, and the best for the world.

We're partnering with industry to integrate farm planning to streamline compliance, reduce costs, and demonstrate sustainability credentials to our markets. We've also made significant investments in the future of farming, including through the Sustainable Food and Fibre Futures Fund, and we're making good progress on our plan to increase New Zealand's trading opportunities.

Farmers and growers, like those here in the Ashburton district, are the backbone of our economy and our goal is to support them to grow exports, reduce emissions, and maintain our country's competitive edge internationally.

It's a privilege for me to chair the Primary Production Select Committee at Parliament. I'm proud of the work our Government is doing to support the food and fibre sector, but more importantly, I'm proud of our primary industries. You keep us fed, keep export revenue coming in, and keep many in the Rangitata electorate in jobs. Thank you.

"Do it Once, Do it Right"

Over 30 years experience servicing and supporting the local community

Earthworks

- Any type of Earthmoving



Laneways

- Lime capping



Ploughing

- Cable + Waterpipe Installation



Directional Drilling

- Trenchless Technology



Utility Detection Services

- Find it first



Demolition

- Residential and Commercial



Call us today for an obligation free quote.

GDC

Greg Donaldson Contracting Ltd



Office 308 8479 Mob 027 433 8003

Free Phone 0800 432 583 (GDC LTD)

Web www.gdc.net.nz Email office@gdcgroup.nz

2 Fords Road, Ashburton • 106 Hilton Highway, Timaru

Cross Contracting Ltd

Experienced operators with over
45 years local knowledge



For all your digging requirements

- Stock water race cleaning
- Irrigation race cleaning
- Disposable pits
- Soak Pit • Trenches
- Gorse fence & shelter belt removal
- Irrigation mainline trenching
- Shingle screening bucket
- Tip truck hire
- Tree stump removal & root raking
- Operating three diggers
- On farm shingling – laneways, stockyards, water troughs
- Pipe line installation & repairs
- Cow lane cleaning

Grader and 20 ton digger available on request

Phone Ron
021 347 958 or 303 6067

2003069

Wellbeing
ŌPUKE

After a very successful first round, Give it a Go is now coming to your area. Based in Mayfield starting on February 10th with Harakeke Weaving co hosted by local St John Kaimahi and Hakatere Marae Chair Michelle Brett; followed for another 4 weeks with soap making, candle making, rock art and cake decorating – we would love to have you join us for these free sessions. Based at the Mayfield Playcentre and running on Friday mornings between 10am – 11.30am, everyone is most welcome but registrations are needed to plan resources. Check out the events on Wellbeing Opuke facebook page or call Juanita on 0225472708 to book a spot – kids are most welcome.

Ashburton District

creative
COMMUNITIES *nz*

We are grateful to have successfully been funded by the Ashburton District Council Creative Communities Grant to run these events and the idea was round connecting communities so come along, have some fun and meet new people in your area.

Fert
Solutions

Fertiliser Spreading Specialists
Liquid, Granule and Lime



Ricky Taylor

027 648 6856

ricky@fertsolutions.co.nz

www.fertsolutions.co.nz

Wellbeing
ŌPUKE

Presents:

GIVE IT A GO!
MAYFIELD



Fridays 10am - 11.30am

February 10th, 17th, 24th
March 3rd, 10th

Mayfield Playcentre Rooms - The Domain, Mayfield

No costs, all materials provided. A range of weekly activities for the whole family to enjoy with local hosts as well as staff from local organisations to provide support around wellbeing.



Follow Wellbeing Ōpuke on Facebook to find Event details and registration links. Or phone Juanita on 0225472708 for further information. Or email wellbeingopuke@gmail.com to register directly.



funded by
Ashburton District

creative
COMMUNITIES *nz*



We have registered a group for City to Surf on Sunday the 19th of March and invite anyone in the Opuke area to join us on the day, cost is \$35 per person and options are to run/walk 12km or 6km. Our group has so far registered for the 6km and we plan to car pool from Methven. We are currently doing weekly walks on a Wednesday morning at 10am and we welcome anyone who wishes to join us either on Wednesday, the 19th or both. Please register under team "Wellbeing Opuke" and let Juanita know you are planning to join us. Always are great day out!

Our popular Coffee group starts up again in February and we would love to meet up with other coffee groups in your area so please let us know when and where and we can meet you with our group. Or come over and meet with us this term under the Oak tree between the Pubs in Methven – again check our facebook page for days/times or message Juanita about this.

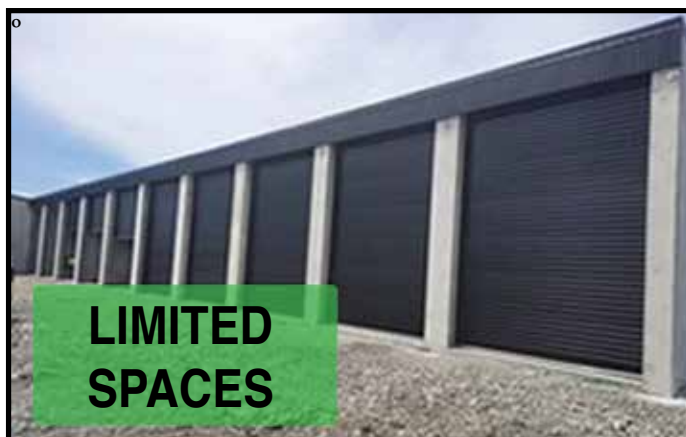
Wellbeing Ōpuke now has a website up and running www.wellbeingopuke.co.nz and a calendar of all our events will be on there very soon so check this out when you get a chance – a great way to find out about other upcoming activities to get involved in, alternately reach out to Jess or Juanita if you have anything coming up we can support via email: wellbeingopuke@gmail.com

Walk Emily Falls 18th January

Our first walk in 2023. 20 ladies enjoyed easy walk and had a great catch up.



Photos supplied by Sanae Hydes


LIMITED SPACES

Ashburton Forks Storage Units
9 and 6 metre deep units with **Extra Height** to accommodate Boats, Motorhomes, Caravans etc.
24/7 monitored security. Power and lights in each unit.

To check availability contact Daisy on 03 3030 802 or message 021 212 3181

Check out our webpage
storage-ashforks.co.nz/home/

1807 Ashburton Staveley Rd (AshForksEngineering)




Joseph Builders Ltd
Canterbury

new builds - renovations
restorations - design
rural - residential
commercial - compliance



03 303 9830 0800 500 564
josephbuilders@xtra.co.nz



www.josephbuilders.co.nz

Stockists and installers
of quality **PEDROLLO** waterpumps



Pedrollo pumps are designed to lift water from wells, tanks or waterways to supply anything requiring a reliable pressurised water system.

Typical uses include homes, gardens, stock troughs, K-line and tank filling.

Available as 3/4hp, 1hp, 1 1/2hp, 2hp and 3hp sizes.

We have the water pump to suit your situation, call in today for more information

///ACL
ARTHUR CATES LTD

26 McNally Street, Ashburton 7700. Phone (03) 308 5397

Mt Somers Staveley Playcentre

We hope everyone had a lovely holiday period and managed to find some time to relax. We are now back into having fun at Playcentre as of this week. We had a great Christmas Party on the 16th of December, complete with waterslide, fire engine rides, iceblocks and Santa! The children had a ball and us parents enjoyed a good catch up.

We were invited to a Christmas party at Mt Somers Springburn School on the last day of Term 4, thank you for having us Tussock, it was a blast!

We also said goodbye to Tahlia and her Mum Amy at the end of Term 4. Tahlia, you big 5 year old, we know you'll be ruling the school in no time! Amy, thank you for all your help and knowledge during your time at Playcentre, including stepping into the role of temporary Session Facilitator, you're a star!

We're still looking for a permanent Session Facilitator to join our fun little Centre so if you know of anyone suitable that would like to hang out with a wonderful bunch of kids and their friendly mums a couple of times a week, please get in touch!



Dedicated to you



RayWhite.

At Ray White Mid-Canterbury, our 22 dedicated team members are here to help from the moment you make contact.

From the receptionist to the salesperson who closes your sale, the strength of our team is in our combined commitment to ensuring your journey with us is a good one. We work together to make sure that with the Ray White team, you get the results you want. **Chat to us today on 03 307 8317.**

Ashburton

96 Tancred Street
Ashburton
03 307 8317
rwashburton.co.nz
ashburton.nz@raywhite.com

Tinwald

117a Archibald Street
Tinwald
03 307 8317
rwashburton.co.nz
ashburton.nz@raywhite.com

Methven

4/36 McMillan Street
Methven
03 303 3032
rwashburton.co.nz
ashburton.nz@raywhite.com

Real Estate Mid Canterbury Property Limited Licensed (REAA 2008)



STOP BIRDS

hail, leaves, snow & vermin from blocking & damaging your spouting

Quality materials: BHP Colorbond steel mesh with unique patented louvre will even keep out pine needles. Will not rust or sag with age or load. 10 year warranty, range of colours

Proven in Australia & New Zealand over the last 15 years.

FOR SAFE, PURE DRINKING WATER FROM YOUR ROOF.

NOW AVAILABLE : STAINLESS STEEL MICRO MESH

Call **Rohan** anytime Mon-Sat for a no-obligation assessment & quote
03 982 8850 0800 486532

GumLeaf
www.gumleaf.co.nz

Jo Luxton

MP for Rangitata

03 339 1030
RangitataMP@parliament.govt.nz

Office hours:
 Monday–Friday, 9.30am–2.30pm
 75 Harrison Street, Ashburton






Authorised by Jo Luxton MP, Parliament Buildings, Wellington

Mt Somers Excavation Ltd



- GENERAL FARM MAINTENANCE
- ALKATHENE PIPE LAYING
- IRRIGATION MAINLINE TRENCHING
- 8, 14 & 20 TONNE DIGGERS
- TIP TRUCK & TRAILER
- GRADER
- SCREEN SHINGLE SUPPLIES
- TREE REMOVAL

Alistair Parris Owner / Operator - 20 Hinds Gorge Rd RD 8 Ashburton 7778
Ph: 027 434 7278 | E: mtsomersexcavation@xtra.co.nz | www.mtsomersexcavation.co.nz

MAYFIELD SPRAYING LTD

Family
owned &
operated



For all your agricultural spraying and liquid fertiliser needs with competitive rates phone Tony today.



MAYFIELD SPRAYING LTD

Tony 027 248 7045
mayfieldspraying@gmail.com



Dear Customers,
I would personally like to thank everyone for their support over the last few years. My family and I have now moved south to the Gore District to pursue other work and life opportunities.

Thank you all for using Rural Electrical Ltd for your Electrical servicing and installation work.

I don't want to leave people in the lurch so we are lucky enough to have an electrical contractor to fill my position in the area. If you have any electrical work please don't hesitate to call

Pete Bryant on 027 307 8003.

Pete Bryant has an electrical company, Sparky 4U, and is keen to work in the Mt Somers and all surrounding areas.

I have known Pete personally for many years and can vouch for his electrical expertise. Pete Bryant also has my details so can call me for any information I may be able to pass on from previous jobs.

All the best
Peter Philpott Rural Electrical Ltd

agstaff

Good Buggers You Can Trust

Permanent and Temporary Staff Solutions

Experienced Stockmen

Fencers

Tailing Staff

Tractor Drivers

Specialised Rouging Gangs

Spraying Gangs

Give Andrew McDonald a call, he'll see you right!

0800 AGSTAFF
andrew@agstaff.co.nz

021 502 484
www.agstaff.co.nz



Mayfield and Districts Lions Report

Know someone age 18 years or older who would benefit from an outdoor challenge, set in a non competitive, safe and supportive environment?

The Berwick Outdoor Experience has provided many opportunities over the last 30 years for participants to challenge themselves and achieve personal goals beyond their imagination.

This is an 8 day course designed to learn and build skills that lead to a higher level of self-esteem by Teamwork, Leadership, Confidence and Initiative. For more information on the course, google Berwick Outdoor Experience.

Our club is looking for potential participants to sponsor on this course, from the 12th to 20th May. Contact is M. King 3036 033.

Club members provided daytime security for the recent Venturers Scouts Jamboree, held in the Mayfield Domain.

We have a good supply of Firewood for sale; Pine \$325/cord, Bluegum \$400/cord, Oregon /\$350.

Contact Ron Cross 021 347 958

Work Wanted

Part or full time work on a farm in the Mayfield - Mt Somers area for semi-retired farm worker. Experience with stock work, sheep and beef mostly, but has reared calves and worked with pigs and deer. Experienced with fencing, water supply and general farm maintenance. Ideal for farm-minding while you take a break. Contact John on 0210 246 1321 or 03 3036 144



**Mt Somers
Rugby Club**



**We are looking for
expressions of interest
regarding coaching roles
for our JAB teams.**

**Please contact
Thamis Heybrook on
022 3546 524**

Local vets, Nationwide support

We have everything you need at
VetEnt Mayfield.

Pop in and see Chantel
for all your farm and
animal health supplies.

VetEnt Mayfield
1984 Arundel Rakaia Gorge Rd,
Mayfield
P: (03) 303 6042

VET-ENT



Rural Livestock

NZ Owned & Operated. Est 1988



MID AND SOUTH CANTERBURY

John Harrison (Mid) - 0272 262 964

Fraser Adams (Mid) - 0274 730 823

Quinten Botha (South) - 0274 730 885

Aaron McCall (South) – 0276 855 702

Contact one of our team for on farm advice and solutions. Experts in all classes of livestock for private sales, auctions, valuations, and prime stock drafting.

NEWS FROM PLAINS PRESBYTERIAN PARISH

"They Were Set For Home....." Peter Cape

The Manger Scene in NZ terms by poet and song writer Peter Cape a NZ vicar of the 1950's and 60's

As recited at the carol service Christmas Eve, Trinity church Mayfield.

They were set for home, But the horse went lame
And the rain came belting out of the sky
Joe saw the hut and he went to look,
And he said, "She's old, but she'll keep you dry"
So her kid was born in that roadman's shack,
By the light of a lamp that'd hardly burn.
She wrapped him up in her hubby's coat
And put him down on a bed of fern.
Then they came riding out of the night,
And this is the thing that she'll always swear
As they took off their coats and came into the light
They knew they were going to find her there,
Three old jokers in oilskin coats
Stood by the bunk in that leaky shack
One had a beard like a billygoat's
One was frail, and one was black
She sat on the foot of the fernstalk bed
And she watched, but she didn't understand
When they put those bundles at the baby's head
And this river nugget into his hand

*Gold is the power of a man with a man
And incense the power of man with God
But Myrrh is the bitter taste of death
And the sour-sweet smell of the upturned sod
Then they went while she watched through the open door,
Weary as men who had ridden too far
And the rain eased off and the low cloud broke,
And through a gap shone the light of a single star.*

Interim Moderator Awaiting appointment
Parish Clerks, Annette Syme Ph 303 0803
Liz Depree Ph 021889341
Parish Contacts:

Kevin Taylor ph 303 6392
Kay King ph 303 6033
Website plainspresbyterian.co.nz
Facebook.com/ PlainsPresbyterianParish
WORSHIP SERVICES FEBRUARY 2023

Sunday 5th Feb ST JOHNS METHVEN 10.30
Sunday 12th Feb St Johns Methven 10.30 am
Sunday 19th Combined at All Saints Methven 10.30am
Sunday 26th Feb Trinity Mayfield 10.00 am
Paster Paul Eden

MAYFIELD MT SOMERS ANGLICAN PARISH

That's that then, done and dusted for another eleven months, Christmas and New Year. Come to think of it, I didn't hear anyone talking about their New Year resolutions and thinking still further, when did I last hear of anyone making New Year's resolutions? Is it old hat now or is it that I spend most of my time with people nearer my age, who are past making resolutions that will surely be broken.

But life is a never-ending learning curve isn't it, so what can I think of that despite my advancing years, I learned last year. I will have to give that more thought, but I know there will be many things. That's what life is all about, learning and hopefully benefitting from what we have learned.

Despite all the bad things that are still happening, there are also many good positive things. There are still good, kind people out there who go out of their way to look after their friends, their neighbours and even complete strangers. And that is as it should be. I feel warmed when I hear about the positives, of people caring for others. Long may this go on in our own wee world and in outside world.

None of us want to be part of a world, where there are no expressions of love to our fellow journeyers. Remember the maxim,

"Love makes the world go round" and let us all be part of the loving and kindness this world so sorely needs.

Blessings, Annette Eggleston

ASH WEDNESDAY SERVICE

Wednesday 22nd February 2023
7 p.m. St Aidan's, Mt Somers

ANGLICAN SERVICES

Priest: Rev Annette Eggleston
Holy Communion

Feb 5 10 a.m. St Aidan's, Mt Somers
Feb 19 10 a.m. St Aidan's, Mt Somers
Archdeacon Indrea Alexander
Feb 22 7 p.m. Ash Wednesday Service
St Aidan's, Mt Somers
Mar 5 10 a.m. St Aidan's, Mt Somers

CHRISTCHURCH CITY MISSION - MEAT & FOOD DONATIONS (especially meat)

Please contact Harvey & Annette Eggleston on 3024 006 if you have donations

PARISH CONTACTS

Parish Priest - Rev Annette Eggleston
Email: harann000@gmail.com 3024 006
Church Warden - Pauline Hewson 3036 397
Church Warden, Secretary / Treasurer
- Marion Jacobson 027 3607 180
Email: marion.i.jacobson@gmail.co

Census Day is 7 March 2023





2023 On-Farm Heifer Competition

Judging to be held in the afternoon on the 15th and 16th of March

CLASSES:

1. Rising 1 year old Dairy Heifers born after 1 July 2022
 2. Rising 2 Year old Dairy Heifers born after 1 July 2021
 3. Rising 1 and 2 year old Beef Heifers born after 1 July 2021/2022 (subject to entries)
- Please note this year Owners and Graziers will be judged in the same classes

Name: _____

Email: _____

Cellphone: _____

Class no:	No. of heifers in line	Breed	Location – Please include rapid number, road name, and farm/farm owner name
1			
2			
3			

Please email your entry form to either Jon Dampney jonabbo@hotmail.com 021 22 33 683 or Suzy King suzyking@yahoo.com 027 491 5632. Entries close Wednesday 9th March 2023.

ENTRY FEES: Members \$20 / class Non Members \$25 / class

Annual Membership to the Mayfield A & P Association is \$20 and can be paid with your entries.

Paid By Direct Credit to Bank Account Number 03 1903 0059913 00

Please put your name and heifer competition as reference.

The Treasurer, Lynley Mackenzie, R.D. 8, Ashburton 7778, mayfieldshow15@gmail.com.