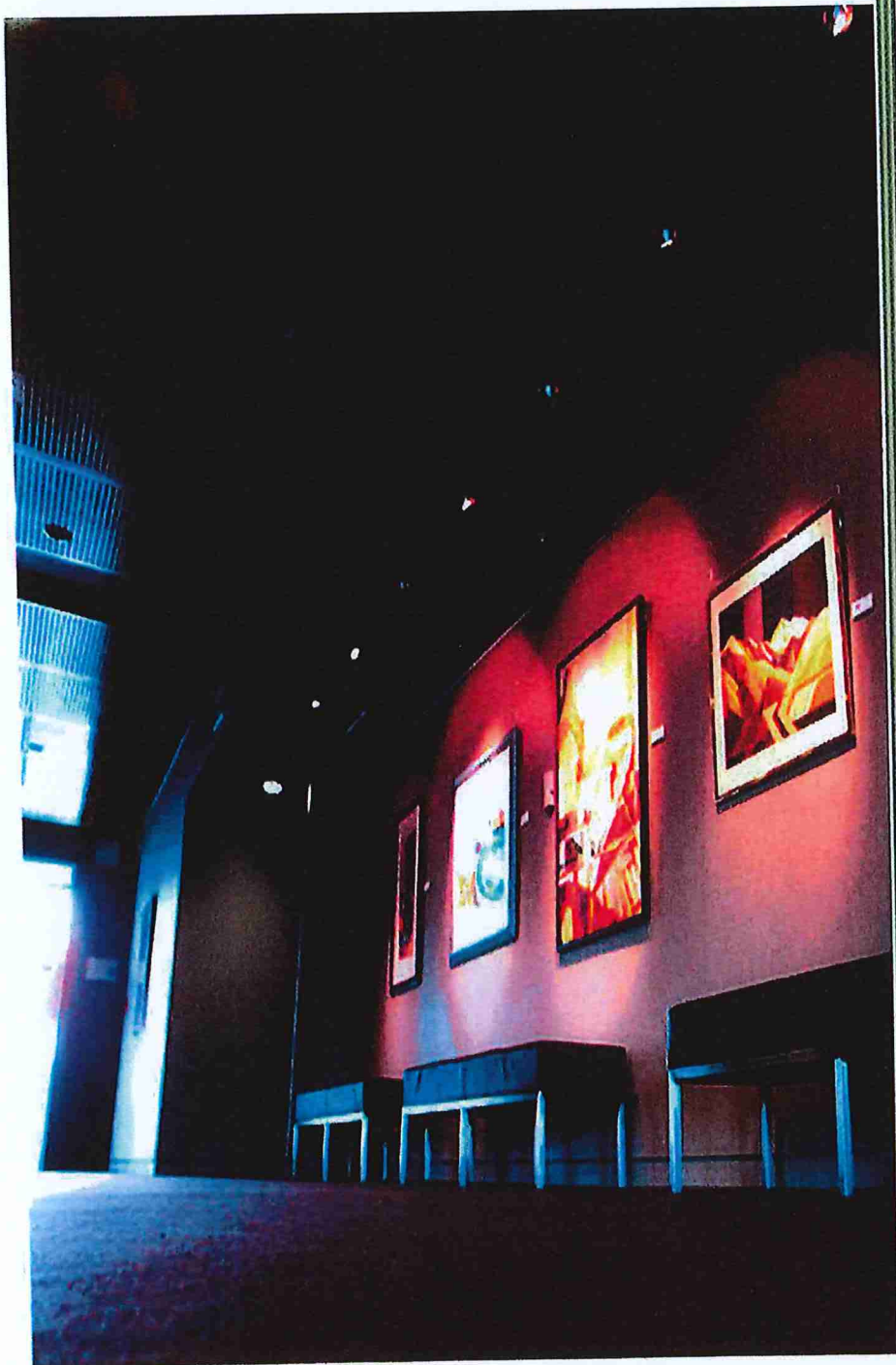


# Ashburton Performing Arts Theatre Trust Capital Upgrade Information

January 2024



ASHBURTON  
event centre



Roger Farr  
General Manager  
15.1.2024



CELEBRATING 15 YEARS OF PERFORMANCE AND CORPORATE ENGAGEMENT.

Funding our future

Dear Mayor and Councilors,

It is hard to believe we have been showcasing the very best local, National and International performing arts talent on our stage for fifteen years. Over the years, our venue has been a stage for countless awe-inspiring performances, connecting artists with our audiences in unforgettable ways.

**Fifteen Years of Performance: A Legacy of Excellence.**

Since opening our doors in 2008, our venue has played host to an astounding array of performances, from world-renowned ballets to spellbinding orchestral concerts, electrifying rock shows and incredible musical theatre performances. We are proud to announce that over the last 15 years, an incredible 175,000 patrons have enjoyed, supported and witnessed the incredible talent we have in our district, and from further afield, much of which has blossomed thanks to the facilities and support we have available at the Ashburton Event Centre.

From the beginning, the Ashburton Performing Arts Theatre Trust had a clear vision to establish a Performing Arts Venue that supported not just the many local performing arts organisations in Mid Canterbury, but also a large number of touring artists, a venue that provided them with the most up-to-date facilities, equal to our larger counterparts throughout New Zealand, and to provide an educational opportunity for students to learn the many production elements involved in theatre, from performance, technical sound and lighting to stage construction and stage management. A meeting space that provided the opportunity for the community to meet on a social, intellectual or educational level to enhance their lifestyle. To provide for a culturally diverse community needing to share and celebrate their cultural diversity through performance and entertainment.

**The Need for Renewal: Investing in Our Future.**

While we celebrate this milestone, we must also look ahead. The Ashburton Performing Arts Theatre Trust has strived to maintain a high level of functionality ensuring it remains fit for purpose. But, just like a masterpiece requires periodic restoration and renewal, our much-loved venue is in need of an upgrade to ensure it continues to inspire future generations of performers and showcases their performances in comfortable and inviting surroundings. The wear and tear of 15 years of events, changing technology and evolving safety standards, necessitates significant renovations.

**Our Vision: A Venue Fit for the Future:**

Our vision remains clear – to ensure our venue remains a state-of-the-art facility that can accommodate even more remarkable performances and artist endeavours through the provision of technology, equipment and facilities relevant to current industry practices. This revitalisation effort will include:

1. **Acoustic Enhancement:** Upgrading our existing acoustic PA system to the modern Line Array speaker system complete with a new, larger mixing console.



2. **Networking Upgrade:** Install networking capabilities that enable the provision of audio-visual display across the venue.
3. **Theatrical Lighting Upgrade:** Upgrade the theatrical lighting to the more eco-friendly LED lighting systems now available.
4. **Accessibility:** Improving accessibility features to create a more inclusive environment for all patrons.
5. **Technology:** Integrate cutting-edge technology to enhance the visual and auditory experience for our audience including hard of hearing.
6. **Sustainability:** Implementing eco-friendly initiatives to reduce our carbon footprint, including trade waste, and power consumption.
7. **Furnishing, Flooring and Wall Covering Upgrade:** Refresh the decor ensuring the venue remains an attractive and inviting place for the purpose of social interaction.

In marking 15 years of excellence, we recognise that our journey is far from over.

The support the Ashburton District Council has shown towards the Trust must be acknowledged. Without that support, we would have been unable to provide the community with the level of support and the facilities we now offer.

### Funding Request

Over the last fifteen years, the Theatre Trust has not been in a financial position to fund depreciation on our assets. The latest Audited Accounts show an annual depreciation of \$143,991 with an accumulated depreciation of \$2,173,449.

Looking forward, large ticket items such as air-conditioning, heating plant, carpets, paint and technical sound and lighting equipment are going to need replacing in the coming years and a plan must be now put in place that ensures the Trust has the financial capability to address these issues in the near future.

Our request to the council is for the establishment of an APATT Capital Expenditure account, administered by the council, where the council contributes a set amount annually as part of our Operational Grant, that is accessible to the Trust upon application. The accumulated funds would then be used for the expenses listed under *Priority Two* in the *Venue Upgrade Proposal*.

With your continued support and engagement, we look forward to making our venue an even more vibrant hub for the performing arts, a place where creativity knows no bounds, and where the magic of the stage continues to captivate hearts.

We thank you for being part of this incredible journey as we begin the task of raising the funds necessary to ensure our continued success. Together with your support, we will ensure that the Ashburton Performing Arts Theatre Trust remains a shining star in our community's cultural landscape.



Here's to the next 15 years of excellence and innovation.

# Venue Upgrade Proposal



## Capital Expenditure

### Woodham & Guardian Foyer

- Proposed

- Permanent Speaker System Upgrade - Mount permanent speakers on SW wall.
- Feature Lighting - Install feature lighting for evening pre-show functions.
- LED Theatre Lights - Upgrade theatre lighting to LED
- Marketing TVs - Install window marketing TVs (rental income)
- Repaint - Woodham Foyer, Guardian Gallery, Offices and Bar (see quotes)
- Re-Carpet - Woodham Foyer, Guardian Gallery, Offices and Bar
- Re-upholster Fabric Wall Panels.

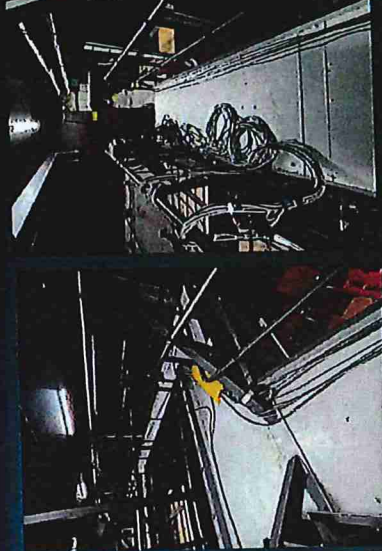
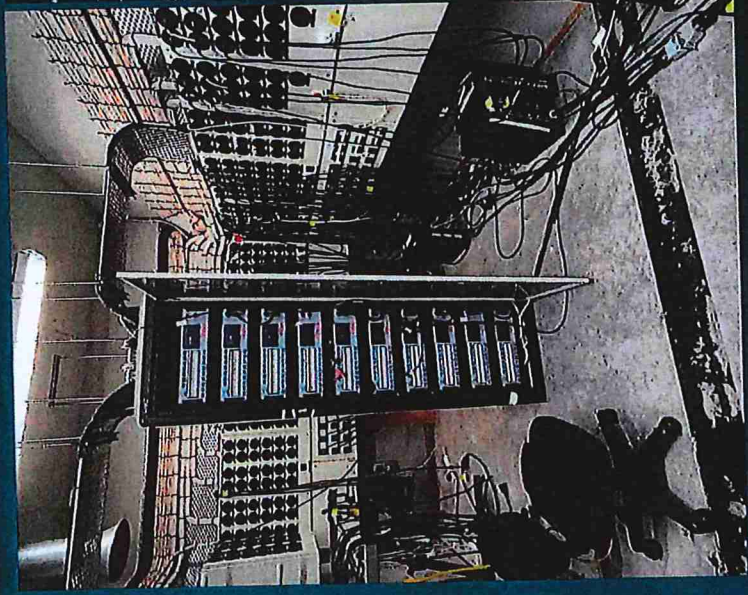


# Capital Expenditure

## O-Reilly Auditorium

### Proposal

- Hardwire network cables.
- Install dedicated networking system. Plug and play concept.
- House Lighting LED upgrade.
- Theatrical Lighting Upgrade
- Sound Upgrade
- Re-paint
- Re-Carpet

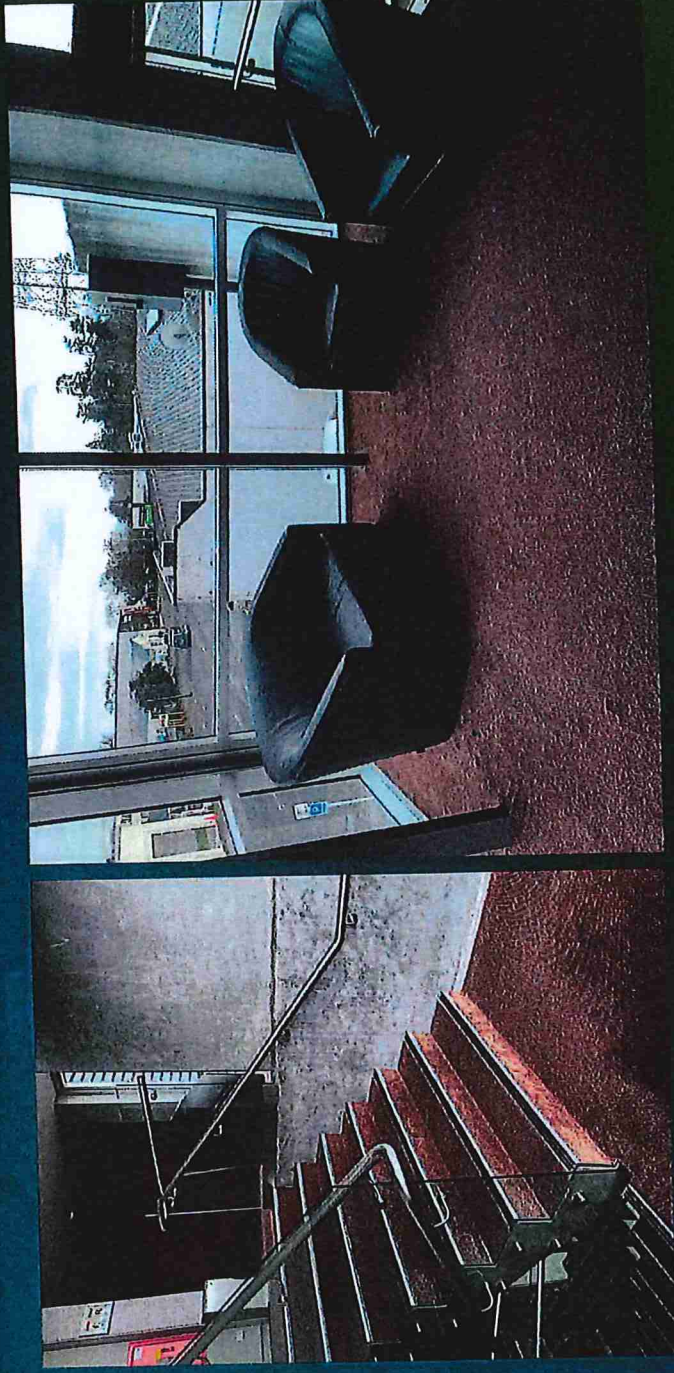


## Capital Expenditure

## Variety Theatre Foyer

### Proposal

- Solar Blinds for windows.
- Window tinting (carpet protection)
- Re-upholster Fabric Wall Panels.
- Re-carpet
- Re-paint





# Capital Expenditure

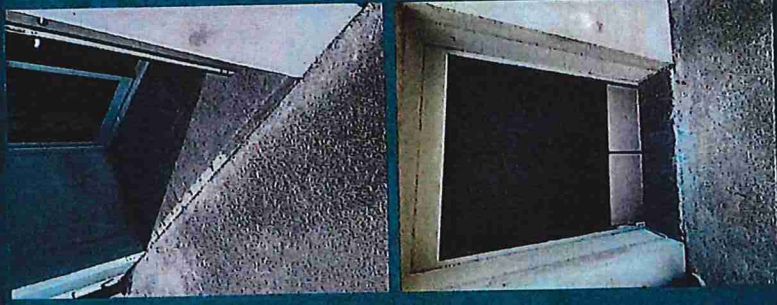
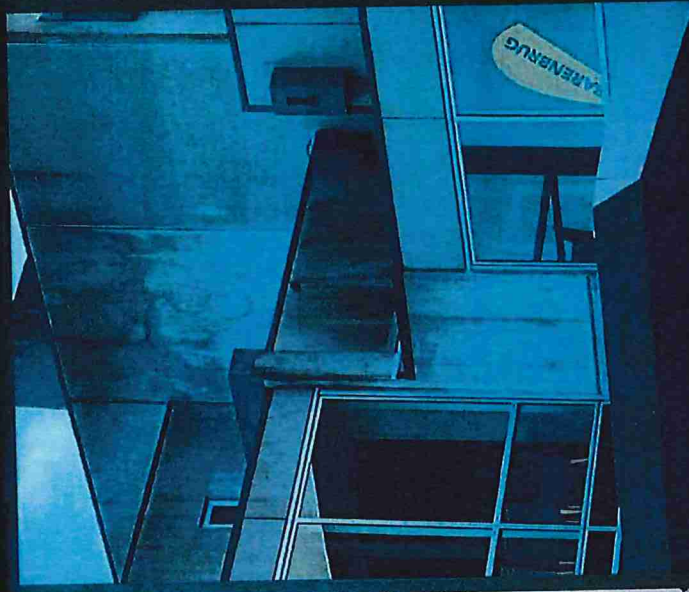
## Bradford Room

### Proposal

- Re-carpet
- Re-paint
- Re-upholster Fabric Wall Panels.



## General



## Capital Expenditure

- **Proposal**
- Replacement lights on exterior of building. Fly tower.
- Seal/paint exterior concrete walls
- Tile Repairs/Replace

ITEM	Estimated Quote Excl GST	FINANCED BY				Regional Culture Heritage Fund	Ashburton District Council	Braided Rivers Community Trust	Grant Lotto
		APAIT Funding	Grant Lion Foundation	Grant Mid 5th Cant Trust	Grant Community Trust				
<b>2023-2024</b>									
<b>Priority 1</b>									
Audio									
Line Array PA Adamson FOH PA System	\$ 284,538.00	\$ 50,000.00	\$ 100,000.00	Received in 2023 \$ 25,000.00	\$ 25,000.00		\$ 25,000.00	\$ 84,538.00	
Mixing Console SQ7 Allen and Heath	\$ 19,632.00	\$ 10,000.00						\$ 9,632.00	
Radio Mics Sennheiser x 8	\$ 10,000.00	\$ 10,000.00							
Networking									
Master Control Infrastructure	\$ 22,918.00		\$ 22,918.00						
Main Auditorium	\$ 30,904.00		\$ 30,904.00						
Breakout Space 1 Large (Woodham Foyer)	\$ 10,727.00								
Breakout Space 2 Smaller (Bradford Room)	\$ 15,926.00								
Lighting									
Dimmer Control System	\$ 50,000.00	\$ 50,000.00							
	\$ 444,645.00	\$ 120,000.00	\$ 153,822.00		\$ 25,000.00		\$ 25,000.00	\$ 94,170.00	Total Priority 1 \$ 417,992.00
<b>Priority 2</b>									
Refurbishment									
Paint & Décor, Interior, Exterior	\$ 84,482.00						\$ 84,482.00		
Furnishing, Wall Cover	\$ 20,000.00	\$ 20,000.00					\$ 20,000.00		
Furnishing, Floor Cover	\$ 98,000.00						\$ 98,000.00		
	\$ 202,482.00	\$ 20,000.00			\$ -		\$ 182,482.00	\$ -	Total Priority 2 \$ 202,482.00
<b>Priority 3</b>									
Theatre Lighting									
Intelligent Lighting LED x 8	\$ 62,740.00							\$ 62,740.00	
Move rack LED Wash x 15	\$ 123,260.00							\$ 123,260.00	
Audio Visual									
LED Projector (O'Reilly Auditorium)	\$ 40,000.00	\$ 40,000.00							
	\$ 226,000.00	\$ 40,000.00						\$ 186,000.00	Total Priority 3 \$ 226,000.00
	\$ 873,127.00	\$ 180,000.00	\$ 153,822.00	\$ 25,000.00	\$ 182,482.00	\$ -	\$ 25,000.00	\$ 280,170.00	\$ 846,474.00

# AEC Venue Upgrade

Rational behind each of the Priority Upgrades –

**Priority 1** – Essential to the operation of the venue at a level that assures that the itinerant hire and local performing arts groups benefit from a recognised standard of sound reproduction. Where failure of any of the components would have a serious impact on our brand image and ability to function within the expected standards of the industry.

## Audio:

### Liner-Array PA System

- The current PA (sound system) when installed in 2008 was second hand meaning it could be as much as twenty years old.
- A failure in any part of the PA system would leave the venue with inadequate capabilities to operate at its current level.
- Sound systems have improved immensely over the life of the current system where Line-Array systems are now an industry standard and are being installed in most modern venues.
- There is an expectation that AEC should meet the current industry standards for sound production.
- Sound production is a critical component in any event where sound reinforcement is required and normally the first criticism received when it is not of standard.

### Mixing Console Allen and Heath SQ7

- In the time that AEC has been operating, the productions being produced by various community organisations and touring groups, have become more complex with a larger cast and live musicians requiring a mixing console capable of handling a larger number of microphones and auxiliary inputs.
- The current mixing console is now 11 years old and susceptible to failure.

### Radio Microphones Sennheiser

- Microphones are subjected to a lot of wear and tear over their life.
- Critical to achieving quality sound enhancement.
- Pointless having a quality PA without having the same quality microphone.

## Summary

The proposed audio package will ensure the AEC will have an audio system equal to recently built, similar-sized venues and capable of achieving a high level of quality and performance for many years to come. The Adamson Liner-Array system is recognised as being of excellent quality and has been installed in the Piano in Christchurch and a performing arts venue in Rotorua, both of similar size and capacity to the AEC.

**Priority 2** – Essential to the aesthetics of the venue at a level that assures the audience of a functional, comfortable well-maintained venue that encourages them to meet at a social level to be entertained or a corporate level for education and networking.

## Refurbishment:

Paint and Décor. Interior & Exterior

## AEC Venue Upgrade

- A refresh of the interior paint is required to keep the public areas and workspaces relevant to modern décor trends.
- Public areas are subjected to high traffic flows and the installation of trade display booths etc. causing superficial wear and tear.

### Furnishing and Wall Covering

- Sound-absorbing fabric wall covering located in the Bradford Room, Variety Foyer and Woodham Foyer has faded and needs replacing.
- Carpets across the venue have worn or become faded due to exposure to the sun and high foot traffic.

### Summary

Décor is essential to creating a welcoming vibe in our venue, where our audience or corporate delegates can relax in comfort. Our promoters recognise our venue as being one that provides attractive surroundings and support for their audience members and the Corporate Event organiser recognises as venue as having a professional level of service and capability.

**Priority 3** – A need to continue the development of our technical capabilities and provide sustainability through eco-friendly LED Lighting practises.

### Theatre Lighting

- Upgrade current lighting fixtures to LED reducing our energy consumption and maintenance.
- Upgrade our current lighting fixtures to intelligent lighting capable of performing more than one task and limiting energy consumption.
- Upgrade the theatre lighting rig to meet modern-day practises that benefit local and itinerant hirers.

### Audio Visual

- Upgrade the current Audio Visual projector to an LED projector.

### Summary

AEC believes it has a responsibility to limit its eco-footprint by using sustainable methods of operation. To provide up-to-date equipment that meets best practice standards and offers the ability for staff to become educated in the use of modern-day equipment and practises.