

9 Former ANZ Bank

The Union Bank opened this classical style, Art Deco influenced, building in 1939, replacing the 1875 Union Bank building on the same site.



Today's building is made from reinforced concrete. Press coverage of the opening day said "The banking chamber is well lit by windows on both frontages, the interior finish is white plaster work with fittings and panelling in rimu. Mahogany has been used for the counters".

The Union Bank building later merged with Bank of Australasia becoming the ANZ. Later the National Bank merged with ANZ, retaining the ANZ name and moving site.

10 Federated Farmers Building

— turn and look west

Blue
Plaque



The Federated Farmers building stands on the corner of West and Tancred Streets. It is an attractive Edwardian brick two storey building, decorated with Oamaru stone, and built in 1912.

It was originally built for the Bank of Australasia, at a cost of £3270, replacing an earlier timber building. It was designed by Atkins & Bacon, built by W. Greig & Sons. The bank later merged with the Union Bank to form the ANZ Bank and moved to a new location. In 1938 the NZ Loan & Mercantile Co. Ltd purchased the building, and it now serves as the offices of Mid Canterbury Federated Farmers, as well as a firm of lawyers.

At one stage it had a distinctive corner entrance, which was later changed to an entrance on West Street but now has reverted to the original style. Fortunately, it retains much of its original form, standing as a model of strength and dependability in the Ashburton streetscape.

11



Read all about Burnett Street on the interpretation panel on The Green.

12 Murney Building & Murals



Murney Main was completed in 2020 and became the tallest building in town. Some say it is the jewel of the town with its weathered copper façade and beautiful bird murals seen from each side corner.

As a building with a point of difference, we included it in this walk for its cultural aspects.

The restaurant and bar on the first floor of this building has a post-colonial feel. The ground floor houses a bank, and on the third floor is Murney's office and a roof top bbq and lounge area for private functions. No expense was spared on this building.

13 Cates Building — turn and look west



This building, built in the late 19th Century by the Friedlander Brothers, was one of many other purpose built grain stores on West Street at the time. Its round roof is formed by laminating thin timber into curved beams and adds to its heritage status.

The location was ideal as it was directly connected to the railway line by a turntable that allowed wagons to enter the building to load grain.

This building was consistently used for its original purpose until 2015. Now it stands as a good example and reflection of Ashburton's past and current links with the agricultural industry.

Cross Havelock Street and either return to the Library and Civic Centre, Te Whare Whakare, or continue on the second part of Ashburton's Heritage and Cultural town walk.

Pick up a copy of the second brochure which takes you on a journey on the west side of the town.

We thank the Ashburton Museum and Historical Society for sourcing the included historic photographs.

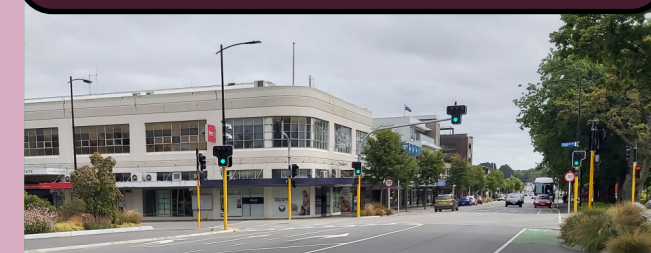
HERITAGE



HAKATERE ASHBURTON TOWN WALK

Part One

Approximate time: 30 minutes



CULTURAL

Created by Historic Places
Mid Canterbury &
Funded by Ashburton
District Council

HISTORIC
PLACES
MID CANTERBURY
The Voice of Heritage

Ashburton
DISTRICT COUNCIL

1 Pioneer Hall

Pioneer Hall has a huge social history, so when the new library and civic centre was designed to go on this site, a unique decision was made - Pioneer Hall would be absorbed within the new build.



Blue Plaque

Built in 1916, its original use by the Hospital Board was short-lived. Next it was Ashburton's first Plunket Rooms, before being taken over by the County Council engineering department until 1939 when new and larger offices were built.

Less glamorous but more appreciated by the women of the district, it became the town's Women's Rest Rooms and meeting place and fulfilled this role admirably for the next 30 years.

Another first, it became our first Museum in the early 1970s, when it became known as Pioneer Hall. In 1978 the museum relocated. Pioneer Hall became the local Taxi office, then the headquarters for Birthright for 14 years.

In 2007, the local branch of NZ Historic Places Trust, later reincarnated as Historic Places Mid Canterbury, took over the lease. It was they who lobbied hard to retain the building, vacating it in 2020 for its new life within the new Civic Centre.

2 Former Bank of New South Wales

Strong and solid, this attractive brick building was built as a bank and served this purpose for nearly 100 years before becoming a popular restaurant.



Blue Plaque

Opening in 1898, it housed the Bank of New South Wales.

The manager lived upstairs, accommodation comprised 5 bedrooms and bathroom, with sitting room, dining room, kitchen and scullery/wash-house downstairs.

During World War 1 the bank suffered a shortage of manpower and the Ashburton Branch became one of the first in New Zealand to employ women. Some managers opposed this and one even suggested that it would be necessary to employ two women to replace one man as he considered women incapable of sustained work!

Until 1934, each of the trading banks had issued its own bank notes. These notes had been of any size and colour and members of the public expressed increasing dissatisfaction at this. From August 1, 1934 bank notes became uniform with the Reserve Bank of New Zealand the sole bank to issue them.

3 Mural, Cass Street



Commissioned mural artist Koryu Aoshima, took several weeks to complete this large scale work call **Hakatere** (the Maori name first given to the Ashburton River some 800 years ago).

Koryu used the opening ceremony of the Olympic Games in his homeland Japan, as inspiration for a rainbow flag representing people from around the world coming together in Ashburton. His 'welcoming mural' was selected by public vote. On Saturday 24th July 2021 it was officially completed when Koryu added his signature.

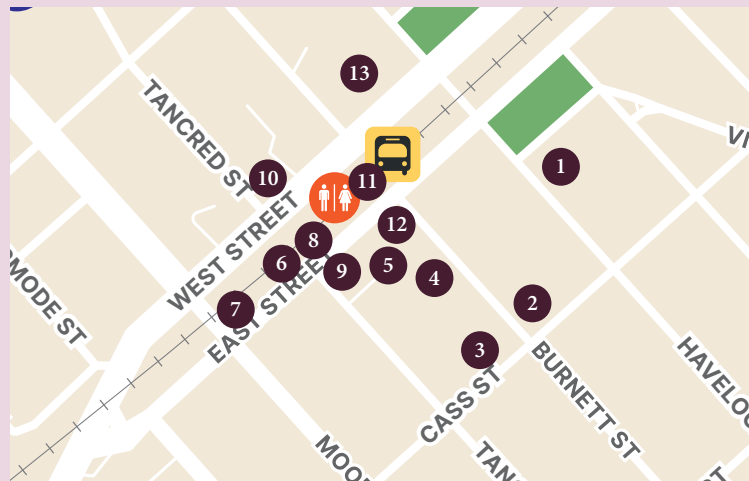
(The Ministry of Business, Innovation and Employment supplied funding for the project, also supported by several local businesses.)

4 Pillar Box, Burnett Street

Call it a post box, call it a mail box, this formally named 'letter receiver' has been accepting mail from this site for well over 100 years.

It is thought to have been made by P & D Duncan of Christchurch and the box bears a 'VR' insignia on the lower front indicating it was manufactured prior to Queen Victoria's death in 1901.

This Pillar Box is still used on a daily basis.



5 The Arcade

The Ashburton Arcade has served the town for over 140 years.



It was built for Thomas Bullock who first came to Ashburton in 1871 to buy a farm, but instead went into trade as a general merchant and stock agent. The northern end was completed in 1882. It had a brick front with shops underneath and offices above. A short time later the southern end was added to accommodate more offices. The centre space was occupied by an area for horses and horse auctions.

At this time it was one of the largest arcades in the Southern Hemisphere. The remaining curved trusses are an early and rare example of the use of laminated timber.

Walk through the Arcade from Burnett to Tancred Streets

6 East Street Water Feature

The Three Rivers water sculpture has been a feature of the main street since 1994.



The design is based on the three major rivers of Mid Canterbury; the Rangitata, the Ashburton and the Rakaia. The water movement is a synthesis between artistic beauty and ecological function. The sculpture was designed and cast by Iain Trousdell.

Find these two interpretation panels on the East Street green space to learn more about our town's past.

