

It's Our Place

Draft Waste Management & Minimisation Plan 2022

Our Place: Our Waste – Managing it responsibly
Consultation Document

We are reviewing our Waste Management & Minimisation Plan and want to hear your feedback on what we're proposing for the next six years.

We are accepting feedback until 5pm, Thursday 23 June 2022.

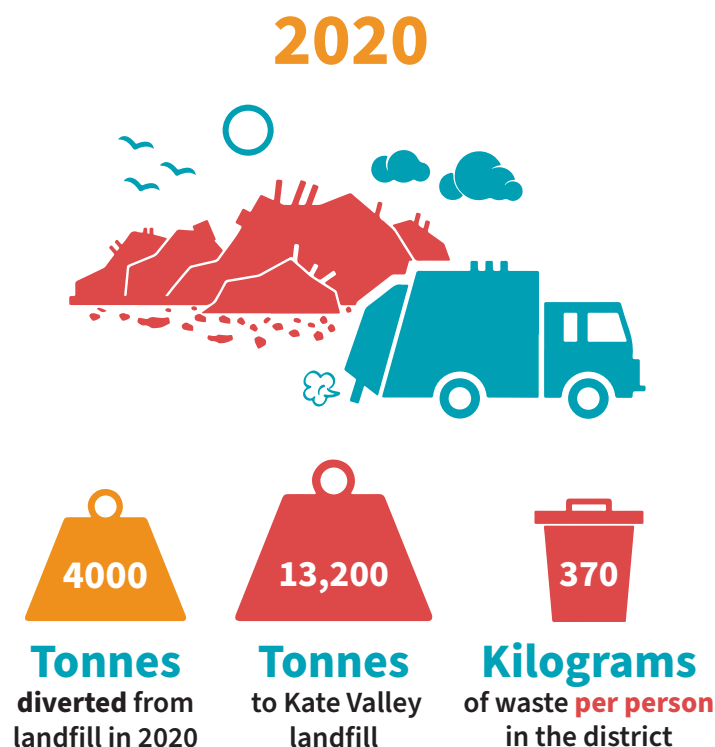
Introduction

In 2020, nearly 4000 tonnes of material was diverted from landfill in our district.

But we still sent just over 13,000 tonnes to Kate Valley landfill (this is over 370 kilograms of waste per resident per year). We believe a lot of this waste could have been reused, recycled, or composted.

This is our focus moving forward. We want to improve the amount we divert from landfill over the next six years.

Rubbish collected in Council's kerbside collection makes up only a third of all landfilled waste, so while we can make improvements to our kerbside collection services, the Plan covers **all** solid waste and recovered material in the district, whether it is managed by us or not.



*Have your
Say!*

Our focus is on increasing the amount we divert from landfill over the next six years.

The full Draft Waste Management & Minimisation Plan is available from
ashburtondc.govt.nz/haveyoursay

We are accepting feedback until 5pm, Thursday 23 June 2022.

***We want to
hear from YOU!***

Why do we need a plan?



Managing waste and ensuring good outcomes for the community can be a complex task.

We need to look after the environment, take care of people's health, and make sure that this is done at an acceptable cost to the community. To achieve these outcomes will require all parts of the community to work together.

We are required under the Waste Minimisation Act 2008 to promote effective and efficient waste management and minimisation in the Ashburton district.

One of the key ways we do this is by adopting a Waste Management and Minimisation Plan.

While the plan is adopted by Council, it sets the priorities and a strategic framework for managing all waste in the district. So, we need input from community and business to ensure success. Once adopted, the actions will be carried forward into our Long-Term and Annual Plan to ensure we have the resources to deliver our goals and objectives.

**Give us your feedback at
ashburtondc.govt.nz/haveyoursay**

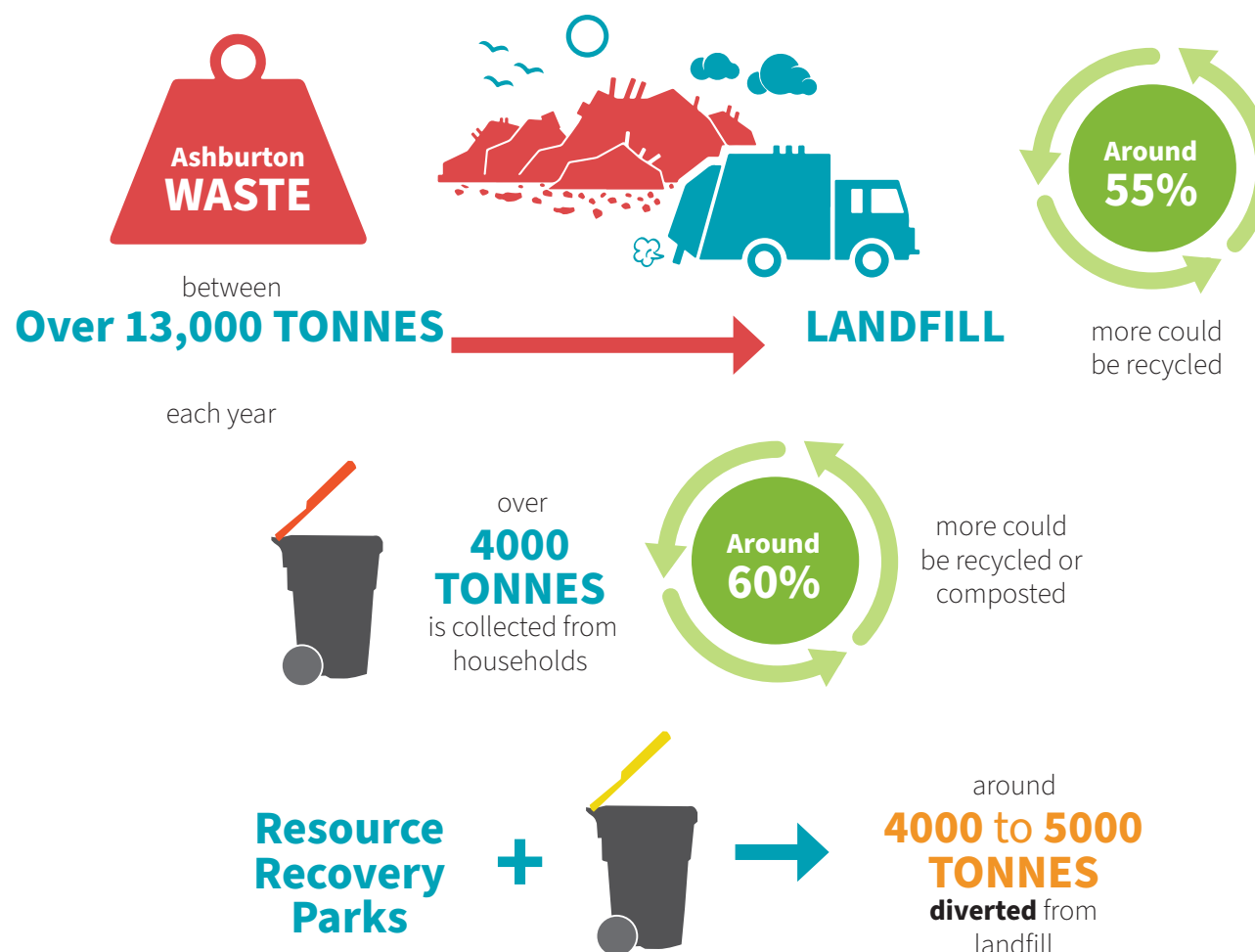
What is the current situation?

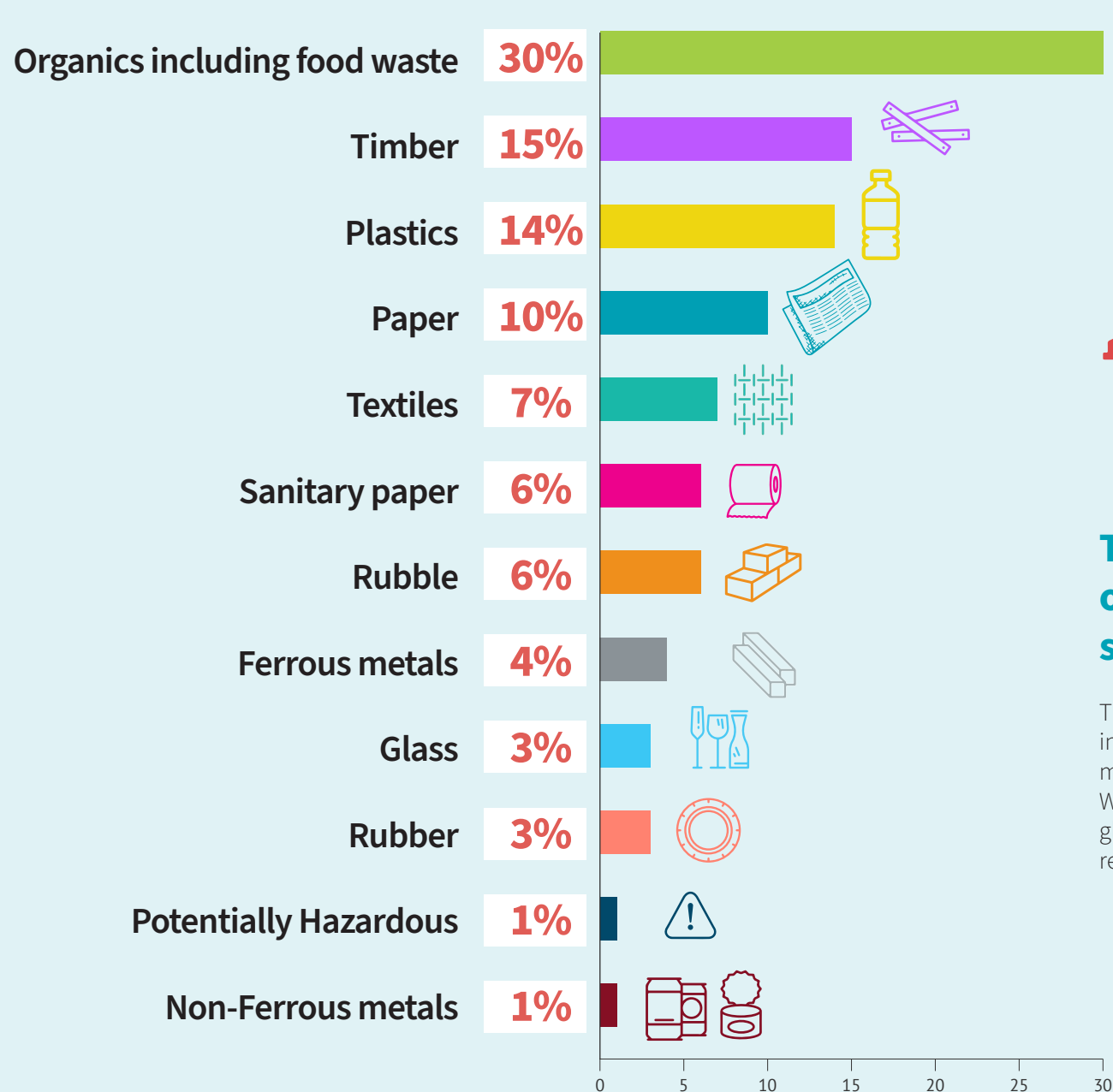
Ashburton currently sends over 13,000 tonnes of waste to landfill each year.

This mostly comes from kerbside waste collections, the construction and demolition sector, and industrial or commercial operations. Around 55% of this could be recycled, reused, or recovered in some way.

Over 4000 tonnes of this waste is collected from households at the kerbside. Although this material hasn't been directly surveyed, it is likely that around 60% could be recycled or composted.

Around 4000 to 5000 tonnes is diverted from landfill each year, largely through kerbside recycling and collection of green waste and recycling at our Resource Recovery Parks.





This chart shows the types of materials our district sends to landfill.

The largest single category is organic waste, which includes both food and garden waste. Most of this material could be recovered for composting. We also throw away lots of plastic, paper, metal, glass and timber which could potentially be recycled or recovered in some way.

Key issues

We assessed all aspects of waste management across our district and found we could be more efficient and effective in these key areas:



A significant proportion of waste going to landfill is **organic waste**, particularly food waste from households



Some **construction and demolition waste** is managed locally through incineration without energy recovery



Businesses could divert more recyclables, particularly cardboard



Improving the management of **construction and demolition, industrial, commercial and institutional waste**, requires the Council, community and private sector to work together



Rural waste streams, such as waste from rural households and farms, is poorly understood and may benefit from more proactive measuring and management by Council



Charges at the Resource Recovery Parks may need to be reviewed to encourage customers to sort their waste and make more use of the available options

How will we do this?

We know that we can't solve all of these issues on our own.

So, our role is to facilitate and manage a range of programmes and interventions to achieve effective and efficient waste management and minimisation within the district.

We propose to do this by:

ACTION AREA	KEY ACTIONS	ISSUES ADDRESSED AND WHAT IT WILL DO
Collections	Introduce a household kerbside food waste collection, and extend the service to businesses on a user-pays basis. If the community supports this, we'll investigate further and report back with more detail on how the service would operate, most likely during consultation on our 2024 Long Term Plan.	Diverting household food waste from landfill is the single biggest opportunity to increase diversion rates and decrease greenhouse gas emissions
	Work with Council's contractor and other providers to encourage uptake of green waste collections	Diverting green waste from landfill is another key opportunity to increase diversion while reducing greenhouse gas emissions
	Work with Council's contractor to introduce a user-pays on-property collection of reusable items	This will supplement the reuse centre already in place at the Ashburton Resource Recovery Park
	Extend Council's household kerbside recycling collection to businesses on a user-pays basis	There will be many businesses that only need this level of regular recycling service, and this is an efficient way to provide it.
	Establish a working group with waste companies and businesses to facilitate improved and targeted services	Provide targeted services to various business sectors including construction & demolition, farms and industry
Infrastructure	As planned, provide a transfer station to Methven	Accommodates demand in the area
	Continue to develop and improve the ARRP as the key facility for the district	Maintain existing levels of service and accommodate future demand
	Revise charges at the ARRP on an ongoing basis	Ensure that charges are designed and are set at levels such that preferred waste management behaviours are encouraged

How will we do this?

How will we pay for these?

In other districts, food waste collection is costing about \$50 per household per year (around \$1 per week). We expect it would be the same here, but we'll be investigating this further.

Costs for other proposals will also be looked at during the investigation phase. When the Plan is adopted by Council, the actions will be included into our Long-Term and Annual Plan to ensure that we have the resources to deliver on our goals.

ACTION AREA	KEY ACTIONS	ISSUES ADDRESSED AND WHAT IT WILL DO
Education, Engagement, Communications	Maintain existing levels, and carry out one-off campaigns where necessary such as a new service, or significant service change.	Ensure community is engaged and understands service decisions; and are able to make the most of existing and any new or altered services
Regulation	Implement the solid waste management and minimisation bylaw, requiring operators to be registered	Maintain an even playing field for industry, and collect data to enable better planning
Leadership and Management	Continue to work regionally, lobby central government, and support and work with local community initiatives	Various issues such as extended producer responsibility cannot be addressed at a council level; however Council can lobby central government. Closer community working will ensure understanding and support of Council's plans.
Data	Collect data externally through registration (enabled by the bylaw) and regular surveys. Continue recording and analysis of internal data to enable performance monitoring over time.	Consistent, high quality data will help us track our progress.

Give us your feedback at
ashburtondc.govt.nz/haveyoursay

What happens next?

Project Timeline



Give us your feedback at
ashburtondc.govt.nz/haveyoursay

Have your
Say!



Have your
Say!

**Your feedback will help us
to know whether we are
on the right track with the
proposed plan.**

Please note all submissions are public documents and will be made available on Council's website with the names of submitters included.

Submissions presented in the form of a petition or accompanied by multiple signatures will be processed as a single submission.

**The easiest way to provide your feedback is to complete the form online
at ashburtondc.govt.nz/haveyoursay**

Alternatively, you can provide feedback by filling in the attached submission form and getting it back to us using one of the following methods:



FREEPOST TO

Ashburton District Council
Our Place
Freepost 230444
PO Box 94
Ashburton 7740



EMAIL TO

submissions@adc.govt.nz



HAND IN TO

Council reception, Baring Square West

Draft Waste Management & Minimisation Plan 2022

Our Place: Our Waste – Managing it responsibly
Consultation Document

Have your
Say!

1

We are proposing to introduce household kerbside food waste collection. Other districts have done so at a cost of about \$50 per household per year. Would you support a kerbside food waste collection service being implemented?

☐ Yes ☐ No Why?

2

Do you agree with the key issues in the draft Plan? Which issues do you agree or disagree with?

☐ Yes ☐ No Why?

**Please note all submissions are public documents and will be made available on Council's website.*

Submissions presented in the form of a petition or accompanied by multiple signatures will be treated as a single submission.

FOLD HERE

Your details

First name: _____ Last name: _____

Organisation (if appropriate): _____

Street number: _____ Street name: _____

Suburb / Town / RD: _____ Postcode: _____

Phone: _____ Email: _____

Do you wish to speak in support of your submission at the hearing?

(If no boxes are ticked, it will be considered that you do not wish to be heard)

☐

Yes: The hearing will be held in the Council Chamber on Thursday, 6 July, 2022. Please note that hearings are live-streamed to our online channels.

☐

No: I do not wish to speak in support of my submission and ask that the following written submission be fully considered.

I intend to present: ☐ In Person ☐ Virtually

Signature: _____

Date: _____

The full Draft Waste Management & Minimisation Plan is available from ashburtondc.govt.nz/haveyoursay

You can submit on any or all of the questions below. You don't have to complete every question.

3 Do you agree with the proposed actions in the draft Plan? Which actions do you agree or disagree with?

☐ Yes ☐ No Why?

4 Do you have any other comments?

We are accepting feedback until 5pm, Thursday 23 June, 2022.

FOLD HERE

