

# Three Waters Committee

## AGENDA

---

### **Notice of Meeting:**

A meeting of the Three Waters Committee will be held on:

**Date:** Wednesday 11 February 2026

**Time:** 10.00am

**Venue:** Hine Paaka Council Chamber, Te Whare Whakatere  
2 Baring Square East, Ashburton

### **Membership**

Chairperson Russell Ellis

Deputy Chairperson Phill Hooper

Members Carolyn Cameron  
Deb Gilkison  
Phill Everest  
Mayor Liz McMillan (ex-officio)

## Three Waters Committee

<b>1</b>	Apologies	
<b>2</b>	Extraordinary Business	
<b>3</b>	Declarations of Interest	
<b>4</b>	Confirmation of Minutes – 19/11/25	<b>3</b>
<b>5</b>	<b>Three Waters Operations</b>	
5.1	Operational status of schemes	<b>5</b>
5.2	Issues arising	<b>5</b>
<b>6</b>	<b>Projects</b>	
6.1	Drinking water project status	<b>6</b>
6.2	Drinking water projects commentary	<b>6</b>
6.3	Wastewater project status	<b>8</b>
6.4	Wastewater project commentary	<b>8</b>
6.5	Stormwater project status	<b>9</b>
6.6	Stormwater projects commentary	<b>10</b>
6.7	Asset management project status	<b>10</b>
6.8	Asset management projects commentary	<b>10</b>
<b>7</b>	<b>Drinking Water Compliance</b>	
7.1	Overview – <i>refer Appendix A</i>	<b>10</b>
7.2	Drinking water compliance commentary	<b>10</b>
7.3	Drinking water quality assurance rules – proposed changes	<b>10</b>
<b>8</b>	<b>RMA Consents Compliance</b>	
8.1	Overview – <i>refer Appendix B</i>	<b>11</b>
8.2	RMA consents compliance commentary	<b>11</b>
8.3	Wastewater Standards	<b>11</b>
<b>9</b>	<b>Financials</b>	
9.1	Overview – <i>refer Appendix C</i>	<b>12</b>
9.2	Commerce Commission Levies	<b>12</b>
9.3	Operational income	<b>12</b>
9.4	Operating expenditure	<b>13</b>
9.5	Capital income	<b>13</b>
9.6	Capital expenditure	<b>13</b>
<b>10</b>	<b>Procurement</b>	
10.1	Active Tenders / Pricing	<b>14</b>
10.2	Contracts Awarded	<b>14</b>
<b>11</b>	<b>Water Services Delivery Plan – Implementation</b>	
11.1	Progress update	<b>14</b>
11.2	Next steps	<b>15</b>
<b>12</b>	<b>Photo Gallery</b>	<b>15</b>

### 4. *Three Waters Committee – 19/11/25*

Minutes of the Three Waters Committee meeting held on Wednesday 19 November 2025, commencing at 1:00pm, in the Hine Paaka Council Chamber, Te Whare Whakatere, 2 Baring Square East, Ashburton.

#### **Present**

Mayor Liz McMillan; Councillors Russell Ellis (Chair), Phill Hooper, Carolyn Cameron, Deb Gilkison and Phill Everest.

Also present: Crs Richard Wilson, Tony Todd, Jeanette Maxwell, Julie Moffett.

#### **In attendance**

Hamish Riach (Chief Executive), Neil McCann (GM Infrastructure), Tania Paddock (GM Legal & Democracy) Andrew Guthrie (Assets Manager), Hernando Marilla (Operations Manager), Ulrich Glasner (Water Services Manager) and Heather Stoddart (Governance Support).

#### **1 Apologies**

Cr Phill Everest (lateness)

Sustained

#### **2 Extraordinary Business**

Nil.

#### **3 Declarations of Interest**

Nil.

*Cr Everest arrived at 1:06pm*

#### **4 Three Waters Operations**

Introduction of officers involved in Three Waters and a discussion on the structure of the team.

A slide showing the organisational structure of the In-House Business Unit (IBU) from the Water Services Delivery Plan was shown to provide a visual context of the Local Water Done Well framework, including external and internal partners and governance.

#### **Matters arising**

- It was noted that the lightning strike at the Methven water treatment plant was a strike into the ground (not the actual plant) which hit the cable underground, which feeds into the switchboard, causing damage. Officers are looking into resilience and minimising the risk of this happening again. Going forward, will ensure there are spare parts kept on-site.

#### **5 Projects**

##### **• Drinking water project commentary**

*Advanced water metering trial* – officers have discussed the work being undertaken with Intellihub in sourcing and installing the water meters, which will provide real time water monitoring of water usage for operational benefits. There is currently no intention to use metering for charging purposes.

- **Wastewater project status**

*Wetland top channel improvements* – Treated effluent gravity feeds from Wilkins Rd through to Ocean Farm. Improvements will allow a better understanding of routine and bypass flows. The wetland itself is going to be looked at as part of the Wastewater Strategy.

*Continuous Nitrate Monitoring* – (Ocean Farm currently not compliant) - installing a nitrate probe in top channel to better understand the nitrogen loading on the land.

- **Stormwater project status**

Assessment of higher risk properties discharging stormwater to Ashburton network. GIS tool will allow this assessment to be done without having to get an external service provider every time.

## **6 Drinking Water Compliance**

- **Montalto Water Supply Trial**

Officers are waiting for the costing of the installation and hoping that it will be installed prior to Christmas. Main issue is the backflow prevention and ensuring contamination isn't drawn into the water supply scheme. Solution needs to be pragmatic.

## **7 RMA Consents Compliance**

- It was confirmed that the non-compliance reported in Appendix B refers to wastewater irrigation at Ocean Farm, and the nitrogen loading rates being exceeded.

## **8 Financials**

- There should be no difference between the WSDP and the Annual Plan and if there is, it would be work needed over and above the WSDP. The AP for water is considered as already done. The WSDP is the approved budget for the AP. Charges for 3 Waters Services shows a 12% increase already approved by previous Council. There will be differences between year 3 of the LTP against the updated AP. Urge all members of the committee and Councillors to become familiar with our WSDP which is on our website.
- Capital expenditure is 54% and capital income is \$0, which won't be picked up till the end of the year as they are through loans.
- The breakdown of debt levels by activity will be shown in the financial report to the Audit & Risk Committee.
- 3Waters must be clearly ring-fenced and separated from other Council spending. The focus will be on getting the independent business unit set up to ensure Council is delivering to the Commerce Commission's requirements.

The meeting concluded at 1:54pm.

## 5. 3 Waters Operations

### 5.1. Operational Status of Schemes

Activity	Location	Status	Activity	Location	Status
Water Supply	Ashburton	■	Wastewater	Ashburton	■
	Chertsey	■		Methven	■
	Dromore	■		Rakaia	■
	Hakatere	■			
	Hinds	■	Stormwater	Ashburton	■
	Mayfield	■		Methven	■
	Methven / Springfield	■		Rakaia	■
	Montalto	■		Hinds	■
	Mount Somers	■			
	Rakaia	■			

**KEY:**

■ - Normal operations; ■ - Minor or localised LOS issues during period; ■ - Major or widespread LOS issues during period.

### 5.2. Issues Arising

#### Methven Water Supply

- A problem with the control system at the Methven water treatment plant occurred on 10 January 2026 around 7:00 am causing the reservoirs to drop to critical levels. Plant operators did not receive the critical alarms that should have enabled them to respond to issues that stop the plant operating properly. The proximate cause of this issue is the failure of a PLC analogue input card at the plant, causing almost all signals to flatline and therefore the treatment process to shut down.
- The issue appears to be related to a previous incident on the 23rd of October 2025, where a presumed lightning strike damaged multiple electrical items (reservoir level transmitters, flowmeters and temperature instruments) and PLC input cards.
- The January incident was not discovered until no water alarms on the water quality pillars activated and calls from the public were received.
- A notice to conserve water was immediately issued while the contractors carried out the necessary repairs. Water supply was restored at 11:00am and the conserve water notice was lifted. The duration of the loss of water for Methven town was approximately 3 hours.

#### Chertsey Water Supply

- At approximately 07:10 am on 9 January 2026, the operator reported that the Chertsey WTP reservoir level was displaying 0% on the HMI with no associated alarms or fault indications.
- Investigation identified a software/control logic fault within the PLC/HMI system. The HMI fault reset button had become locked in the active state, causing the reset logic to be continuously applied. As a result, the chlorine alarm was automatically reset on every PLC scan cycle, preventing any persistent alarm indication from being displayed. This behaviour masked the underlying process condition, allowing the reservoir level to reach a critically low state without operator awareness.

- The issue was resolved around 9:30 am on the same day. A conserve water notice was issued to allow the reservoir level to recover. Service was back to normal before 12:00 noon.
- To ensure that the same issue does not occur in the future, a software modification was implemented within the PLC program to address the root cause.

## 6. Projects

### 6.1. Drinking Water Project Status

Project	Provider	Completion Date		Status
		Forecast	Actual	
Dromore WTP UV/Filtration Upgrade	ARC Projects Ltd	31/03/2026		■
Ashburton - Argyle Park WTP UV Upgrade	ARC Projects Ltd	29/08/2025	29/08/2025	■
Ashburton, Tinwald WTP UV Upgrade	Ashburton Contracting Ltd	28/02/2026		■
Chertsey WTP UV/Filtration Upgrade	Ashburton Contracting Ltd	28/02/2026		■
Ashburton - Domain WTP UV Upgrade	Ashburton Contracting Ltd	19/12/2025		■
Ashburton - Bridge St WTP UV Upgrade	ARC Projects Ltd	19/12/2025	31/10/2025	■
Rakaia WTP UV Upgrade	Ashburton Contracting Ltd	28/02/2026		■
2025/26 Water Pipeline Renewals	Rooney Earthmoving Ltd	20/05/2026		■
2025/26 Rural Water Pipeline Renewals	Fulton Hogan Ltd	05/12/2025		■
Source Water Risk Management Plans	Internal	31/12/2026		■
NE Ashburton Watermain Extensions	Internal	31/03/2026		■
Backflow Investigations & Implementation	Internal	BAU		■
Advanced Water Metering Trial	Intellihub Ltd	TBC		■
Installation of Smart Meters - Rakaia	Ashburton Contracting Ltd	28/02/2026		■
Installation of Zone Flow Meters - Rakaia	ARC Projects Ltd	31/03/2026		■
Annual Drinking Water Laboratory Audit	IANZ	30/09/2025	30/09/2025	■
Assessment of Communities' Access to Drinking Water	TBC	30/06/2026		■
Tinwald Bore Feasibility Assessment	Aqualinc Ltd	28/02/2026		■

**KEY:**

■ – On track/complete; ■ – Minor scope, budget or programme impacts; ■ – Major scope, budget or programme impacts.

### 6.2. Drinking Water Projects Commentary

#### Dromore WTP UV/Filtration Upgrade

- The lengthy process to procure the land where the Dromore Water Treatment Plant is to be sited has delayed the commencement of the project.
- The project started June 2025, and It is expected that the upgraded plant will be commissioned by end of February 2026 with all work complete on or about 31 March.

**Ashburton, Tinwald WTP UV**

- All work is complete on this project. The contractor has applied for practical completion but has not yet supplied all necessary quality assurance documentation.
- This is now expected to be provided in February.

**Chertsey WTP UV/Filtration Upgrade**

- All work is complete on this project. The contractor has applied for practical completion but has not yet supplied all necessary quality assurance documentation.
- This is now expected to be provided in February.

**Ashburton - Domain WTP UV Upgrade**

- Work at this site is continuing. The UV has been validated and is operational.
- Awaiting confirmation of a forecast completion date from contractor.

**Rakaia WTP UV Upgrade**

- All work is complete on this project. The contractor has applied for practical completion but has not yet supplied all necessary quality assurance documentation.
- This is now expected to be provided in February.

**2025/26 Rural Water Pipeline Renewals**

- The majority of work has been completed on this contract. There is a minor section on the Dromore pipeline renewals that has not been completed due to delays associated with access approvals from KiwiRail.
- Officers are sympathetic to the contractor in this instance. Gaining all necessary approvals from KiwiRail is a challenging, lengthy process, and it is therefore difficult to forecast a completion date for this work at this point.
- It is understood the final approvals came through on or about 28/01/26.

**Source Water Risk Management Plans**

- Work commenced on these plans late last year and will continue throughout 2026.

**Assessment of Communities' Access to Drinking Water**

- Under the Local Government (Water Services) Act 2025, Council is required to undertake an assessment of Communities' access to drinking water.
- The requirements of the assessment are described in detail in the legislation available [here](#).
- The first assessment must be completed by 30 June 2026.
- Officers are currently planning how the work will be completed to meet the legislative deadline within the current workload. It is anticipated the assessment will need to be outsourced.

**Tinwald Bore Feasibility Assessment**

- In 2024, Aqualinc Ltd were engaged to assess groundwater quality and nitrate trend data to determine the timeframes when the Tinwald bore might exceed the NZDWS maximum allowable value (MAV) for nitrate. This work indicated that the timeframe is likely to be between the years 2029 and 2033.

- The work also concluded that deeper aquifers showed lower nitrate levels and a slower increasing trend than shallower aquifers. The nitrate trend in deeper aquifers is such that nitrate levels may remain under the MAV for decades to come.
- Aqualinc have been engaged most recently to provide advice on the likely yields from deeper aquifers at the Tinwald site. The work will include:
  - Review of the geological and hydrogeological context
  - Completion of an aquifer yield assessment
  - Consideration of well interference and consent considerations
- This information will assist in supporting a potential future project to deepen the existing bore or drill a new bore in proximity to the Tinwald WTP.

### 6.3. Wastewater Project Status

Project	Provider	Completion Date		Status
		Forecast	Actual	
Rakaia WWTP Control Panel Upgrade	Kinetic Electrical Ltd	27/02/2026		■
2025/26 Wastewater Pipeline Renewals	Tru-Line Civil Ltd	05/12/2025		■
Methven WWTP Aerators Renewal	Aeris Global Ltd	31/03/2026		■
Methven WWTP Screen Renewal	ARC Projects / Brown Bros	30/04/2026		■
NE Ash Wastewater Servicing Concepts	Beca Ltd	05/02/2026		■
Ocean Farm Connectivity Upgrade	ConnectM2M Ltd	22/08/2025	22/08/2025	■
Wilkins Rd WWTP MBBR Installation	TBC	01/07/2027		■
Ocean Farm – Pole Mounted Sprinkler Trial	Rainer Irrigation Ltd	TBC		■
Faecal Source Tracking <sup>1</sup>	ESR	31/10/2025	25/11/2025	■
District Wastewater Strategy <sup>1</sup>	WSP Ltd	31/12/2026		■
Installation of Ocean Farm Flow Meters <sup>1</sup>	TBC	31/03/2026		■
Wetland Top Channel Improvements <sup>1</sup>	ConnectM2M Ltd	28/02/2026		■
Continuous Nitrate Monitoring <sup>1</sup>	ConnectM2M Ltd	31/03/2026		■

**KEY:** ■ – On track/complete; ■ – Minor scope, budget or programme impacts; ■ – Major scope, budget or programme impacts.

### 6.4. Wastewater Projects Commentary

#### Rakaia WWTP Control Panel Upgrade

- The Rakaia WWTP Project was not completed in December due to unforeseen site constraints. During construction of the concrete slab, existing underground water and electrical services were found to be much closer to the building than indicated on the old as-built drawings. This required the relocation of the new switchboard position to carry out the extra work safely.
- Additionally, due to the end-of-year shutdown period, the contractors were unavailable to complete the required works before Christmas.

<sup>1</sup> Project committed as part of the Ocean Farm Action Plan.



## 2025/26 Wastewater Pipeline Renewals

- The Catherine Street pipeline renewal was paused at Council request to allow investigation and confirmation of pipe diameter. This confirmation was being done as part of network modelling undertaken under the WW Strategy.
- The diameter has now been confirmed and is proposed to be upsized as part of the renewal. Officers are confirming with the contractor the cost of the upsizing and impact on original contract completion date.

## NE Ash Wastewater Servicing Concepts

- This report was reviewed by officers toward the end of last year. Beca has been asked to update the report to reflect the officers review comments. It is expected to be finalised early February.
- It is now proposed to incorporate the findings of this work into the wider Ashburton District Wastewater Strategy.

## AMP Tradewaste Agreement & Mitigation (Wilkins Rd WWTP MBBR Installation)

- AMP were advised of Council's approval of the funding agreement on 25 September 2025. The signed funding agreement was received from AMP on 23/01/26 for signing by Council's GM Infrastructure. This has now been completed and an invoice generated for the first of two payments of \$2,750,000 +GST.
- As a result of the delay in AMP signing the agreement, Council has formally advised of a 3-month delay. This formal advice effectively amends the original completion date (01/04/27 to 01/07/27).
- In anticipation of this funding becoming available, preliminary work has commenced on identifying support (professional services) for this project. The procurement of the Moving Bed Biological Reactor (MBBR) plant is expected to be a design build project, however given the cost scale and criticality of the project, Council will need specialist engineering assistance and advice to ensure the right outcomes are achieved.

## Wetland Top Channel Improvements & Continuous Nitrate Monitoring

- There has been a number of delays with this work. The contractor has now confirmed that all hardware for the flow measurement and weir level upgrades has arrived and awaiting a window of fine weather to install the equipment. This is now expected to be completed in February.
- The nitrate sensor that was originally supplied for this project was not suitable for wastewater and a replacement sensor has been ordered. Delivery of this sensor is by end of February with installation programmed for March.

## 6.5. Stormwater Project Status

Project	Provider	Completion Date		Status
		Forecast	Actual	
Industrial Sites Stormwater Risk Prioritisation	Beca Ltd	31/10/2025	14/10/2025	■

**KEY:** ■ – On track/complete; ■ – Minor scope, budget or programme impacts; ■ – Major scope, budget or programme impacts.

## 6.6. Stormwater Projects Commentary

### Industrial Sites Stormwater Risk Prioritisation

- This project was completed in October last year. The final deliverable - a GIS tool was provided in January<sup>2</sup>.

## 6.7. Asset Management Project Status

Project	Provider	Completion Date		Status
		Forecast	Actual	
Network Environmental Performance Reporting	Internal	30/09/2025	30/09/2025	■

**KEY:** ■ – On track/complete; ■ – Minor scope, budget or programme impacts; ■ – Major scope, budget or programme impacts.

## 6.8. Asset Management Projects Commentary

No matters to note.

# 7. Drinking Water Compliance

## 7.1. Overview

Please refer to the summary table in [Appendix A](#).

## 7.2. Drinking Water Compliance Commentary

The overview report shows the compliance status of Council operated supplies for the 2025 calendar reporting year. This report should be regarded as provisional at this time. It has been assembled from the last quarter reporting only. It is anticipated the final 2025 report should be available for the March meeting of the committee.

There is a slight reduction in compliance in Ashburton (67% to 65%). This has arisen due to bores being offline during the construction and commissioning of the new UV equipment. This meant compliance testing on those bores could not be completed during the period they were offline.

There is a slight lift in compliance for Hinds (67% to 68%). This reflects the new plant being commissioned and operating through the last quarter.

Note:- As part of recent consultation, TA is proposing to change the reporting year to 1 July – 30 June period. Officers support this change, and if it proceeds, it will commence from 1 July 2027.

## 7.3. Drinking Water Quality Assurance Rules – Proposed Changes

On 10 November, Taumata Arowai opened consultation on proposed changes to the Drinking Water Quality Assurance Rules for supplies serving 501 or more people. These rules are relevant to this Council for the Ashburton, Methven and Rakaia water supplies.

TA's aim with the proposed changes is to:

- make legal responsibilities clearer and easier to understand
- simplify and standardise testing and reporting requirements

---

<sup>2</sup> The delay in providing the last deliverable was at officer request.

- match treatment levels to the level of source water risk while maintaining strong public health protections.

The changes are largely technical in nature and too numerous to detail adequately here. Officers reviewed the [consultation document](#) and provided a submission by the due date (19 December). For the most part officers are in support of the changes. A copy of the officer submission has been made available to the committee members separately.

## 8. RMA Consents Compliance

### 8.1. Overview

Please refer to the summary table in [Appendix B](#).

### 8.2. RMA Consents Compliance Commentary

The majority of consents held by ADC are compliant.

We received three new compliance monitoring reports (CMR) since the last committee meeting.

- CRC0031003 Wilkins Rd WWTP, discharge contaminant to air. This consent was assessed as **compliant**.
- CRC093639 Ocean Farm WWTP, discharge contaminant to land. This consent covers overflows from the storage pond and was assessed as **compliant** in a CMR dated 16/01/26.
- CRC186263 Ashburton Stormwater Network, discharge stormwater to land. This consent was previously assessed non-compliant action required due to a delay submitting the Industrial Sites Assessment. This has now been submitted. The CMR (dated 17/12/25) has downgraded the assessment to **non-compliant no action required**.

There is one consent with an existing assessment of **non-compliant action required**.

- CRC031000.1 Ocean Farm WWTP, discharge to land. This consent covers the operation of the overflow weir structure at the top of the wetland. The non-compliance relates to exceedances of the overflow limits.

There is one consent with an existing assessment of **significant non-compliance**.

- CRC030999.1 Ocean Farm WWTP, discharge contaminant to land. As reported previously this is due to: uncompleted wetland renovation projects; effluent quality reporting exceedances; the evenness of the land discharge & exceedances of the nitrogen loading rate; and the control system does not record the time and volumes discharged to each irrigation block.

These non-compliances are being managed through the actions set out in the Ocean Farm Action Plan, with approval of Environment Canterbury. Refer to projects section for progress on current actions.

### 8.3. Wastewater Standards

Taumata Arowai's new National Wastewater Environmental Performance Standards became law on 19 December 2025. This has been achieved through enacting the Water Services (Wastewater Environmental Performance Standards) Regulations 2025.

The wastewater standards determine what kind of treatment is needed before wastewater can be released into the environment. The rules vary depending on how sensitive the local environment is. In areas that are more sensitive, stricter treatment is required. In areas where the risk to the environment or public health is lower, the treatment requirements are less strict, which is expected to keep costs down.

A single page summary sheet on the Wastewater Standards is available [here](#). The regulations can be viewed in their entirety [here](#).

Note:- The Ashburton District Wastewater Strategy being developed by WSP Ltd at present will consider the implications of the wastewater standards and the wider legislative context on any future new or upgraded infrastructure that might be identified.

## 9. Financial

### 9.1. Overview

Please refer to the summary report in [Appendix C](#).

The budgets in the report are from the Forecast Ledger which comprises annual budgets as approved at 1 July 2025, plus any carryovers approved by Council on 17 September 2025.

### 9.2. Commerce Commission Levies

The Commerce Commission has confirmed its levy structure on 27 November to fund its activities relating to the economic regulation of water services. For Ashburton District, the estimated amount for the three years commencing 1 July 2025 is \$45,231 + GST/annum.

### 9.3. Operating Income

#### Drinking Water

- **Group Water** is very close to budget overall. This position is masking slightly higher than budgeted income from development contributions and lower than budgeted income from sales through water meters. The main factor is a delay in water billing for the second quarter of the financial year. This is a timing issue only.
- The income for the other drinking water cost centres (including **Montalto**) is on track.

#### Wastewater

- **Ashburton** is currently ahead of the YTD budget. A key factor is that annual trade waste consent fees have been received whereas the budgeted income for this item was loaded as a 12-months spread, so is therefore a timing issue. The budget spread has been addressed during preparation of the 2026/27 annual plan.
- There is also a favourable variance in the fees<sup>3</sup> line item. Too early to predict if this will trend through to year end.
- **Methven** and **Rakaia** are above and below the YTD budget respectively. In both cases the cause is the targeted rates line item. This is anticipated to be a timing issue.

#### Stormwater

- Income for all areas sitting on or close to budget.

---

<sup>3</sup> For septage disposal at Wilkins Road WWTP.

## 9.4. Operating Expenditure

### Drinking Water

- **Group Water** is very close to budget overall. This position is masking a YTD unfavourable variance of ~\$179k in the maintenance contracts line item. This is currently offset by favourable YTD variances in other line items (primarily the interest line item).
  - The budgets for the maintenance contract are very difficult to predict due to the large reactive works component of the activity. Some of this reactive works includes repairs arising from recent leak detection works.
- Montalto water supply is tracking slightly below budget (~\$18k) at the mid-year point.

### Wastewater

- The YTD unfavourable variance in this area is solely in the **Ashburton** cost centre, with the key drivers being Maintenance Contracts (~\$186k) and Electricity (~\$84k). These can be quite variable from month to month, but officers will continue to monitor closely.
- Methven is very close to budget (\$4k over) and Rakaia is ~\$55k below the YTD budget.

### Stormwater

- All of the urban stormwater areas are either very close to, or below, the YTD budgets.

## 9.5. Capital Income

Capital income typically only appears when loans are drawn down. Generally, this will occur toward the end of the financial year.

## 9.6. Capital Expenditure

### Drinking Water

- The **Group Water** capital spend is well ahead of the YTD budget. This is due in part to the key physical works projects actively underway on 1 July, (i.e. work on carryover projects) but also partly due to the early tendering and award of the current years works which have also commenced early.
- It is anticipated that all projects will be completed by year end, and due to very competitive tendering there will be a favourable variance. This is tentatively forecast at ~\$1.82M at this stage.

### Wastewater

- Expenditure in **Ashburton** is behind YTD budget and **Methven** close to YTD budget. This is mostly due to the pipeline renewals contractor (Tru-Line Civil Ltd) programming the Methven work sites before the Ashburton sites.
- It is anticipated that all projects will be completed by year end, and due to very competitive tendering there will be a favourable variance. This is tentatively forecast at ~\$540k at this stage.

### Stormwater

- There has been no expenditure on the stormwater capital projects. A Stormwater Engineer joined the 3 Waters team on 1 December. It is anticipated the new dedicated resource will drive progress of the stormwater capital programme.

## 10. Procurement

### 10.1. Active Tenders / Pricing

A list of the contracts or other works currently out for tender or pricing (including those that have recently closed but not yet awarded) is set out in Table 1.

Contract or Item Name	Closing Date
No work is currently being priced.	N/A

Table 1 - Contracts or other items currently being tendered/priced or pending award. [For moderate and high expenditure].

### 10.2. Contracts Awarded

A list of contracts or other works awarded during the reporting period is set out in Table 2.

Contract or Item Name	Awarded to	Value	Budget	Tenders received	TTM
Advanced Water Metering Trial Rakaia	Ashburton Contracting Limited	\$246,567.45	Unbudgeted <sup>4</sup>	2	\$34,284
Installation of Zone Flow Meters at Rakaia WS	Arc Projects Limited	\$74,388.61		3	\$2,069
Installation of Zone Flow Meters at Ocean Farm	Ashburton Contracting Limited	\$377,756.14	Unbudgeted <sup>5</sup>	4	\$Nil
Pole Mounted Sprinklers Trial at Ocean Farm	Rainer Irrigation	\$36,624.00		1	\$Nil
Methven WWTP Inlet Screen Renewal	Arc Projects Limited	\$165,233.38	\$307,500	4	\$Nil
Methven Aerators Renewal	Aeris Global Limited	\$216,082.28	\$186,038	1	\$Nil

Table 2 - Contracts or other items awarded. [For moderate and high expenditure].

## 11. Water Services Delivery Plan – Implementation

### 11.1. Progress Update

#### Resources

Recruitment for two of four new roles has been completed. The two new roles are a Data Analyst position within the Assets Team, and a Stormwater Engineer position in a newly created Development Engineering Team. This new team includes two existing roles (Development Engineer; and Water Services Technician) and reports directly to the Water Services Manager.

<sup>4</sup> These projects were not budgeted and have arisen due to a proposal from Intellihub Ltd to trial their metering technology. The installation work is being funded from forecast favourable variance in the Backflow Prevention project (~\$50k) and confirmed savings in the cyclic renewal area (\$2.09M).

<sup>5</sup> These projects were not budgeted and have arisen in response to ongoing non-compliances at Ocean Farm WWTP. The installation work is being funded from uncommitted funds (\$312k) in the reallocated wetland remediation budget, and favourable variances arising from the pipeline renewals tender (\$716k).

A meeting with the implementation team of Waimakariri District Council has been held end of January to share progress of the implementation of the In-House Business Units.

In December we received the template for the quarterly monitoring report to DIA which will be due in April 2026 for the period from 1 January until 31 March 2026.

### 11.2. Next Steps:

- Meetings set up with internal departments/ Group Managers to discuss next steps and supporting requirements.
- By the end of February, we expect to receive from the Commerce Commission the final requirements for Information Disclosure for all regulated suppliers.
- Development of an implementation plan.

## 12. Photo Gallery



**Domain WTP UV Upgrade**  
(Ashburton Contracting Limited)

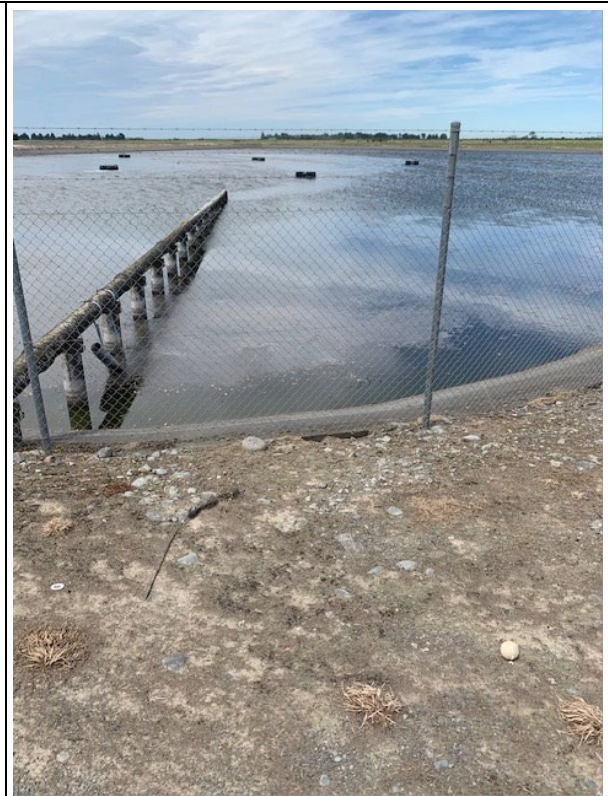


**Dromore WTP UV/Filtration Upgrade**  
(ARC Projects Limited)

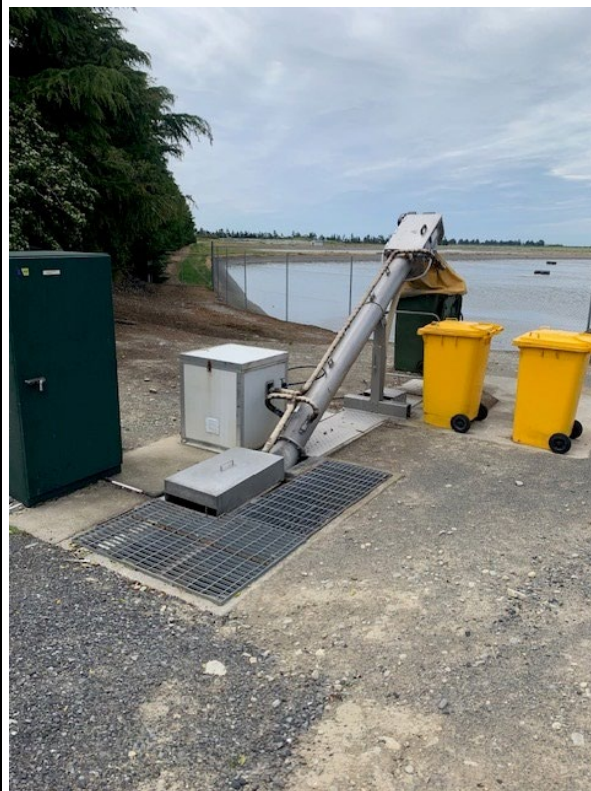




**Chalmers Avenue Watermain Renewal**  
(Rooney Contracting Limited)



**Methven WWTP Aerators Renewal**  
Existing aerators shown, to be replaced



**Methven WWTP Screen Renewal**  
Existing screen shown, to be replaced.



**Philip Street Service Lateral Repairs**  
(Ashburton Contracting Limited)





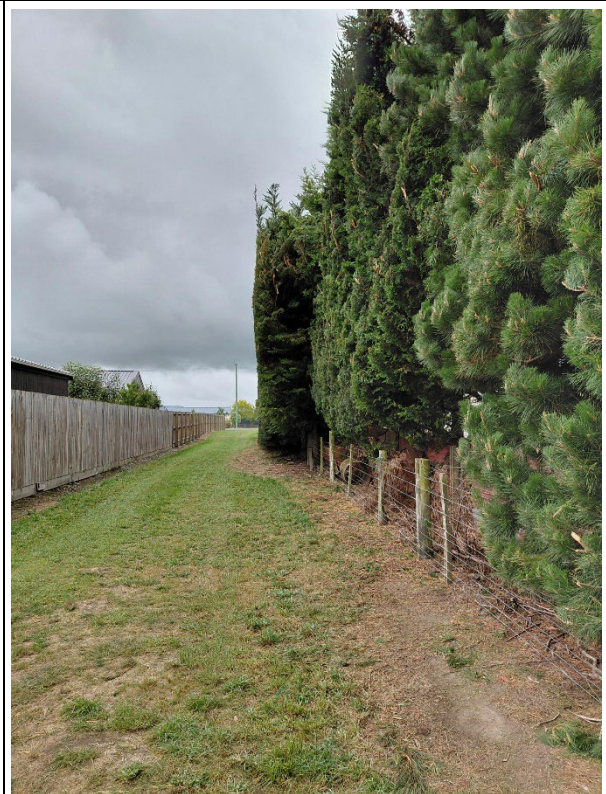
**Mill Ck Flood Relief Channel Maintenance - Before**



**Mill Ck Flood Relief Channel Maintenance - After**  
*(Four Seasons Limited)*



**Cawton Grove Stormwater Basin Access - Before**



**Cawton Grove Stormwater Basin Access - After**  
*(Four Seasons Limited)*





**Line Road Sewermain Renewal**  
(Tru-Line Civil Limited)



**Rural Watermain Renewals**  
(Fulton Hogan Limited)



**Water Quality Pillar – Allens Rd**



**Water Quality Pillar – Internals Front**





**Water Quality Pillar - Internals Rear**

## Appendix A

### ADC DRINKING WATER COMPLIANCE STATUS SUMMARY

Internal Assessment Against Drinking Water Quality Assurance Rules 2022 29 November 2024

Assessment Period - 2025 Full Year (1 Jan to 31 Dec 2025)

DWQARs Rule #	Rule Type	Compliance Period	Ashburton	Methven	Rakaia	Chertsey	Dromore	Hakatere	Hinds	Mayfield	Montalto	Mt Somers
General Rules (G Rules)	Assurance	Varies	53%	53%	53%	58%	58%	58%	58%	58%	58%	58%
Level 2 Source Rules (S2 Rules)	Varies	Varies	N/A	N/A	N/A	100%	100%	100%	100%	100%	79%	100%
Level 3 Source Rules (S3 Rules)	Varies	Varies	91%	88%	99%	N/A	N/A	N/A	N/A	N/A	N/A	N/A
Level 2 Treatment Rules (T2 Rules)	Varies	Varies	N/A	N/A	N/A	47%	46%	93%	49%	49%	57%	87%
Level 3 Treatment Rules (T3 Rules)	Varies	Varies	62%	61%	87%	N/A	N/A	N/A	N/A	N/A	N/A	N/A
Level 2 Distribution System Rules (D2 Rules)	Varies	Varies	N/A	N/A	N/A	91%	91%	91%	91%	91%	73%	91%
Level 3 Distribution System Rules (D3 Rules)	Varies	Varies	51%	44%	44%	N/A	N/A	N/A	N/A	N/A	N/A	N/A
Overall Average DWQARs Compliance			65%	72%	73%	67%	67%	87%	68%	68%	65%	84%

Result to Qtr 3

Overall Average DWQARs Compliance	67%	72%	73%	67%	67%	87%	67%	68%	65%	84%
-----------------------------------	-----	-----	-----	-----	-----	-----	-----	-----	-----	-----

[Return to DW Compliance Commentary](#)

## Appendix B

### ADC COMPLIANCE STATUS SUMMARY - FOR RMA ISSUED RESOURCE CONSENTS

#### Operational Consents\*

Consent Number	Activity	Scheme Network	Local Name	Date Granted	Expiry Date	No: of Conditions	Date last monitored by Ecan	Not Operational	Not Monitored	Unable to determine compliance	Compliant	Non-Compliant No Action required	Non-Compliant Action Required	Significant Non-Compliance	Overall Compliance	Reason
<b>Water Supply</b>																
CRC002108	Take & use groundwater	Methven Springfield	Methven Springfield Intake	30/01/2006	30/01/2041	9	11/09/2018	0	5	0	4	0	0	0	0	
CRC011923	Take & use groundwater	Methven	Methven Intake	08/08/2002	08/08/2037	6	19/10/2017	0	4	0	1	1	0	0	0	Take limit exceedance.
CRC022026	Take & use groundwater	Mt Somers	Mt Somers Intake	05/07/2022	15/07/2037	5	03/02/2021	0	3	0	2	0	0	0	0	
CRC041517	Take & use groundwater	Hinds	Hinds Bore	18/02/2004	18/02/2039	9	11/09/2018	0	5	0	4	0	0	0	0	
CRC050225.1	Take & use groundwater	Ashburton	Ashburton Bores	30/05/2011	26/11/2039	10	13/09/2017	0	6	0	4	0	0	0	0	
CRC051262.1	Take & use groundwater	Ashburton	Tinwald Bore	13/10/2011	26/11/2039	11	13/08/2019	0	9	2	0	0	0	0	0	
CRC052628	Take & use surface water	Montalto	Montalto Intakes	04/08/2010	04/08/2045	11	11/09/2018	0	9	0	2	0	0	0	0	
CRC120547	Take & use groundwater	Mayfield	Mayfield Bore	17/10/2011	17/05/2045	11	03/02/2021	0	8	0	3	0	0	0	0	
CRC164142	Take & use groundwater	Lake Hood	Lake Hood Bore	26/11/2015	18/03/2037	6	NM									
CRC170019	Take & use groundwater	Dromore	Dromore Bore	29/07/2016	29/07/2051	15	13/08/2019	0	13	2	0	0	0	0	0	
CRC231924	Discharge contaminant to land	Methven	Methven WTP	15/03/2023	24/03/2058	22	23/04/2025	3	2	0	17	0	0	0	0	
CRC231934	Discharge contaminant to land	Mt Somers	Mt Somers WTP	14/03/2023	14/03/2058	23	23/04/2025	3	2	0	18	0	0	0	0	
CRC244450	Take & use groundwater	Rakaia	Rakaia Bores	29/04/2009	29/04/2044	12	NM									
CRC244645	Discharge contaminant to land	Various	Water Treatment Plants	31/07/2024	31/07/2059	17	NM									
CRC980747.1	Take & use groundwater	Fairton	Fairton Bore	15/03/2010	03/12/2032	4	03/02/2021	0	2	0	2	0	0	0	0	
CRC991485	Take & use groundwater	Hakatere	Hakatere Bore	07/04/1999	07/04/2034	6	13/09/2018	0	4	2	0	0	0	0	0	
CRC991612	Take & use groundwater	Chertsey	Chertsey Bore	04/03/1999	04/03/2034	5	03/02/2021	0	3	0	2	0	0	0	0	
<b>Waste water</b>																
CRC030474	Discharge contaminant to land	Ashburton	Wilkins Rd WWTP	04/06/2004	03/06/2039	10	11/04/2025	1	0	0	9	0	0	0	0	
CRC030999.1	Discharge contaminant to land	Ashburton	Ocean Farm	05/09/2012	13/06/2039	31	02/10/2025	2	0	1	22	1	4	1	0	Nitrogen loading rates exceeded.
CRC031000.1	Discharge contaminant to land	Ashburton	Ocean Farm	05/09/2012	13/06/2039	16	11/03/2025	2	0	2	11	0	1	0	0	Overflow limit exceedance.
CRC031001.1	Discharge contaminant to land	Ashburton	Ocean Farm	18/10/2004	03/06/2039	5	12/03/2025	2	0	1	2	0	0	0	0	
CRC031002	Discharge contaminant to land	Ashburton	Wilkins Rd WWTP	04/06/2004	03/06/2039	4	21/03/2025	1	0	0	3	0	0	0	0	
CRC031003	Discharge contaminant to air	Ashburton	Wilkins Rd WWTP	04/06/2004	03/06/2039	8	20/11/2025	2	0	0	6	0	0	0	0	
CRC031005	Divert Surface Water	Ashburton	Ocean Farm	04/06/2004	03/06/2039	6	NM									
CRC031006	Discharge contaminant to water	Ashburton	Ocean Farm	04/06/2004	03/06/2039	6	21/03/2024	2	0	2	2	0	0	0	0	
CRC031007	Disturb bed of waterway	Ashburton	Ocean Farm	04/06/2004	03/06/2039	12	NM									
CRC031148	Discharge contaminant to air	Ashburton	Ocean Farm	18/10/2004	03/06/2039	11	23/04/2025	2	0	0	9	0	0	0	0	
CRC093639	Discharge contaminant to land	Ashburton	Ocean Farm	05/09/2012	03/06/2039	14	16/01/2026	6	0	0	8	0	0	0	0	
CRC200198	Take groundwater	Ashburton	Ocean Farm	10/10/2019	03/06/2039	17	03/02/2021	0	14	0	3	0	0	0	0	
CRC244473	Discharge contaminant to air	Rakaia	Rakaia WWTP Sludge beds	29/07/2024	29/07/2029	9	04/09/2025	2	0	0	7	0	0	0	0	
CRC244933	To use land for a community wastewater treatment system	Rakaia	Rakaia WWTP	29/07/2024	29/07/2029	9	NM									
CRC980563	Take Groundwater	Rakaia	Rakaia WWTP	28/11/1997	26/11/2032	4	03/02/2021	0	2	0	2	0	0	0	0	
CRC980564.1	Discharge contaminant to land	Rakaia	Rakaia WWTP	15/02/2012	11/03/2033	27	17/06/2025	2	3	1	18	3	0	0	0	Sludge, and FC exceedances.
CRC980565	Discharge contaminant to air	Rakaia	Rakaia WWTP	11/03/1998	23/03/2033	6	01/12/2023	1	1	0	3	1	0	0	0	
CRC991241	Discharge contaminant to land	Methven	Methven WWTP	08/07/1999	08/07/2034	15	18/03/2025	2	3	0	7	2	0	0	0	Exceeding effluent discharge limit

## Appendix B (Continued)

### ADC COMPLIANCE STATUS SUMMARY - FOR RMA ISSUED RESOURCE CONSENTS

#### Operational Consents\*

Consent Number	Activity	Scheme Network	Local Name	Date Granted	Expiry Date	No: of Conditions	Date last monitored by Ecan	Not Operational	Not Monitored	Unable to determine compliance	Compliant	Non-Compliant No Action required	Non-Compliant Action Required	Significant Non-Compliance	Overall Compliance	Reason
<b>Storm water</b>																
CRC020158.1	Disturb bed of waterway	Mill Creek	Mill Creek	07/10/2011	30/11/2026	17	NM									
CRC051734.1	Discharge contaminant to land	Methven	Wayne Place, Methven	20/06/2005	17/06/2040	8	NM									
CRC103734	Disturb bed of waterway	Ashburton	Dobson Str West	29/11/2010	29/11/2045	20	NM									
CRC120550	Discharge contaminant to water	Mill Creek	Mill Creek	07/10/2011	20/11/2036	6	NM									
CRC120552	Divert & take Surface water	Mill Creek	Mill Creek	07/10/2011	20/11/2036	7	NM									
CRC143888	Discharge contaminant to land	Ashburton	Wollen Mills Drive	14/11/2013	20/01/2044	7	NM									
CRC186263	To discharge stormwater to land & water from existing & future	Ashburton	Ashburton network wide cc	17/06/2019	17/06/2044	43	17/12/2025	7	3	4	26	3	0	0		ESGPS from contractor
CRC213699	To discharge treatment stormwater into water	Ashburton	Charleworth Dr, Hanrahan	16/02/2021	29/04/2046	24	NM									

**\*Notes:-**

- Consent summary only covers consents for the day to day operation of the 3 waters activities. Construction phase consents will be reported by exception through the relevant capital project reporting.
- Rows shaded in blue indicate new CMR received since last Water Cmte report.

[Return to RMA Consents Compliance Commentary](#)

## Appendix C

### Ashburton District Council Water Committee Financials

Income & Expenditure Report to:

Period Ending 31 December



#### **OPERATING INCOME**

<b><u>OPERATING INCOME</u></b>			26GLFOR1				26GLFOR1				50%
Description	CC	Nat Acc	YTD Actual	YTD Budget	YTD Variance	% of YTD Budget	FY Budget	FY Variance	% of FY Budget		
Drinking Water	#	#	\$ 4,787,248	\$ 4,774,202	\$ 13,046	100%	\$ 9,548,404	\$ (4,761,156)	50%		
Wastewater	#	#	\$ 3,641,989	\$ 3,580,111	\$ 61,878	102%	\$ 7,160,221	\$ (3,518,233)	51%		
Stormwater	#	#	\$ 627,982	\$ 616,722	\$ 11,260	102%	\$ 1,233,445	\$ (605,462)	51%		

#### **OPERATING EXPENDITURE**

Description	CC	Nat Acc	YTD Actual	YTD Budget	YTD Variance	% of YTD Budget	FY Budget	FY Variance	% of FY Budget
Drinking Water	#	#	\$ 4,638,296	\$ 4,605,056	\$ 33,240	101%	\$ 9,210,111	\$ (4,571,815)	50%
Wastewater	#	#	\$ 3,917,703	\$ 3,695,375	\$ 222,328	106%	\$ 7,390,750	\$ (3,473,048)	53%
Stormwater	#	#	\$ 769,492	\$ 808,526	\$ (39,034)	95%	\$ 1,617,052	\$ (847,560)	48%

#### **CAPITAL INCOME**

Description	CC	Nat Acc	YTD Actual	YTD Budget	YTD Variance	% of YTD Budget	FY Budget	FY Variance	% of FY Budget
Drinking Water	#	#	\$ 0	\$ 5,821,908	\$ (5,821,908)	0%	\$ 11,643,816	\$ (11,643,816)	0%
Wastewater	#	#	\$ 0	\$ 2,080,405	\$ (2,080,405)	0%	\$ 4,160,810	\$ (4,160,810)	0%
Stormwater	#	#	\$ 0	\$ 325,335	\$ (325,335)	0%	\$ 650,670	\$ (650,670)	0%

#### **CAPITAL EXPENDITURE**

Description	CC	Nat Acc	YTD Actual	YTD Budget	YTD Variance	% of YTD Budget	FY Budget	FY Variance	% of FY Budget
Drinking Water	#	#	\$ 7,869,504	\$ 6,618,140	\$ 1,251,364	119%	\$ 13,236,281	\$ (5,366,777)	59%
Wastewater	#	#	\$ 1,893,746	\$ 2,926,273	\$ (1,032,527)	65%	\$ 5,852,546	\$ (3,958,800)	32%
Stormwater	#	#	\$ 0	\$ (227,821)	\$ 227,821	0%	\$ 650,670	\$ (650,670)	0%

Return to [Financials Commentary](#)

