

Disclaimer/Qualifier for Floodable Area Maps:

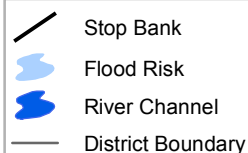
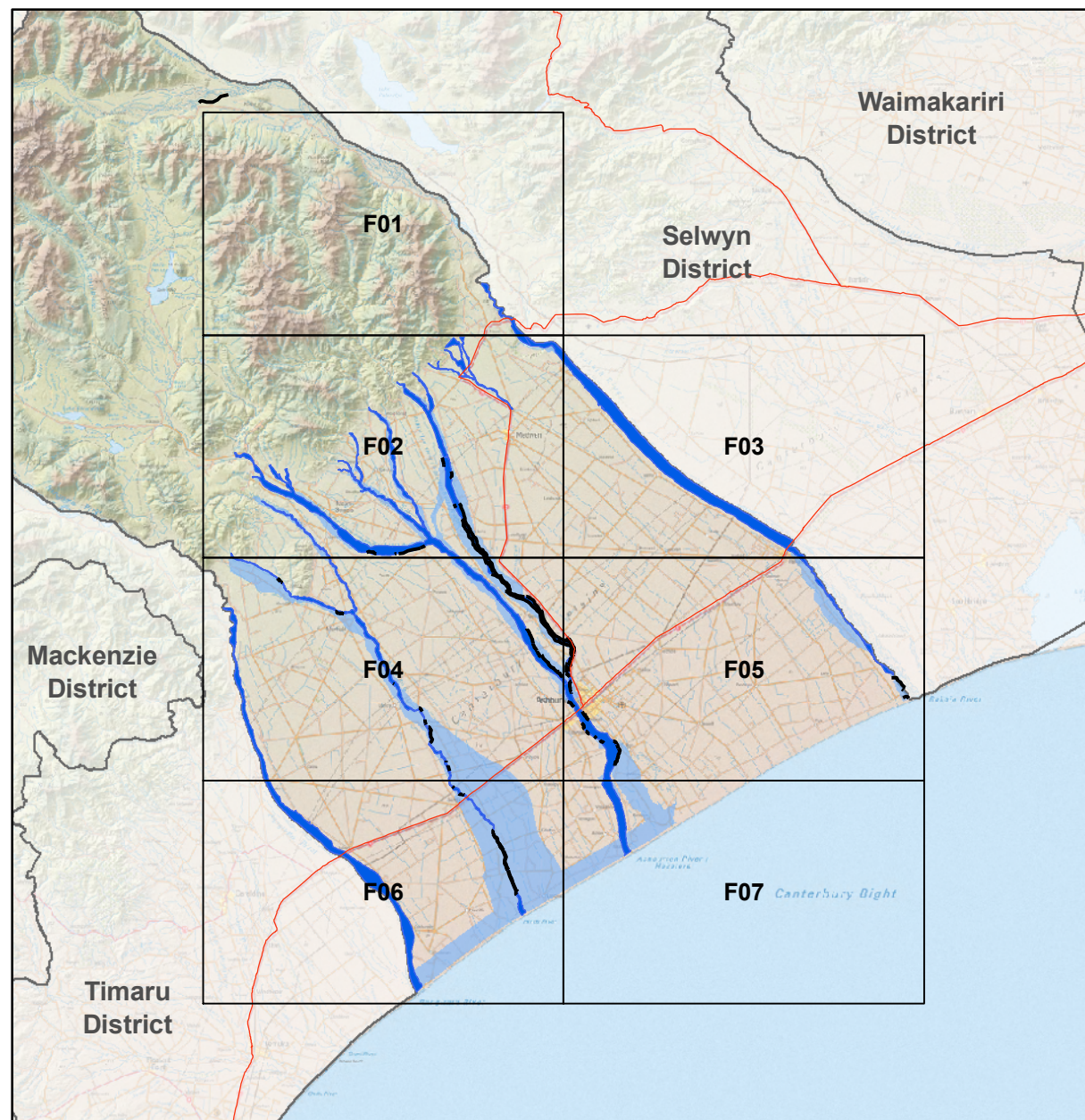
These maps show the location of stopbanks (as at 2010) and the floodable areas within the Ashburton District at a general level.

These maps are for information purposes only and should not be relied upon to give all information necessary to make decisions on whether a site is floodable. These maps have been prepared at a large scale and do not show site specific details. Site specific information should always be sought from the Canterbury Regional Council or a suitably qualified expert.

When considering a site in relation to the flood risk rules within the District Plan, the degree of flood-ability and any low/high hazard determination will be made when flood hazard requests for individual sites are made either to the Canterbury Regional Council or a suitably qualified expert.

These maps do not show as floodable any areas that are below stopbanks designed to provide protection from floods up to a 1 in 200 year event (0.5% AEP). This includes Ashburton and Tinwald townships, the area between Valetta and Tinwald and the Wakanui area downstream of Ashburton. These areas will still be floodable in floods bigger than the design standard of the stopbanks or if the stopbanks fail in a smaller flood.

These maps do not show localised ponding or local runoff flooding. It is practicably impossible to map all areas prone to local runoff flooding. Advice on this situation can be obtained from the Canterbury Regional Council or a suitably qualified expert.



Floodable Areas Map Index Ashburton District Plan

