

# Rakaia Salmon Site Enhancement Project

We are proposing some enhancements to the Rakaia Salmon Site on State Highway 1 and would like your feedback. We have developed a plan for the Site by working closely with the Rakaia Lions, iwi, and a landscape architect.

Have your  
**Say!**

Your feedback will help us ensure we meet the current and future needs of the Rakaia community. We are accepting **feedback until 5pm, 4 October 2019.**

## What is the aim?

The Rakaia Salmon Site is used by local residents and has become a busy place to stop for visitors passing through the district. This project aims to:

- Work with the community to improve the usability and appearance of the Rakaia Salmon Site
- Benefit visitors to and residents of Rakaia
- Ensure we meet Council's Open Spaces Strategy principles, which state Open Spaces are:
  - effective in meeting community needs, and
  - enhance the district and environment, and improve recreational opportunities.



## Why does the site need to be enhanced?

### INCREASING DEMAND

NZTA have told us this stretch of State Highway 1 is getting busier. The visual prominence of the Site mean it is a popular stop for people to take a break, do their business, or have a bite. It is likely to get even busier.

### HIGH USAGE OF TOILETS

The toilets were constructed in 2001 but because of their high usage they have become quickly dated and unable to cope with demand, particularly when buses stop by. Around 500-700 people use the toilets each day.

### LANDSCAPING

The site has some low key landscaping but additional landscaping is required to improve the attractiveness and functionality of the site.

## What are we proposing?

We are proposing to upgrade and refresh the site with a staged approach to implementation.

KEY FEATURE	EXPLANATION
New toilets	Replacing the existing toilets with a new ten-pan toilet block that provides wheelchair access, an external row of hand basins, a drinking fountain, and associated entrance paths with bollards
Solar powered rubbish bins	Installing an additional bin with internal compactors
Concrete paths	New hardstand centralised area that includes concrete paths of varying widths inlaid with wooden sleepers to provide year round dry underfoot access
Additional seating	Including picnic tables
Signage detailing Rakaia's history	Installation of a series of interpretative signage detailing the history of Rakaia to provide a short loop walk around the site
Playground equipment	Additional playground equipment and the centralisation of existing equipment within the site
Landscaping	Soft landscaping to include native garden area to provide shelter, improve aesthetics and control foot traffic
Dump Station	We have heard concern expressed with the current dump station and plan on relocating this out of the Salmon Site to an alternative location in Rakaia.

Open spaces of the Ashburton District contribute towards the beauty and enjoyment of the area for residents and visitors alike.

## How much will this cost and how will we pay?

We know there are concerns amongst Rakaia residents that ratepayers are picking up the bill for toilets used mainly by tourists. This is the reason we have applied for funding from the Government. We have received nearly \$740,000 towards this project from the Tourism Infrastructure Fund for the replacement of the toilets and some of the landscaping. The Rakaia Lions are generously contributing \$20,000 towards this project and with Council engaged a landscape architect to prepare a landscape plan. The remaining \$198,000 will be funded from existing Council budgets that had been ring-fenced for upgrades in Rakaia's open spaces.

Funding received from the Government	\$739,945
Council Contribution	\$198,000
Funding received from the Rakaia Lions	\$ 20,000
<b>Estimated approximate total cost</b>	<b>\$958,000</b>

## How did we develop the proposal?

This project has been a team effort between Council and the Rakaia Lions, with the help of a landscape architect. The Rakaia Lions had initially wanted to carry out some landscaping of the area, and we wanted to improve the toilet facilities. After the initial idea, we conducted a survey of users of the site over the 2018/19 summer to gauge the opinion of site users, then commissioned a landscape architect to develop a consolidated landscape plan.

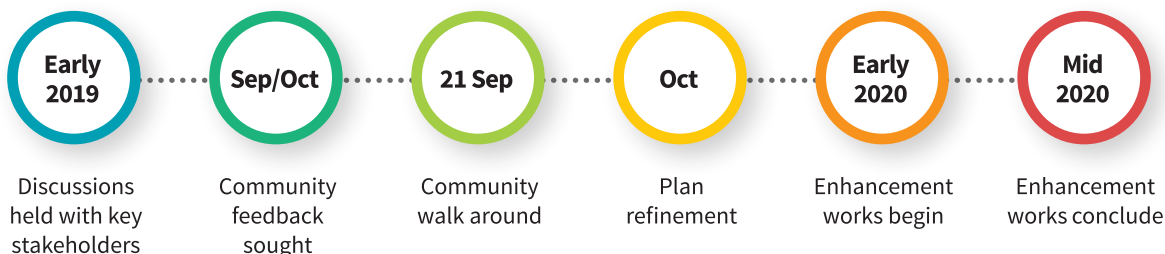
After the initial idea of the Rakaia Lions for improving the landscaping on the site, we conducted a survey of users of the site over the 2018/2019 summer. We then had conversations with a number of parties to identify the main concerns with the area. These included: Aoraki Environmental Consultancy (local iwi representatives), the Rakaia Community Association, the Rakaia Lions, and Experience Mid-Canterbury (local tourism agency). We received letters of support from each of these organisations. The feedback from these organisations coupled with advice from industry experts has helped us develop the plan for the Site.

## Come and talk to us

We invite you to come and have a chat with a couple of the Council officers who have been working on this project. They will take you for a walk around the Site and explain what is proposed.

**The walk around will take place from 12-2pm on Saturday 21 September. Feel free to stop by at any time.**

### TIMELINE



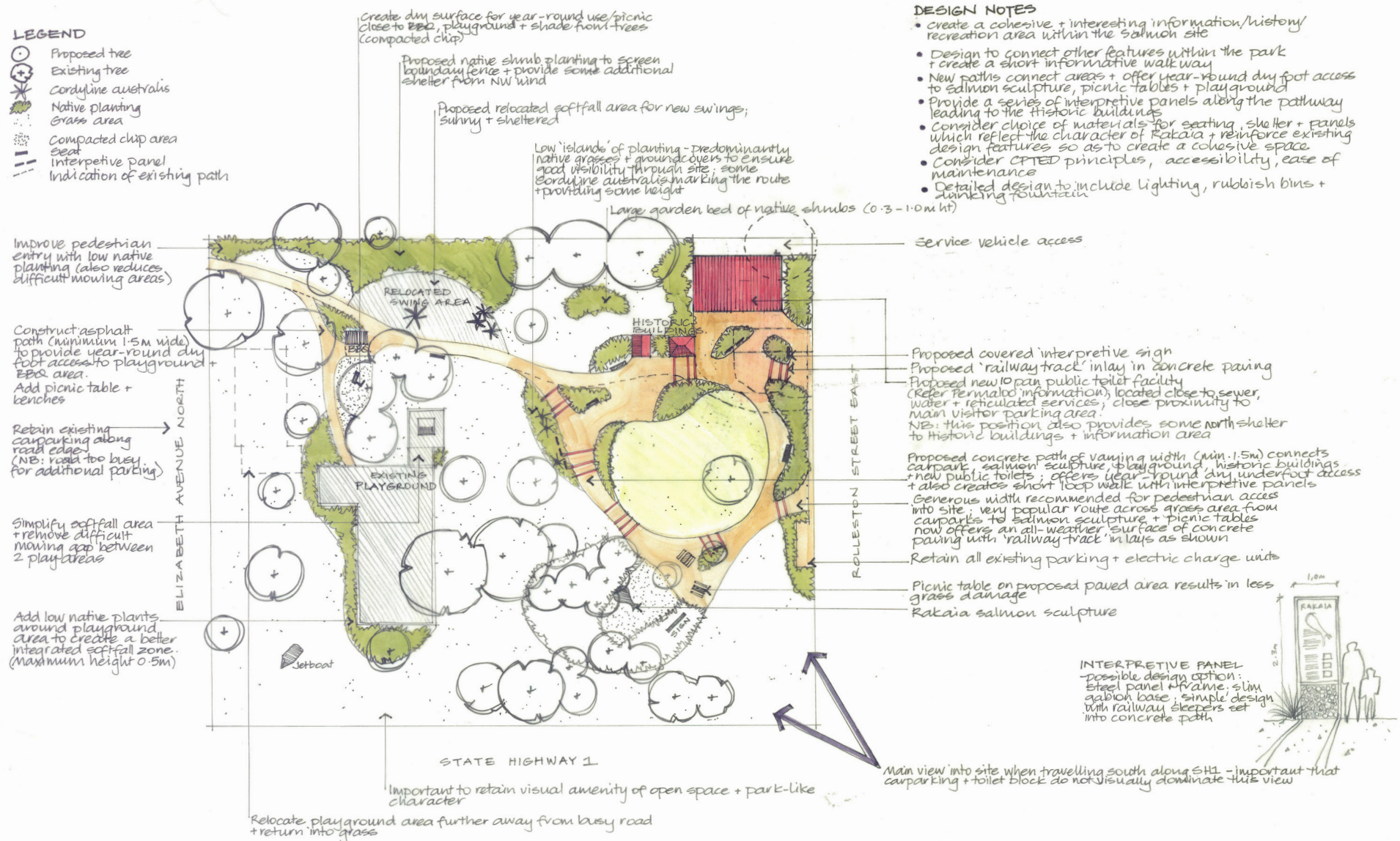
To provide feedback, please visit [ashburtondc.govt.nz/haveyoursay](https://ashburtondc.govt.nz/haveyoursay) where you will find a link to a short survey.

If you have any questions regarding this project, please contact [submissions@adc.govt.nz](mailto:submissions@adc.govt.nz) or (03) 307 0000.

*Have your*  
**Say!**

Your feedback will help us ensure we meet the current and future needs of the Rakaia community. We are accepting **feedback until 5pm, 4 October 2019.**

# Proposed Rakaia Salmon Site Concept Plan



Amended 26.03.2019

RAKAIA SALMON SITE  
RAKAIA, MID-CANTERBURY

Prepared for Ashburton District Council

LANDSCAPE  
CONCEPT PLAN

**TRACEY:OWER**  
Landscape Architects Ltd

Design: TB  
Date: 14.03.2019  
Drawn: TO  
Scale: 1:400 @ A2  
Reference: TO18020