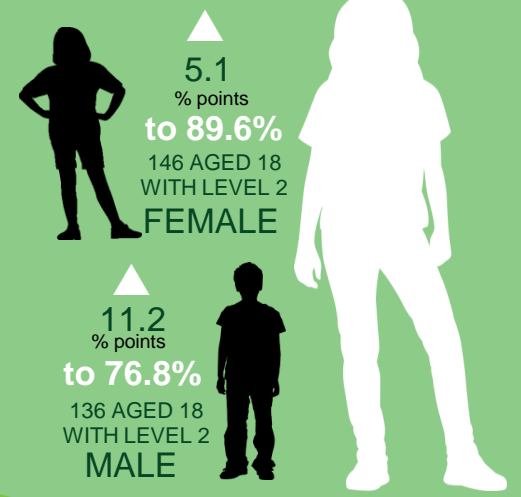
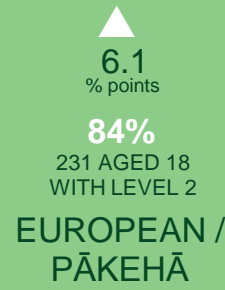
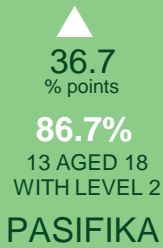
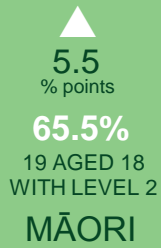
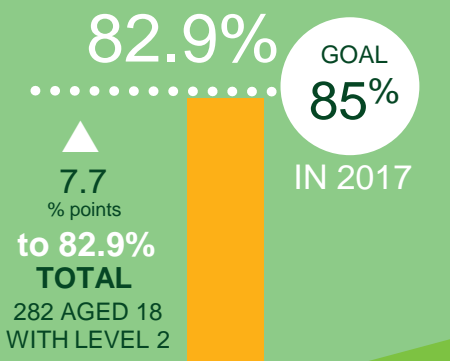


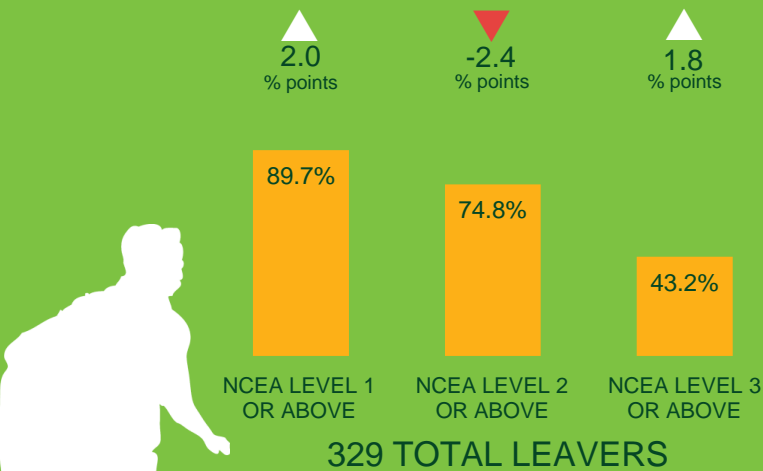
Ashburton District EDUCATION PROFILE 2014-2015

6,040 5-18 YEAR OLDS

SECONDARY / TERTIARY 2015 18 YEAR OLDS WITH NCEA LEVEL 2 OR EQUIVALENT

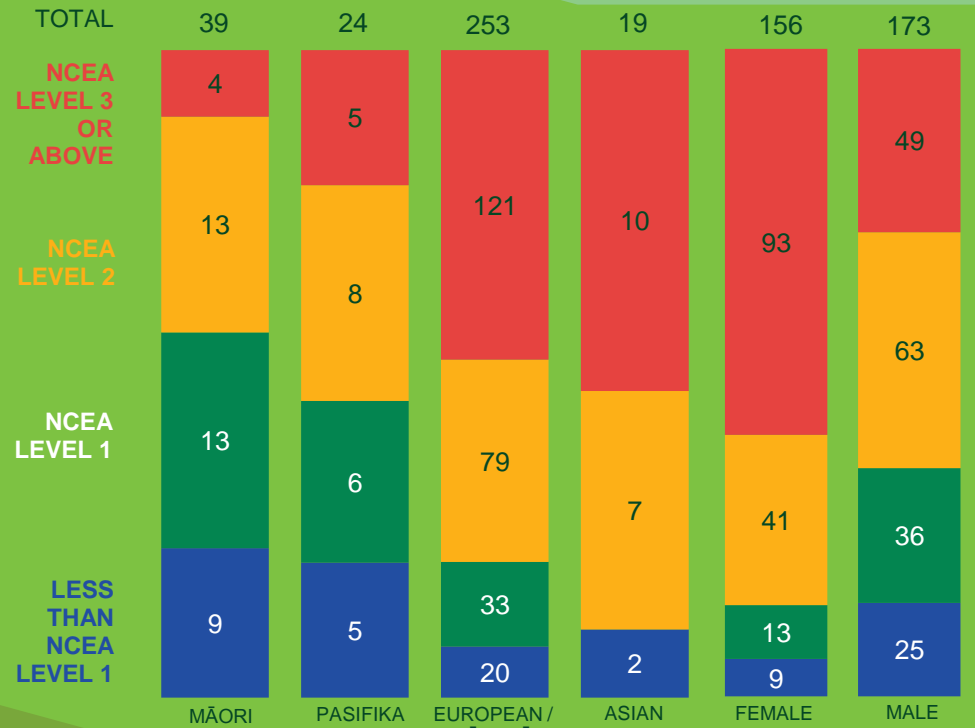


SECONDARY 2015 QUALIFIED LEAVERS WITH NCEA OR EQUIVALENT QUALIFICATIONS

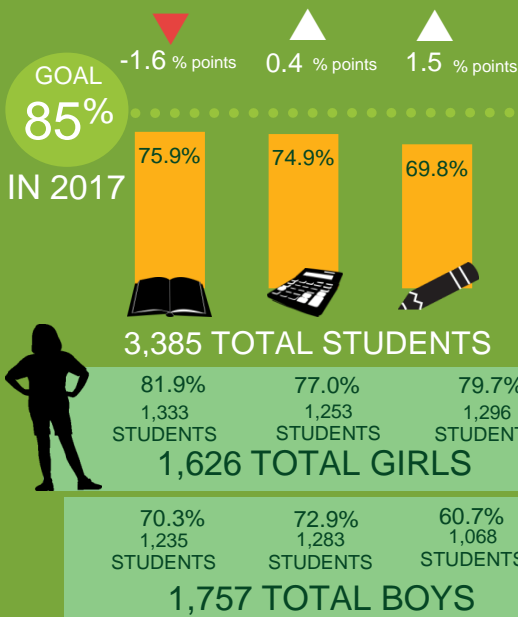


2 SCHOOLS WITH STUDENTS LEAVING SCHOOLING

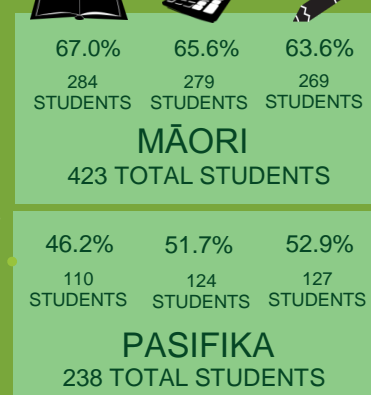
SCHOOL LEAVER HIGHEST QUALIFICATION NUMBER OF STUDENTS 2015



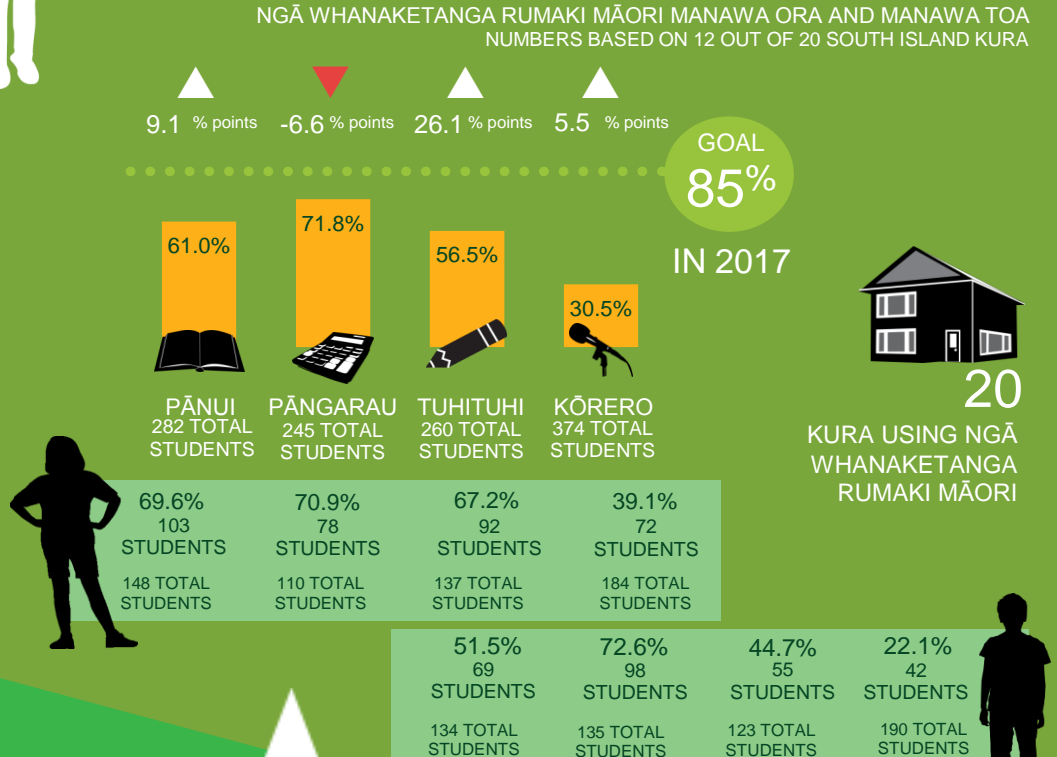
PRIMARY 2015 ACHIEVEMENT AT OR ABOVE NATIONAL STANDARDS NUMBERS BASED ON 22 OUT OF 22 SCHOOLS



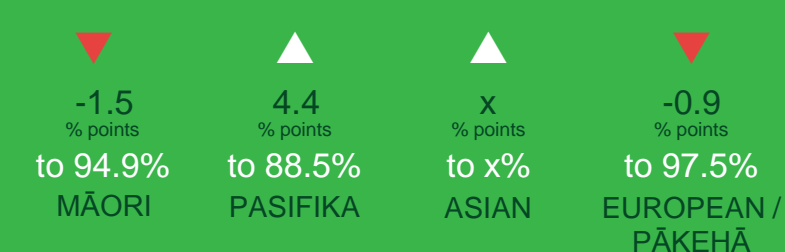
22 SCHOOLS USING NATIONAL STANDARDS



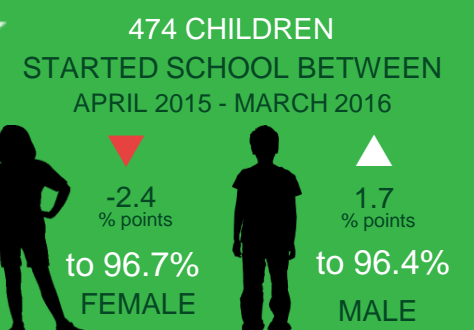
KURA AND MĀORI MEDIUM 2015 ACHIEVEMENT



EARLY CHILDHOOD EDUCATION MARCH 2016 PARTICIPATION



MARCH 2016 96.5% TOTAL



▲ ▼ = ALL COMPARISONS ARE TO PREVIOUS YEAR