



Ashburton District Council

AGENDA

A **MEETING** of the **OPERATIONS COMMITTEE**
will be held as follows:

Date: Thursday 7 July 2011

Time: To follow Environmental Services Committee

Venue: Council Chamber
5 Baring Square West
Ashburton

B LESTER
Chief Executive

MEMBERS:

Cr L J Leadley (Chair)
Cr P W Reveley (Deputy Chair)
Cr N A Brown
Cr D M Favel
Cr D N Nelson
Cr M J Nordqvist
Cr A B Totty
Cr R S Wilson
Mayor A R McKay (ex officio)

AGENDA

Page

1 APOLOGIES

2 NOTIFICATION OF EXTRAORDINARY BUSINESS

3 CONFIRMATION OF MINUTES

Operations Committee – 9/06/11

1

4 MATTERS ARISING

MATTERS FOR COMMITTEE DECISION

5 Acton Irrigation Limited – Capital contribution to fish screening

5

6 Cycleway – Ashburton Town

10

ACTIVITY REPORTS

7 7.1 General **14**

7.2 Roding **15**

7.3 Water Supplies **18**

7.4 Wastewater **19**

7.5 Stormwater **20**

7.6 Stockwater **20**

7.7 Solid Waste Management **21**

7.8 Emergency Management **25**

7.9 Road Safety **25**

7.10 Contracts Awarded **26**

7.11 Customer Service Requests **26**

7.12 Methven Community Board **26**

8 Water Subcommittee – 22/06/11 **27**

- *Recommendation – Acton Irrigation contribution to fish screens*

BUSINESS TRANSACTED WITH THE PUBLIC EXCLUDED

9 Confirmation of Minutes – 9/06/11 **53**

[now in open meeting]

- New street lighting operation & maintenance
- C521 – minor township maintenance (Rakaia)

1 July 2011

Ashburton District Council Report

File No 0560-0704
Date 7 July 2011
Report to Operations Committee
From Water Services Manager
Subject Acton Irrigation Limited – Request for Capital Contribution to Fish Screening

5 Acton Irrigation Limited – Request for Capital Contribution to Fish Screening

5.1 Summary

The Acton Irrigation Scheme has been constructed and has replaced the Acton stockwater intake and main race.

The scheme included the construction of an intake, screens and settling ponds. By undertaking the construction of a screen intended to meet their own fish screen conditions, Acton Irrigation Limited (AIL) are of the view that Council will no longer be required to install a separate fish screening structure at the site, which is a condition of Council's own resource consents (yet to be issued).

AIL have written to Council formally requesting that Council make a contribution to the capital cost of the intake works. It has been suggested that this contribution be a sum of \$40,000 which they understand to be budgeted in this year's capital programme for a fish screen at the Acton Intake.

The purpose of this report is to seek Committee approval of the request.

5.2 Recommendation

- 1 **That** Ashburton Irrigation Limited be requested to obtain written confirmation from Environment Canterbury that the screening structures provided for the Action Irrigation Scheme intake meet the requirements of the fish screen conditions within the Ashburton District Council Consent (CRC012126: Condition 3); and
- 2 **That** upon receipt of satisfactory written confirmation, the Committee approves the amount of \$40,000 exclusive GST as full and final payment for all liabilities (excluding maintenance) for fish screening at the Acton Intake for as long as the irrigation scheme operates.

5.3 Background

The Acton Irrigation Scheme has been constructed by Acton Irrigation Limited and now replaces the original Acton stockwater intake and main race. AIL is now responsible for providing stockwater services to Council stockwater customers within the scheme area.

The scheme included the construction of an intake, screens and settling ponds, as well as main race enlargement and a number of storage ponds on private property.

By undertaking the construction of a screen intended to meet their own fish screen conditions, AIL are of the view that Council will no longer be required to install a separate fish screening structure at the site, which is a condition of Council's own resource consents (yet to be issued).

It has not been confirmed at this point whether the screening that AIL have constructed has met the requirements of their resource consent or whether the structure will be sufficient to meet the Council conditions. Note-: It would now be very difficult if not impossible for Council to install a separate device just for the stockwater component of flow.

AIL have written to Council formally requesting that Council make a contribution to the capital cost of the intake works. It has been suggested that this contribution be a sum of \$40,000 which they understand to be budgeted in this year's capital programme for a fish screen at the Acton Intake.

The 2010/11 stockwater capital programme has \$5,788 available for forward design / consultation of a fish-screen at the Acton Intake. There are also specific budgets of \$59,425 and \$84,893 for construction of fish screens at Pudding Hill and Methven Auxiliary Intakes respectively. All three projects have been deferred pending the outcome of the sustainable farming fund study on fish screens.

Prior to the construction of the scheme, two agreements were developed and signed Acton Irrigation Limited. They are-:

- Deed of Licence to Use Water Race System
- Agreement in Relation to Management of Water Race System.

Neither of these documents outlines nor specifies any capital contributions to be made by Council for scheme construction. The latter document references the payment structure around operating the scheme once constructed. There appears to be no contractual basis or undertaking by Council to make a contribution to the intake works.

Notwithstanding this, if it can be demonstrated that the new intake works constructed by AIL have in fact addressed Council's liability for future fish screening at this site then it may be considered appropriate that some monetary consideration is made. The long term programmes had originally indicated for 2011/12 year a budget of \$75,000 (physical works component) for the fish screen at the Acton Intake, however, the project was not put forward into the draft budget on the basis that it was unlikely to be required (refer *2011/12 Budget Analysis & Commentary – Water, Wastewater, Stormwater and Stockwater*).

5.4 Options & Risks Considered

The following options are available.

Option One – Approve the Request for Contribution

The request for funding is approved but subject to confirmation that Council's liability in regard to fish screens has been met. This would need to be demonstrated by written evidence from Environment Canterbury.

Risks

- *None identified.*

Option Two – Decline the Request for Contribution

The request for funding is declined.

Risks

- *None identified.*

The Water Subcommittee's recommendation is **Option 1 – Approve the request for contribution**. Note-: There is no obligation for Council to make a contribution, but if it can be shown that Council will not have to install fish screening of its own then the requested contribution may be considered reasonable.

5.5 Statutory Implications

The statutory implication arising from the recommendations contained in this report are:

Resource Management Act 1991

The requirements for fish screens are set through conditions in Resource Consents issued in accordance with Section 108 (1)(c). A partial extract of the relevant text is reproduced below-:

108 Conditions of resource consents

(1) Except as expressly provided in this section and subject to any regulations, a resource consent may be granted on any condition that the consent authority considers appropriate, including any condition of a kind referred to in subsection (2).

(2) A resource consent may include any 1 or more of the following conditions:

(a) subject to subsection (10), a condition requiring that a financial contribution be made:

(b) a condition requiring provision of a bond (and describing the terms of that bond) in accordance with section 108A:

(c) a condition requiring that services or works, including (but without limitation) the protection, planting, or replanting of any tree or other vegetation or the protection, restoration, or enhancement of any natural or physical resource, be provided:

(section continues...)

Council resource consents were issued by decision on 23 October 2009. Council chose to appeal the duration of the consents to allow time to address a matter in regard to the Rakaia Conservation Order. The process has been concluded and a final decision on the appeal is expected very soon. The conditions as they relate to fish screens at the Acton Intake are reproduced below-:

3. The consent holder shall, within three years of the first exercise of this consent, design, construct and commission a fish exclusion device to be applied near, at or within, the Acton intake or diversion channel subject to:

(a) Water shall only be taken when a fish exclusion device with the following design criteria, or a device that achieves the same, or better, level of fish exclusion effectiveness is operated and maintained across the intake to ensure that fish and fish fry are prevented from passing through the intake.

Design criteria: a maximum mesh width and height seize of three millimetres or slot width of two millimetres.

(b) The fish exclusion device shall be positioned to ensure that there is unimpeded fish passage to and from the waterway and to avoid the entrapment of fish at the point of abstraction, and to minimise the risk of fish being damaged by contact with the face of the exclusion device.

(c) The fish exclusion device shall be designed and installed to ensure that:

(i) No less than 50 percent of the exclusion device surface is oriented parallel to the direction of water flow.

(ii) Where practicable, the exclusion device is positioned in the water column a minimum of 300 millimetres above the bed of the waterway and a minimum of one exclusion device radius from the surface of the water.

(iii) The approach velocity perpendicular to the face of the exclusion device shall not exceed 0.06 metres per second if no self-cleaning mechanism exists, or 0.12 metres per second if a self-cleaning mechanism is operational.

(iv) *The sweep velocity parallel to the face of the exclusion device shall exceed the design approach velocity.*

(d) *The fish exclusion device shall be designed or supplied by a suitably qualified person who shall ensure the design criteria specified in condition (a)-(c)(iv) of this consent is achieved. Prior to the installation of the fish exclusion device, a report containing final design plans and illustrating how the fish exclusion device will meet the required design criteria, and an operation and maintenance plan for the fish exclusion device shall be provided to the Canterbury Regional Council, attention RM Compliance and Enforcement Manager.*

(e) *A certificate shall be provided to the Canterbury Regional Council by the designer or supplier of the fish exclusion device to certify that the fish exclusion device has been installed in accordance with the details provided to the Canterbury Regional Council in accordance with condition (d) of this consent.*

(f) *The fish exclusion device shall be maintained in good working order. Records shall be kept of all inspections and maintenance and those records shall be provided to the Canterbury Regional Council upon request.*

(g) *The consent holder shall supply annually in November each year an update to the Canterbury Regional, Attention: RMA Compliance and Enforcement Manager, on the progress of installing fish exclusion devices, until required devices are in place.*

(h) *In the event of a fish exclusion device becoming damaged or ineffective, the consent holder shall, within 24 hours of becoming aware of the failure of the device, notify the Canterbury Regional Council, Attention: RMA Compliance and Enforcement Manager, of the situation, the action that will be taken, as soon as practicable, to correct the failure, and the timeframe within which the repairs will be completed.*

5.6 Consultation

No consultation with the wider community has taken place on this matter.

This matter was the subject of consideration by the water subcommittee at the 22 June 2011 meeting. The Subcommittee passed the following recommendation-:

That Council approve a contribution of \$40,000 exclusive GST to Acton Irrigation Limited for the construction of fish screening at the Acton Intake subject to-:

- *Confirmation that the structure meets the fish screen certification requirements as detailed under the Council's stockwater consent."*

This report and recommendation captures the general intent of the water Subcommittee's recommendation.

5.7 Strategic Links

Approval of the recommendations contained in this report is consistent with Outcomes and Strategic Objectives outlined in the LTCCP. In particular;

Outcome 1: A thriving and diverse local economy that provides the foundation for a quality lifestyle.

Strategic Objective. Our community has access to quality infrastructure (roading, water, footpaths, wastewater and storm water) that is efficient and reliable (Priority Objective).

Outcome 2: A thriving and diverse local economy that provides the foundation for a quality lifestyle.

Strategic Objective. Water, land and air are managed sustainably (Priority Objective).

5.8 Financial

The financial implications arising from the recommendations contained in this report are limited to the contribution requested by AIL.

The total budget available for the Acton fish screen project is \$5,788 (excluding operations management). This was to cover forward design and consultation with key stakeholders. Any contribution above this amount could be met from existing budget provisions originally allocated for the fish screens at the Methven sites, now not being progressed at this time. There is total \$144,318 (excluding operations management) budget available. These projects will eventually need to be re-budgeted and will take into consideration the findings / recommendations arising from the fish screening study.

Note-: There are other capital funds approved in the stockwater area for "Intake Improvements for Consent Compliance" in each of the four stockwater areas – as noted during subcommittee discussions.

These budgets were for projects specifically covering any structural changes needed at the intakes, and the associated equipment required, to meet flow measurement requirements of the consents, and the Resource Management (Measurement and Reporting of Water Takes) Regulations 2010. These budgets have been partially committed for this purpose and should not be utilised at this point.

Prepared By:

A R Guthrie
Water Services Manager

Approved by:

R S Rouse
Operations Manager

Ashburton District Council Report

File No
Date 7 July 2011
Report to Operations Committee
From Roading and Street Services Manager/ Senior District Planner
Subject Cycleway, Ashburton Town Centre

6 Cycleway – Ashburton Town Centre

6.1 Summary

The report provides an evaluation of two options for a cycleway extension from the SH1 railway crossing to Havelock Street through Ashburton Town Centre, following a submission on the Draft Annual Plan from Braided Waters Trust.

6.2 Recommendation

That the Committee approves Option 2 for a cycleway extension from the SH1 railway crossing to Havelock Street, via West Street car park, with funding to be spent on implementation of the designs previously prepared.

6.3 Background

A submission to the draft Annual Plan 2011/12 from the Braided Waters Trust sought funding for extending the cycleway that currently ends at Moore Street through Ashburton town centre along the eastern side of the railway line. Council referred the matter to Town Centre Subcommittee who at a meeting on 14 June 2011 asked for further investigation to be undertaken, with a report to be prepared for the Operations Committee on 7 July.

This route considers the two options for the route of the proposed cycleway extension. These are as follows with an assessment undertaken of each.

Option 1 : Cycleway extension via 'green' adjacent to East Street

The route sought by the Braided Waters Trust is via the area between East Street and the railway line, through an area referred to as the 'green'. The route sought would run from Moore Street to a new rail crossing north of the railway station.

A section of the green between Moore Street and the overhead bridge adjacent to the railway station has a paved footpath that could be utilised for the cycleway. The 'green' is an area that provides an important green space in the town centre for pedestrians. It is a space that the Town Centre Concept Plan adopted by Council in 2009 also identifies as a Key Project – being described as the 'Green Corridor – The Green', with the purpose of this project being *To repair and strengthen the existing green links connecting the two major open spaces within the town, the Domain and the Ashburton River, with a 'suggested improvement' being complete continuous cycling and walking lanes adjacent to East Street.*

This option has the benefit of enabling cyclists to ride in an pleasant environment, separated from vehicular traffic on East Street. It would be in close proximity to businesses on East Street, and would pass the i-Site, providing visitor information to cyclists using the route. Furthermore, it would utilise the existing path through the green, reducing the expense of creating a new cycleway.

The options for a cycleway extension between the SH1 Railway Crossing (south end) and Havelock Street (north end) were considered in a report dated 2008, which provided an assessment of 9 options. The report considered the option of a cycle route through the green adjacent to East Street (Option 7) and concluded that this was *"less safe for cyclists due to congestion/ conflict at the areas of the public toilets, fountain and information centre"*. These 'pinch points' are where cyclists would need to either join the road or walk their bicycles, particularly outside the visitor information centre where people congregate. Furthermore, the shared use of the path could potentially lead to greater conflict between pedestrians and cyclists.

The preferred option identified in that report, Option 9, is through West Street car park, which is considered below.

Option 2 : Cycleway extension via West Street car park

Option 9 of the report from 2008 proposes to cross SH1 south of the SH1 railway crossing, then run along the green adjacent to East Street before joining Moore Street to cross back over the railway line and linking up with a dedicated cycleway on the eastern edge of the West Street car park. This was the preferred option as it provided increased safety for cyclists, pedestrians and vehicles on the basis that the routing through the West Street car park provides separation from vehicles and pedestrians with the exception of two crossing points.

The new cycleway will be approximately 2.0 m wide in accordance with recommended standards for this type of work. The new cycle path will be located a metre from the existing railway fence to give some clearance from shrubs etc, and will require new sections of kerb on the west side. It will be completed with a smooth asphaltic concrete surface.

Special attention will be applied at the two locations where the cycle lane will intersect with the footpath used by people crossing the railway land. The actual intersection will be cross hatched in yellow to warn both cyclists and pedestrians of the site of conflict of these two mobility modes, and the cycle lane will be intentionally deviated prior to the footpath to warn them of the approaching footpath. Clear and concise signage will be placed on both cycle way and footpath, and pedestrians will be required to give way to cyclists. Vegetation will be cleared on the fence to provide better visibility for both pedestrians and cyclists. It needs to be noted that we have had a request from NZ Railways Corporation to remove sufficient vegetation from each side of the pedestrian rail crossings so train drivers can see when people are approaching these crossings. This would also be advantageous to the pedestrians.

At the Moore St end, the new cycleway will start from the existing footpath. At the Havelock St end, it will merge into the footpath, and from here cyclists will share the south west footpath with pedestrians and use new pedestrian phases to get back onto state highway 1 (West St) or to access the brick path on the green on East Street.

The cycleway construction will require the removal and relocation of two existing trees.

Proposed alterations to the West St car park

To accommodate the new cycleway, it is necessary to carry out some changes to the West St car park as follows:

- Removal of some sections of existing kerb and channel, and construction of some sections of new kerb and channel.
- Repositioning and remarking the existing car park layout
- Removal of three trees, two of which may be able to be relocated.
- Removal of some grass areas and constructing these as car parks.

- Changing the traffic flow to a set clockwise direction around the car park, clearly marked by arrows and signposted.
- There will be 26 new car parks formed and 5 car parks removed, to provide a nett change of 21 additional car parks
- There will be no changes at this stage to the “2 hr” and “all day” parking zones.
- Entrances and exits to the car park of West St will not be changed.
- Stormwater drainage system will not require any changes

Being on the eastern side of the car park this option is approximately 20 metres from the alternative route through the green adjacent to East Street. The main trunk railway line and a fence lies between the two routes. The proposed cycleway will have openings in two positions along its route, adjacent to the i-Site on East Street and fountain opposite Tancred Street. While separated from the shopping area on East Street, it is the officer’s view that the route would still be easily accessible to businesses and the i-Site via a crossing point of the railway line. While either route will support a variety of users including school children, tourists and other cyclists, a segregated cycle route is in the officer’s opinion a more attractive option for cyclists.

Option 2 is not consistent with the Town Centre Concept Plan in that it does not provide a cycle lane adjacent to East Street. However, the proximity of the cycleway through West Street car park would still enhance opportunities for cycling in and through the town centre, which is within sight of the proposed cycleway.

The provision of a dedicated cycleway through this space is considered to be a safer option for cyclists, pedestrians and other road users.

Design plans have been prepared for this option and additional costs of new plans being prepared could be avoided if this option is accepted.

6.4 Options & Risks Considered

The report has considered the options available. The options in summary are

1. Accept the recommendation for Option 2
2. Decline the recommendation for Option 2 and accept Option 1 as sought by the Braided Waters Trust
3. Decline Options 1 and 2 and reconsider the options put forward in the ‘Option Selection’ report from 2008. This would result in additional funding being spent on the reassessment of options.

The recommended option is Option 2.

6.5 Statutory Implications

There are no statutory implications.

6.6 Consultation

No consultation has been undertaken on the proposed route of the cycleway.

6.7 Strategic Links

The relevant outcomes from the Long Term Council Community Plan are as follows –

Outcome 2: Natural and developed environments are sustained for the enjoyment of current and future generations

Strategic Objectives

- *Our towns and rural areas are developed in ways that respect the local environment and meet the needs of the community. (Priority Objective)*

Outcome 6: A community with access to a variety of cultural, recreational and heritage experiences and facilities that enrich our quality of life

Strategic Objectives

- *Cultural, recreational and heritage experiences and facilities are accessible to the community and actively used.*

6.8 Financial

Costs for the project have not been reassessed since the initial assessment of options in 2008. However, approximately \$50,000 funding has been carried forward for the project with an additional \$23,000 allocated in the Annual Plan for the 2011/12 year.

Currently NZTA may not be willing to subsidise this work.

Prepared By:

B FAUTH

Roading and Street Services Manager

M STEVENSON

Senior District Planner

Approved by:

R ROUSE

Operations Manager

7. ACTIVITY REPORTS

7.1 General

7.1.1 Financial Reports

Financial reports for the period 1 July 2010 to 31 May are attached. **Pages 31-44**

7.1.2 Professional Services Contract

A contract initiation meeting was held on Wednesday 29 June. The original meeting was postponed due to the severe aftershocks in Christchurch.

7.1.3 Resource Consent Applications (Water Transfer Project)

It appears at this stage we have obtained affected party sign-off. This means that the consent could be granted before mid July.

7.1.4 Mount Hutt Riverbank Stockwater Supply Investigation

Work has commenced on the preparation of resource consent application documentation for the above.

In addition to the water transfer, an application will also be made for the location and construction of an infiltration gallery to supply the new scheme. The Methven Mount Hutt group have formally advised they will contribute towards the cost of this work.

7.1.5 Rakaia Barrhill Stockwater Race Closure

The work carried out by the working group is summarised below:

- Two meetings have been held to date and have been attended by all working group members.
- The first meeting considered:
 - Drivers for closure
 - Drivers to retain the race
 - Criteria/what is important regarding the supply of water
 - Possible options/alternatives
- Options have been evaluated against the criteria "what is important" and a table of options/effects was agreed by the working group at meeting 2. A copy of the table is attached. **Page 45**
- Further detailed work has been carried out on the shortlisted options and was considered by the working group on 6 July.

The Committee will be updated on the results of the working group discussion at the meeting.

7.1.6 Utilities Contract

Work to rewrite and price the utilities contract is taking longer than anticipated. The contract document is with Council's preferred service provider for pricing. Negotiations are programmed for completion by mid July with a report to Council late July/early August.

The existing contract will be "rolled over" and the commencement date of the new contract adjusted to meet the tender date.

There are no implications arising from the rolling over of the contract.

7.2 Roothing

7.2.1 State Highway Work 2010/11

- Major project work in the district has been completed.

7.2.2 Crash Reports

A record of crashes that have occurred in Ashburton district on state highways and local roads since last report is appended. **Pages 46-47**

7.2.3 General Maintenance

Since the last report graders have been working in the following areas:

Three Springs, Ashburton Gorge, Rakaia Gorge, Arundel Valetta, Mt Somers, Montalto, Cavendish, Hackthorne, Mayfield, Pudding Hill, Dorie, Rakaia, Dromore, Cairnbrae, Highbank, Hatfield and Punawai.

A sealed road pothole repair team has been working on the following roads:

Arundel Rakaia Gorge, Christys, Ashburton Staveley, Beach, Maronan, Maronan Ealing, Maronan Valetta, Ealing, Line, Tinwald Westerfield Mayfield, Thompsons Track, Forks, McCrorys, Gardiners, Tuarangi, Seafeld, South, Griffiths, Fords, Bells, Emerson, Thomson Street, Barford, Timaru Track, Lismore Mayfield, Ealing Montalto, Withells and Hinds Lismore.

Various digout repairs have been sealed.

Double Hill and Montalto roads have received maintenance metal.

A scoured out culvert on Upper Downs Road has been replaced with headwalls installed and headwalls have been installed on a stock water race culvert on Hackthorne Road.

Various signs have been replaced and reinstated around the district and ice gritting undertaken as required.

7.2.4 Area Wide Pavement Treatment

Contract C573 - Sealed Road Rehabilitation 2010/11 has been completed.

The widening and strengthening of Bremners Road together with the Glassworks / Bremners Road intersection improvements has been included as a variation to the resurfacing contract C592. The contract has fenced the MaltEurop boundary along Bremners and Glassworks Road as agreed. They have realigned the intersection and are undertaking the widening in preparation for the overall construction. Digout repairs have been undertaken on the section to be rehabilitated and widened.

7.2.5 Major Drainage Control

The Roadside Drainage Improvements Contract C594 has been completed.

Osborns Road Bridge #146 has been replaced with a culvert. Electricity Ashburton have yet to relocate a pole at the site.

7.2.6 Reseals of District Roads

Contract C592 - Reseals and Pre-seal Repairs, 2010/11.

The resurfacing work requested in this contract has been completed but inventory data to upgrade RAMM is still outstanding. The work at Bremners Road has been included as a variation following ACL's successful pricing of this work.

7.2.7 Bridges

The 2010/11 bridge replacement programme has been completed.

7.2.8 Street Cleaning

Routine cleaning is being carried out to programme. All reported incidents of detritus and undesirable material left on road carriageways or berms, and any blockages of surface water run-off have been attended to.

7.2.9 Traffic Services

Routine maintenance of road signs and traffic services continues as part of the road maintenance contract throughout the district.

Total numbers of signs affected during April and for the previous 11 months are:

	Jun	Jul	Aug/ Sep	Oct	Nov/ Dec	Jan/ Feb	Mar	Apr	May	Total 12 months
Replace broken signs	13	12	39	19	33	46	28	23	17	230
Replace missing signs	7	5	17	9	22	24	31	5	9	129
Replace or upgrade signs	26	9	9	3	9	2	9	9	33	109
Replace marker posts	43	-	64	-	113	47	-	-	14	281
Totals	89	26	129	31	177	119	68	37	73	749

Contract C556 – Maintenance of Road Markings 2009 – 2012. Operation of this contract has continued.

7.2.10 Carriageway Lighting

Contract C583 – Operation and Maintenance of Streetlights 2010-2011. Electricity Ashburton are continuing with maintenance work and operation of Council's street lights.

7.2.11 Minor Improvements

Three of the four rural intersections have been sealed (Stanley/Le Bretons, Stanley/Fairfield and Darts/Back Track). An 80m section of Anama Valetta Road has been sealed. The remainder of this intersection sealing however has had to be abandoned due to significant cattle damage occurring to the constructed surface by cows being driven to a neighbouring farm for testing and winter grazing.

The "improve safety at school" projects for this year are all under construction. Seal widening at Lagmhor is awaiting sealing with Longbeach and Dorie underway.

The intersection improvements at the Pudding Drayton/Arundel Rakaia Gorge Road are complete and the works at Scotts corner have been completed.

Bremners/Glassworks Road improvements have commenced as reported above.

The Lismore School / Cracroft Maronan / Trevors Road and the Hinds Arundel / Trevors/ Withells Road intersections contract C598 has been advertised with tenders closing on 14 June. Tenders have been evaluated and the contract will be let by 30 June. The work therefore will be committed this year and the funds unexpended will be carried forward.

Tenders have also been called for the Park / Kermod Street, Wills / East Street Brucefield / Kitchener Street intersection improvements and the kerb protrusion planned on Phillip Street. Tenders for this contract C597 have closed and tenders evaluated. As with contract C598 the contract will be let by 30 June and unexpended funds carried forward.

7.2.12 Seal Widening

The section of Bremners Road still to be widened is included with the Glassworks Road intersection upgrade and rehabilitation work being undertaken as a variation to contract C592.

7.2.13 New Roads

Contract C574 - Dobson St West Construction. The new road linking the existing section of Dobson Street with Robinson Street in the Riverside Industrial Area has been completed. Construction of stormwater overflow into the unnamed stream running through the site, from the soak pit on site, is delayed pending the issue of resource consent from ECan.

7.2.14 New Kerb & Channel and Footpaths

C568 - New and replacement kerb and channel and footpath, Ashburton District 2010/11 is complete. Practical completion for this contract was issued on 11 May.

7.2.15 Footpath Resurfacing 2010/11

Contract C595 "Footpath Resurfacing, Ashburton District 2010/11". The resurfacing has been completed.

7.2.16 Footpath Maintenance

Ongoing routine maintenance and cleaning of the urban footpaths continues.

7.2.17 Minor Township Maintenance Contracts

- **Methven**

No issues to report.

- **Rakaia**

No issues to report.

7.2.18 Public Conveniences

No issues to report.

7.2.19 Professional Services Contract

Under this contract the renewal and capital works completed during 2010/11 are to be loaded to RAMM. To date the contractors concerned have been remiss in providing the information and therefore the task is still to be completed.

The traffic count programme to be actioned as part of this contract has not been able to commence as the software required is still to be released by CJN Technologies as part of the RAMM 2011 upgrade.

Final options for the Allenton Shopping area upgrade are yet to be completed.

7.3 Water Supplies

7.3.1 AM-AK10 Water Pipeline Renewals – Ashburton, Methven & Mt Somers 10/11

Work commenced on Racecourse Road on 27 April. Work on this site was completed 31 May. This contract is now complete.

7.3.2 Ashburton

• Ashburton Upgrade - Tinwald Borefield

Final design drawings have been received and are being reviewed.

The application has been finalised and was lodged with ECan on 23 June. It was not possible to get written approval from the landowners affected by the protection zone in time to lodge with the application. It will be requested that the application proceed on a limited notification basis with those landowners. Negotiations with affected landowners will continue in regard to the water supply protection zone.

Discussions have been held with Cr Nelson in regard to impact of the project on the Plains Railway. It is envisaged that the physical works relating to the project can be coordinated to ensure there is little or no impact on activities at the Plains Railway.

• Ashburton Upgrade – Ashburton Domain Bore No:7

The application to vary the Ashburton water take consent was submitted on 13 May. This consent variation was approved effective 1 June 2011.

The contract for the building modifications at the Ashburton Domain was awarded to the utility maintenance contractor on 3 May. The completion date for the works was 17 June. The forecast completion date is now 8 July. This contract may be subject to liquidated damages.

The contract covering bore commissioning and the construction of the trunkmain from the new bore to the treatment facility was submitted to utility maintenance contractor for pricing on 10 May. A price for this work has been negotiated with the maintenance contractor. This is being reviewed by staff and is expected to be awarded under delegated authority on or about 4 July. The contract period is 7 weeks, giving a contract completion date of 19 August 2011.

7.3.3 Hakatere

Water Supply Upgrade

The UV unit requirement has been confirmed and the recommended unit has now been ordered from the supplier in Germany. Delivery is expected to take 10 weeks.

7.3.4 Methven

- **Water Supply Upgrade**

A workshop was held with the Methven Community Board on 27 June to discuss at overview level the upgrade and outcome of the pilot trial. The Board was also asked for input into a consultation approach proposed to ensure the community are aware of the project and have the opportunity to comment.

The key element to the proposed approach which was supported by the Board was the intention to have an open day at the Heritage Centre where the public could come along and see information on the scheme, understand what is proposed, why it's necessary, and ask questions.

7.4 Wastewater

7.4.1 Ashburton

- **Health and Safety**

Prices to install the required services at Wilkins Road and Ocean Farm are being sought.

- **Inline Effluent Screen / Pump Station Portal Building**

A minor design change has resulted in a further contract extension of three weeks for material supply and additional works at the site. The additional materials were expected on site on Friday 24 June. The magflow meter is to be relocated on or about 28 June with the floor slab extension to be poured the following day. This will allow the work on the portal building to proceed. The revised completion date is 14 July.

- **Maturation Pond Outlet Screen**

Fabrication of the screen and flooring was delayed at the Christchurch galvanisers (as result of the earthquake). All of these materials are now with the contractor. One week extension through to 24 June has been granted for the material supply issue, however, the forecast completion date is now 30 June 2011. This contract may be subject to liquidated damages.

- **Irrigation Bore Supply**

The bore report was submitted to ECan on 8 June. From here ECan get the report peer reviewed and if it is deemed satisfactory the application for resource consent can be lodged. Feedback on the peer review process is expected on or about 1 July.

- **Cox Street (Cass St to William St) Sewermain Renewal**

All work is complete. The engineering service provider is waiting to receive CCTV information from the contractor to review and approve physical works. The contract completion date is 13 June. The forecast completion date is 30 June 2011.

7.4.2 Methven

- **Main St / McMillan St (The Mall to South Belt) Rear Sewermain Renewal**

The contractor is still to achieve a satisfactory water test on manholes refurbished under the contract. The contract completion date is 13 June 2011. The forecast completion date is 30 June 2011.

7.4.3 Rakaia

- **WW-AG12, Removal of Standing Grass from Rakaia Wastewater Treatment Plant – Acton Road, Rakaia**

Harvesting of grass commenced on 4 December, and to date both blocks have received their second harvest. The harvest yield to date is 123,074 kgDM.

Soil tests have been taken from the harvest blocks and a nutrient analysis of the effluent is being undertaken to contribute to a fertiliser recommendation aiming to improve pasture growth.

7.5 Stormwater

7.5.1 Ashburton

- **Chalmers Avenue Gross Pollutant Trap**

The GPT is in transit although some components of the unit have been held up at Auckland customs. A price from the maintenance contractor for installation was expected on or about 24 June.

7.5.2 Mill Creek

- **Bank Stabilisation 2010/11 & 2011/12**

It is not possible to complete all the required site survey, design, consultation with property owners, and still meet the Council's requirement of tendering the combined projects in July. The shortest possible programme has a tendering date of 19 August. Allowing for a three week tendering period, tenders would close 9 September. Given the value of work, this contract award would be placed before Council on 22 September.

7.6 Stockwater

7.6.1 Network

The network has experienced some minor disruptions to service caused by variable flows in intake source rivers. Intakes at the Brothers and Methven Auxiliary were affected. Low flow at Methven Auxiliary Intake required more water turned into the intake channel while the Brothers Intake required some reinstatement work due to a higher flow. Contractors were engaged to remedy as soon as safe and normal flows were reinstated within a few days.

Stockwater Bylaw compliance; with dairy herd relocation for wintering. Stockwater rangers have noted an improvement in the number of properties fencing races prior to stock arriving on property this season. This is the result of the education and advertisement campaigns, with consistent and repetitive messages being supported by Bylaw enforcement.

7.6.2 Intake Metering

Work has commenced on the installation of metering infrastructure on the lower rate intakes. This work is necessary to meet the requirements of the *Resource Management (Measurement and Reporting of Water Takes) Regulations 2010*. These regulations came into effect on 10 November 2010.

Some of the sites are not being measured exactly at the consented point of take. This is not unexpected, but under the regulations requires formal approval from an officer from Environment Canterbury. This has resulted in some delay as those approvals are secured.

7.6.3 Race Applications / Closures

Since 1 July 2010, a total of 94 applications have been received, with two applications awaiting further signatures, three cancelled, one to be referred to Water Subcommittee and one referred to Council for decision. The remainder (87) have been approved.

Race closure measurements have been undertaken using measurements derived from the Council's GIS and indicate completed closures at 316,185 metres.

7.7 Solid Waste Management

7.7.1 Ashburton Resource Recovery Park

The maintenance and operations contract is operating satisfactorily. Onsite developments include:

- reuse shop internal refurbishment and development of outside area
- installation of CCTV security system
- design and attach safety walkways to bus ramp
- installation of site security key system
- alterations to public area of tipping face to reduce the risk of slips and falls into the pit.

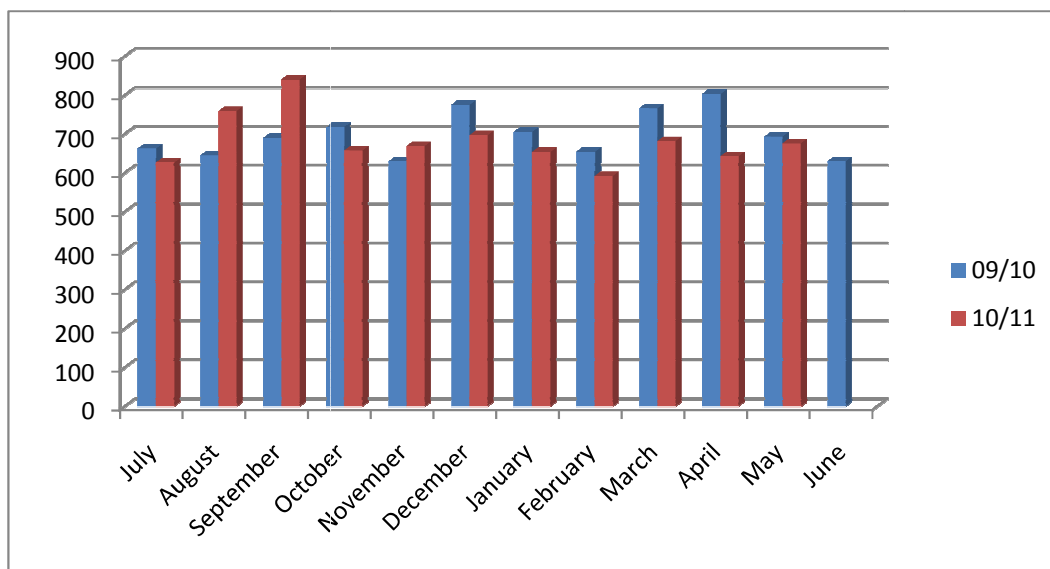
7.7.2 Residual waste

Residual waste management at the Ashburton resource recovery park is operating well with average tonnages of 20.64tonne (21 t max) being achieved in May per container load to Kate Valley. 3.6 tonnes of materials were recovered from the residual waste disposal area.

Total diversion for 2009/10 74.59 tonne

Year to date 2010/11 58.85 tonne

Residual waste transported to Kate Valley (tonnes)



640 tonnes of residual waste was transported to Kate Valley in May.

Budget for transport/disposal contract 2010/11	\$1,367,676	8500 tonnes
Contract costs to May 2011	\$1,017,168	7461 tonnes
Projected cost and tonnages to 30 June 2011	\$1,106,168	8111 tonnes
Total tonnage to Kate Valley 2009/10		8376 tonnes

7.7.3 Waste Minimisation

Education:

- Mastagard has employed a new educator in response to recent staff changes.
- Contact has been made with all schools and preschools via an introductory letter, with follow-up visits well underway. This has resulted in immediate success with a number of forward bookings now confirmed.
- Two school visits to the site in May provided an opportunity for students to study individual waste types with a focus on the 3R's, Recycle Reduce and Recover.
- A four week advertising programme was commenced in June and placed in three district newspapers. The programme covers:
 - Kerbside recycling, accepted materials and correct placement at kerbside
 - Home composting of garden and kitchen waste including Bokashi system
 - Hazardous waste, safe disposal facility at the ARRP
 - Rural recycling facilities, acceptable materials, locations

There will be two feature articles covering:

- The 3 R's of solid waste management
- Why Ashburton district's recycling programme works
- Why not use wheelie bins for recycling
- Why an official rubbish bag costs what it does
- Hazardous waste identification and safe disposal

There will be two free seminars held at the Education Centre for the following:

- Home composting and worm farms
- Bokashi foodwaste composting

A survey will be conducted with all district schools in the fourth term asking for feedback on Mastagard's education programme focusing on suitability and the likelihood of adoption into their annual curriculum.

Construction and Demolition Materials:

Investigation has started into the availability of land for the sorting and processing of construction and demolition materials in response to meetings held with the Contracting sector to include:

- Land use and resource consent requirements
- Volume and types of material
- Location of site
- Access
- Monitoring and management
- Compliance responsibility
- Consent ownership – separate or shared
- Extending the range of materials currently accepted as cleanfill

Issues and options identified from the above investigation will form the basis of a report to Council for consideration.

7.9.3 Intersection Campaign

An intersection awareness campaign that has recently been run in The Courier has been completed. Different types of local intersections were photographed and are being published in the paper along with some information on how to use each intersection. A local photographer and the Parks Department of the Council donated their time and equipment for this campaign. It was hoped that the Christchurch Intersection Team would be able to come down and take part in the campaign, but due to the continuing trauma from the February earthquake, this is not possible. This has been put on hold for the time being.

7.9.4 Miscellaneous

The Road Safety Coordinator attended a Road Crash Day Forum run by Maureen Bishop from ECan – the theme was “6 feet tall and bulletproof” and it focused on targeting teenagers.

The Road Safety Coordinator spoke at the Willowby Women’s Institute meeting about being a Road Safety Coordinator.

End of year reporting to NZTA and finalising budget for end of financial year has been undertaken.

7.10 Contracts Awarded

NO.	CONTRACT	CONTRACTOR	DATE / VALUE \$	NO. OF TENDERS / RANGE	ENGINEER’S ESTIMATE
AM-AL	ADC Operations Professional Services 2011- 2014	Opus International Consultants Ltd	26/5/2011 \$2,637,231	2 \$2,637,231 to \$3,397,206	\$3,756,249

7.11 Customer Service Request Reports

CRM reports for the year to date and the reporting period are attached. **Pages 48-51**

7.12 Methven Community Board

The Methven Community Board will meet on 4 July 2011. Any matters requiring the Committee’s consideration will be tabled at the meeting on 7 July.

R ROUSE
Operations Manager

Ashburton District Council Report

FILE NO: 0500-07-07
DATE: 7 July 2011
REPORT TO: Operations Committee
FROM: Water Subcommittee
SUBJECT: Unconfirmed Minutes – 22/6/2011

8 Water Subcommittee

Report and Minutes of the **Water Subcommittee** meeting held in Council Chamber, on Wednesday 22 June 2011, commencing at 9.30 am.

Present: Councillors D Nelson (Chair); A Totty, N Brown, J Leadley, S Wilson & P Reveley.

In attendance Mayor A McKay; Crs D Favell and D McLeod; Operations Manager, Water Services Manager, Senior Stockwater Ranger & Administration Officer (minutes).

Confirmation of Minutes – 19/5/2011

That the minutes of the Water Subcommittee meeting held on Thursday, 19 May 2011, be taken as read and confirmed.

Totty/Leadley

Carried

Matters Arising

Acton

Cr Brown reported that the Conservation Order has been to the Ashburton Water Management Zone Committee. Affects will be minor. Operations Manager reported that Ngai Tahu have some concerns as they do not want the water to be used for irrigation. ADC are to respond.

Stockwater Race Closure – Application Number 110206 (100% Support)

The Subcommittee considered a draft report to Council, recommending closure of the subject race.

Administration Officer and Senior Water Ranger explained the background to this race closure which has full support from all affected properties owners. This closure will enable a higher level of service in a neighbouring race which is currently serviced by Moffatts Drain. The property above the soak hole location is totally dependent on stockwater as it is a dry stock block.

That the Subcommittee supports the report recommendation to close the stockwater race from PN 4793 – LOT 2 DP 6062 down to two drains on and alongside PN 4606 – LOT 53 57 Pt 55 DP 885 – a total distance of 13.6 kilometres, effective from 8 July 2011."

Wilson/Reveley

Carried

Rakaia Barrhill Race Closure – Working Group Update

Operations Manager explained how the working group has been working, with an information handout and copy of draft letter to be sent to all affected property owners. Representatives from Rakaia Settlement, Barrhill area and Council are working through closure options, alternatives and issues to be addressed. Two meetings have now been held – options have been looked at and a short list prepared. Next meeting is to be held 6 July 2011, with more details on shortlisted options and costings to be discussed.

Working group is working well and representatives are reasonably happy with the process and progress. Two visitors at second meeting but had no speaking rights. Meetings are being well run by Cr Nelson.

Have costings been discussed? Not at length, only touched on at this stage but it will be discussed in more detail at the next meeting.

What is affordable? Will start to look at and will be a key topic at next meeting.

How can a total closure not be efficient if the race is closed as it saves all that water? Efficiency of conveyance has been considered not water efficiency.

How is the Rakaia/Barrhill Race Closure process coming along? Summary of survey results was provided to the second meeting. Further analysis is to be completed.

Acton Irrigation Financial Contribution to Fish Screens

Water Services Manager spoke explaining origin of letter received from contractor for Acton Irrigation Scheme, requesting \$40,000 to recover costs associated with putting in fish screen. Question if fish screen meets the standard conditions of resource consent – copy of conditions distributed. \$5,788 allowed in current budget for design/consultation of fish screens.

Cr Brown explained that Environment Canterbury has visited the site of the fish screen and have 'ticked the box' on the resource consent. ECan were involved in part of the design, which involves pipes in cages underwater, surrounded by boulders. There will be some problems with silting and boulders will need to be moved around periodically to remove silt build up.

As budgets have been allocated in the previous three years but not used, there is budget available to meet the request of \$40,000. It was felt that if this structure can meet the certification required under the consent it would approve the payment. Will not require the \$5788 currently in the budget, as structure has been built already.

Similar structure has been installed in the South Ashburton River for RDR and works successfully and has been approved by Fish & Game.

Who maintains the silt build up? ADC will contribute a portion towards maintenance expenses, as agreed in the contract.

The Subcommittee resolved that the following recommendation be considered by the Operations Committee –

That Council approves a contribution of \$40,000 exclusive GST to Acton Irrigation Limited for the construction of fish screening at the Acton Intake subject to:-

- Confirmation that the structure meets the certification requirements as detailed under the Council's stockwater consent.

Reveley/Leadley

Carried

Cr Brown abstained due to conflict of interest.

Water Services Manager has spoken to writer of letter to explain the delay in replying.

Strategic Review of Stockwater Race Closures

Operations Manager explained there is a need to have a more detailed meeting to discuss a review of the future of race closures. The reason being a combination of new resource consent conditions, water transfer opportunities and a recent notification from the Historic Trust that anything over 100 years old is not to be physically altered.

It was agreed that the water subcommittee would hold a workshop, inviting all Councillors to discuss a strategic review of stockwater race closures in preparation for the Long Term Plan, probably to be held in August 2011. Workshop may take a full day, with possibly of bus trip for half day to help clarify points being raised.

Zone Committee has a working group looking at flows in the Ashburton River and stockwater is part of that project.

Asked for a planner to be available to answer any technical questions.

Trade Waste

Has any waste water been discharged into water ways recently? No, not aware of any.

Tinwald Pump Station

Has work commenced on the Tinwald bore? Consent has been lodged for water extraction and no physical works will be started until the consent has been issued.

Mt Hutt/Riverbank Scheme

Operations Manager has been in discussion with applicants in relation to this scheme and consent requirements. \$15,000 currently approved by Council for this work – additional work means an additional \$1,500 will be required. As the work is related to the consenting of an infiltration gallery the Mount Hutt Riverbank Group will be asked to fund the budget shortfall.

The meeting concluded at 10.30 am.