



## We often hear and talk about the ‘S’ word . . .

**W**e often hear, and talk about, the “S” word – sustainability – when discussing the current issues and future direction of our town and district. To sustain the environment we enjoy, to leave it at least as well, if not better than when we found it, through our guardianship; and to do all this while remaining financially viable.

Water is THE issue facing our district. Decisions currently being made over the water available in our district are going to have a huge impact on our future. How much comes in,

how much goes out and what it is used for on the way through.

Who has priority, what is the most efficient and effective use, AND who is right?

As urban Councillor Sparks commented in the June District Diary, the strength of our district is underpinned by our rural structure. Underpinning this is access to a reliable water supply. We only have to look back 40 years – or to the Waikato this year – to see where we would be without this resource.

Our rivers have been challenged this season with



**Councillor comment with Cr Jos Everest**

strong flows and have withstood the test. Thanks to the team who spray, plant and realign our rivers, and maintain our stop banks to ensure flood capacity.

A job not many of us appreciate until the heavens open.

The completion and opening of the wastewater upgrade and associated Ocean Farm shows

just what can be achieved through the treatment of a product that, even by its name, shows what we used to think of it . . . waste! Not any more for this precious resource.

It is always a pleasure to come in contact with the many passionate volunteers in our district – many of whom go unheralded in their quest to contribute.

Two of these groups are the tireless volunteers on the Rakaia and Methven walkways. Their efforts will culminate in the joining up of these two projects to provide the first of many

walking/cycling trails sited along our rivers and waterways – highlighting these breathtaking assets for us and our visitors to enjoy.

As we approach the 150th celebrations of the first settlers in our district, we ponder on where we will be in another 150 years. We are not all 3rd generation Ashburtonians, but our grandchildren might be.

We are making considered “S” choices to provide for the future – for them.

Love it or hate it, the “S” word is the right word for us to moverward.

## What do we want for our future?

What do we want for our future in Ashburton District and what should Council be providing for the community over the next 10 years?

Council wants to hear what the community thinks is important for the next 10 years and have included a survey on the back page of the District Diary for residents to provide their views.

Work on renewing Council's 10 Year Community Plan. The plan details what facilities and services Council is proposing to provide over the next 10 years, how much it is going to cost and who will be required to fund it.

The full draft Ashburton District 10 Year Community Plan will be available for community consultation in April 2009.

Council's community planning manager, Gavin Thomas, says the Community Plan is Council's most important document and it is vital the community gets involved in the various consultation processes that are part of it. The Plan details what Council proposes to be delivering in terms of services and facilities for the community. Everything Council does comes back to this Plan", he said.

"Council develops a 10 year Community Plan every 3 years, and work programmes are pretty well locked in through this time frame. This is why it is important the community participates in the consultation, Mr Thomas said. If residents miss out on this process they effectively miss out for the full three years."

There will be various projects that feed in to the Community Plan, starting with a review of Council's Revenue and Financing Policy, and these will all have consultation processes associated with them.

**What Do You Think is Important for Our District Over the Next 10 Years?**



## Who pays what rates?

Roads, water, rubbish, community events – whatever Council provides, someone somehow will have to pay for them. Who does pay and how is decided through Council's Revenue and Financing Policy. Council has begun reviewing this policy as a first step to developing its new 10 Year Community Plan

Community planning manager Gavin Thomas says "Councillors and staff are currently working through a review of the policy to come up with a revised version for the community to comment on. We expect the draft Revenue and Financing Policy to be available for community consultation in early September", Mr Thomas said.

"This is the first project in developing the 10 Year Community Plan. We need to review this policy review first, said Mr Thomas, so that we can develop 10 year budgets with accuracy and know who will be paying for what and what impact that is likely to have."

The policy looks at who is able to benefit from each activity provided by Council, and who should pay for that activity. "There is usually a fair bit of debate around who actually benefits and who should pay", said Mr Thomas. "Obviously there are always issues such as affordability that can see changes to how some activities are funded, other than purely who benefits. Ashburton District Council looks to ensure the prime beneficiary pays wherever possible, and as a result has a policy with a lot of targeted rates, he said. This is different from many Councils which fund activities mostly using a general rate."

The consultation process for the Revenue and Financing Policy review will be advertised extensively in early September. If people want to have consultation documents mailed or emailed to them when these are available they can contact the Council offices to arrange for this to happen.

**Fill out the form on the back page**

<b>In this issue</b>	Pedestrian safety . . . . . Page 2	Councillor receives RMA accreditation. . . . . Page 5
	150th anniversary plans . . . . . Page 3	What's happening at the Gallery & Museum . . . . . Page 6
	Ashburton District Tourism happenings. . . . . Page 4	New books at the Library . . . . . Page 7
	Our gardens are ready to bloom. . . . . Page 4	Have your say on the 10-year plan . . . . . Page 8

# Pedestrians — check before you step!

The local road safety campaign “check before you step” started recently with the aim of increasing driver awareness of pedestrians and also to encourage pedestrians to consciously stop and check for traffic before crossing the road, regardless of whether the crossing point is controlled or not.

As part of this campaign, pedestrian crossings, traffic lights and pedestrian refuge points will be observed and a

small survey will be completed to measure how safe our local pedestrians feel they are. If you are asked to participate, your contribution will be greatly appreciated.

During the past five years there have been 19 reported crashes between a pedestrian and a vehicle on Ashburton District roads. The records show that one person was killed, five received serious injuries and 15 received minor injuries.

Fifteen of the “collisions” occurred while the pedestrian was attempting to cross the road. Most people cross the road regularly during a normal day and possibly give more thought to their destination instead of how or where they are crossing.

Without doubt, the shortest route is not always the safest.

Four of the pedestrians injured were less than 10 years old so it is crucial for young children to be taught how, where

and when to cross the road. Young children have limited skills when it comes to judging the speed and distance of traffic and may not always make rational decisions when crossing the road. In this instance, the driver needs to be alert and be prepared for unpredictable behaviour.

However, walking should always be safe and enjoyable for everyone and the following tips can make your journey safer.

## CROSSING AT TRAFFIC LIGHTS

Traffic lights are installed at busy intersections to allow traffic to flow and turn safely. At most intersections there are also special pedestrian lights that will allow short periods for pedestrians to cross safely.



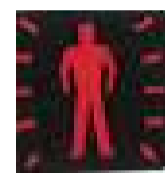
**WAIT:**

Do not cross the road. Wait for the green pedestrian light.



**CROSS:**

Check for traffic. Start to cross the road. Drivers must give way.



**FINISH CROSSING:**

When the red pedestrian light is flashing, finish crossing the road — do not start.

Drivers must still give way

## CROSSING AT PEDESTRIAN CROSSINGS

If you are within 20 metres of a pedestrian crossing, you must use the crossing to cross the road. Pedestrians must not step out to the pedestrian crossing suddenly if there are vehicles so close to the crossing that they are not able to stop.

Whenever possible, try to make eye contact with the driver before beginning to cross the road.

Vehicles should always give way to

pedestrians on crossings, regardless of which side of the crossing they are walking, unless there is a pedestrian refuge in the middle of the crossing.

### Using a pedestrian refuge

Some refuges are placed on roads where there are no pedestrian crossings. The refuge simply allows a safe place for pedestrians to wait until the second lane

is clear of traffic.

As vehicles are not obliged to stop, the decision to cross is the pedestrian's and waiting for sufficient space to cross safely is essential.

### In school areas

Some schools in our district have crossings that are patrolled for short periods before and after school by students, parents and teachers.

- Stop if the school patrol sign is down — give way to pedestrians on both sides of the crossing.
- Slow down and be prepared to stop around schools at all crossing points
- Keep plenty of space between you and the vehicle in front
- Take extra care to watch for young pedestrians between parked cars

Ngaira Tinning  
Road Safety Co-ordinator

## New faces at the council . . .



Jamie Grant is a new face you'll see in the Ashburton Public Library. Jamie recently joined the library team as a library assistant. Her role encompasses all facets of library work including general customer service, book enquiries and circulation, book-binding and book repair work. Prior to this position, Jamie worked as a teacher aide at Ashburton College and at PPCS for two years. The born and bred local is a sporty lady, enjoying both touch and tennis. Her favourite author is American mystery/thriller writer Michael Connelly.



Allison Ferguson joined the building department at the council as a building systems administrator on July 28.

She is tasked with monitoring the building consent procedures undertaken by the council's building inspectors and in ensuring that the current national building accreditation process is followed. The south-west Scotland native's previous work experience has included spells in the administrative, legal, financial areas, more recently at Dunedin City Council. The Methven resident and mother of three boys is a keen jogger and is looking forward to taking up mountain biking with her husband in the near future.



Naadia Te Moananui recently joined the environmental services department as an administration assistant in the property numbering area. Naadia allocates and reissues rural and urban property numbers, as well as issuing and putting up any new RAPID numbers around the district. Her seven years as a signaller in the New Zealand Army means that she is very familiar with the use of GPS, which assists her in the part-time role. The mother of two young girls is a keen netballer, rugby player, volleyballer and lover of the great outdoors.

# 150th Anniversary of settlement of Ashburton township

## A little snippet of history

William Turton was granted a licence to have the first accommodation house in Ashburton on November 20, 1858.

Until the railway connection around about 1874 there was little to show that Ashburton would ever be anything more than a staging point for coaches on the almost empty prairie. During the 1860s a few unpainted, wooden cottages appeared, but most of them – those of Jamieson, Chalmers and Hunt — were built at some distance from the ford and accommodation house. Louis Berliner opened the first local store, believed to be some time in 1865.

## Progress report for celebrations 2008

Progress is being made for the celebrations for the 150th anniversary of settlement in Ashburton township.

It is intended that the festivities will begin with the full council meeting on Thursday, October 31. Councillors and staff are dusting off various glad rags and will be wearing clothing that represents the fashions of any decade from 1858 to the current time.

Direct descendants of the Turton family will be invited to join the mayor and councillors for either lunch or afternoon tea on October 31, 2008. A special tree planting ceremony and/or visit to the Turton Cairn by the Ashburton Bridge about this time has been suggested but details have yet to be

confirmed.

Throughout the month of November there will be many activities arranged by individual organisations but co-ordinated by the Ashburton District Council Heritage Sub Committee. This committee consists of Cr Rod Beavan (chairman), Cr Bev Tasker, Cr Jac Sparks, Michael Hanrahan (curator of the museum), Don

the next school holiday programme at the Ashburton Library.

## Sunday, November 2

Planning is underway for possible cemetery tours at the Ashburton cemeteries. Along with that we are looking at promoting families having a



Wheat arriving in West Street during the 1890s

Wilson, Liz Quaid, Pam Burdett, David Askin and Cheryl Yates.

The Ashburton A&P Show in on Friday, October 31 and November 1 and there will be displays and events planned for these two days.

Ashburton Art Society Cash 'n Carry is on from October 28 through to November 2.

No celebration would be complete without the traditional colouring-in competition for the schools and these will be displayed at a venue to be notified later.

The purpose of this is to encourage our younger citizens to be involved in heritage but additional to this a workshop on how to colour-in is intended to be held during

picnic or cup of tea with their descendants on that day.

The Ashburton Business Association will be organising a competition for window displays during November inviting various businesses to be part of the celebrations.

The Ashburton Museum opening of time line display on Saturday November 8.

The Returned Services Association is currently considering holding a celebration on November 11, 2008, to commemorate Armistice Day.

The Ashburton Trotting Club has a trotting meeting on Thursday, November 13, in which the club intends to acknowledge the 150th anniversary and during the month of November the

museum on the Ashburton Racecourse will be open to the public on Tuesdays when work outs are held.

St Andrews Presbyterian Church is having a festival of flowers/arts and crafts on Saturday, November 22, and a special church service on Sunday, November 23.

Other churches will be involved in the 150th celebrations as they have historic architectural items of interest, beautiful stained glass windows and the role they have played in the establishment of Ashburton. Their various activities are still to be confirmed.

The Tinwald Festival is scheduled to occur on Sunday, November 23, and this will involve many activities, which will form part of the theme of our celebrations.

The Ashburton branch of the NZ Historic Places Trust is having walking tours on Sunday, November 30, throughout the township to visit heritage sites.

Other organisations that may be involved in activities are service clubs, Youth

Council, Toastmasters (possible debate), Film Society competition, old time film screenings at the theatre, Borough School photographic display, Ashburton Library various displays, domain trees – tours with David Askin, picnic in the domain including hopefully music and dancing etc. We are considering having a Sunday roast on November 30 to bring the curtain down on the 150th celebration of settlement in Ashburton township.

There are still quite a few activities to be further discussed and confirmed at this stage.

The Heritage Sub Committee wants to involve as many people as possible. If there is any organisation out there who wishes to arrange an activity for their organisation during the month of November then please contact Cheryl at the Ashburton District Council. We will then include the activity in the calendar of events and promotion and advertising, which will occur in the month of October.



An Ashburton Wool Sale. Local sales were held c. 1886-94

## From a dairy lane to a trailer load of shingle . . .

We do a lot more than just roading!

- ✓ Concrete Shingle
- ✓ Screened Soil
- ✓ Crusher Dust
- ✓ All Shingle Supplies

also specialists in:

- Hotmix driveways
- Tennis courts
- Machine laid re-inforced kerbing
- All chip sealing
- Loaders, trucks, graders, rollers

Open Saturday morning 7.30am-11.00am

**Fulton Hogan**

Cnr William Street & The Terrace, Ashburton.  
Ph 308 2418 A/H Bryan 308 8904

Fill your trailer or let us deliver to your place

Dairy Lane Construction



- Zero Waste and Zero Carbon Conference  
20/08/2008 Hotel Ashburton
- Southern Opera (Love Life and Laughter Concert)  
21/08/08 Ashburton Trust Event Centre
- Wastebusters Wearable Arts Awards  
22/08/08 Ashburton Trust Event Centre
- K Cup (Kinder Cup)  
23/08/08-27/08/08 Mt Hutt
- Beatlemania - On Tour  
23/08/08 Ashburton Trust Event Centre
- Methven Craft Fair  
23/08/08-24/08/08 Mt Hutt Memorial Hall
- Ashburton Art Gallery - Margaret Digby - Town Watch  
23/08/08-28/09/08 Ashburton Art Gallery
- Ashburton Art Gallery - Niki Hastings-McFall-Polysynthesis  
23/08/08-28/09/08 Ashburton Art Gallery
- Association of Presbyterian Women Regional South Island Conference  
5/09/08-7/09/08 St Andrews Church
- Methven Trotting Club Meeting  
7/09/08 Mt Harding Racecourse - Methven
- Adult Learners Week  
8/09/08-14/09/08 Programme will be published in the local press
- Australia/New Zealand Continental Cup  
9/09/08-12/09/08 Mt Hutt and The Blue Pub
- Ashburton Musical Club - "Youth of Note" Concert  
13/09/08 Sinclair Centre
- Rakaia Craft Market  
14/09/08 Rakaia Green, in front of the Salmon
- St Andrews College Pipe Band  
14/09/08 Ashburton Trust Event Centre
- Ashburton Art Gallery - MUKA Youth Print Exhibition  
17/09/08 Ashburton Art Gallery
- Kids for kids - Shake, Rattle & Roll  
18/09/08-19/09/08 Ashburton Trust Event Centre
- Mount Hutt College - College Fair  
20/09/08 Mount Hutt College Methven
- Boulevard Day  
22/09/08 East Street, Ashburton
- Surf Snow Cup  
24/09/08-28/09/08 The Blue Pub

# Our gardens are ready to bloom

*"If winter comes, can spring be far behind?"*  
*(Percy Bysshe Shelley)*

In the midst of a long, cold, wet winter it is indeed heartening to look forward to spring and the burst of colour that accompanies it.

Ashburton District Council parks manager David Askin and his team have a programme of spring plantings planned that is sure to gladden the hearts of winter-weary souls and ensure the town is looking a picture.

With spring just around the corner the following list of plantings holds the cheering promise of a riot of vibrant colour throughout Ashburton in the very near future.

### Ashburton Domain

Main entrance - North entrance bed No 1: Wallflower Primrose; Tulips Royal design; Edge: Pansy Matrix blotch red.

Entrance Beds Nos 2 and 3: Wallflower mixed; Tulip Ile de France; Edge: Pansy buttermilk.

Gate and flag beds - Gate bed No 1: Iceland Poppy mixed; Edge (double): Pansy Fama True Blue.

Gate bed No 2: Polyanthus PG Bicolour; Tulip - Yellow with loop - Oxford Elite; Edge (double) Primula Acaulis Primlet red shades.

Flag pole: Iceland Poppy white; Pansy Matrix blotch red; Edge: Bellis Habanera White with red tip.

Cedar beds - Cedar Bed No 1: Myosotis Royal blue; Tulip Roi du Midi; Edge: Pansy Fama Dark Eye - lemon.

Cedar Bed No 2: Myosotis Royal White; Tulip Leen vander Mark; Edge: Pansy Fama True Blue.

Sundial beds - Sundial Bed No 1: Polyanthus Supernova cream; Tulip Red Parade; Edge: Viola Carpet Yellow Heart - blue.

Sundial Bed No 2: Polyanthus Supernova Golden Yellow; Tulip ad Rem; Edge: Viola Carpet Antique Blue Wing.

Sundial Bed No 3: Polyanthus Supernova blue; Tulip Golden Parade; Edge: Viola Carpet Lemon Wing yellow.

Woodlands Beds and Point Woodland Beds No's 1 and 2: Pansy Imperial Antique



Shades; Hyacinths L'Innocence; Edge: Viola Sorbet Plum Velvet.

Point Garden: Pansy - mixture of different varieties; Hyacinths.

Southern Beds - Southern Bed No 1: Myosotis Sylvia mixed; Tulips Monte Carlo; Edge: Viola Carpet Yellow Heart - blue.

Southern Bed No 2: Myosotis Sylvia mixed; Tulips - Monte Carlo; Edge: Viola Carpet Lemon Wing - yellow.

Hydrangea Border: Mixture Primulas.



West Street, Wills Street and layby

West and Wills Streets No 1: Pansy Daffodil blend; Tulip Verona; Edge: Viola Carpet Yellow Heart blue.

West and Wills Streets No 2: Pansy Fiesta blend; Tulip Orange Princess; Edge: Viola Carpet Antique Blue Wing.

Layby: Polyanthus C A Wood - special antique shades; Edge: Inner: Tulip Princess Irene; Myosotis Bluesylva; Edge - outer: Pansy Buttermilk.



Baring Square North End: Polyanthus Pacific Giants bicolor shades mixed; Tulip Kees Nelis; Edge - inner: Primula acaulis Paloma Pink; Edge - outer: Myosotis Pompador.

Back Centre: Primula acaulis Paloma - white, yellow and wine red.

South End: Pansy M G MK11 Patricia; Hyacinth Purple Sensation; Edge: Pansy Buttermilk.

Front, left and right cenotaph: Wallflower Scarlet; Tulips Francoise; Edge - inner:

Calendula Fiesta Gitana mixed; Edge: Myosotis Ultramarine.

Bulges North and South: Pansy Carmel; Edge: Desert Sunset blend with a white band of Pansy Carmel Clear White through all four beds.

Church triangles Methodist triangle: Pansy Cats Series mixed; Tulip Monsella; Edge: Myosotis White Surf.

Catholic Triangle No 1: Polyanthus Supernova Yellow; Tulip Batavia; Edge: Pansy Matrix Blotch blue.

Catholic Triangle No 2: Polyanthus Supernova Cream; Tulip Leen Van der Mark; Edge: Pansy Matrix Blotch Red.

Archibald Street Semi Circle: Polyanthus Supernova - Blue Sky; Tulip Francoise; Edge: Pansy Fama Dark Eye - lemon.

Service Clubs: Wallflower Bedder Orange; Tulip Pretty Women; Edge: Myosotis Bluesylva.

Welcome: Ornamental Kale Pidgeon mixed; Edge: Ornamental Kale Kamone white.

Roundabouts Car parks and Oak Grove Oak Grove/Harrison Street roundabout: Polyanthus CA Wood Formula mixed; Tulip

Temples Favourite; Edge: Pansy Carmel Clear Yellow.

Roundabout No 1: Wallflower Bedder Golden; Tulips Royal Design; Edge: Myosotis Bluesylva; Viola Hobbit - Cream Yellow Lip.

Roundabout No 2: Wallflower Bedder Primrose; Tulips Pretty Women; Edge: Myosotis Rosylva; Viola Sorbet - Plum Velvet.

Roundabout No 3: Wallflower Bedder Orange; Tulips Queen of Sheba; Edge: Myosotis Snowsylva; Viola Sorbet - Sunny Royale.

Bulge North: Polyanthus Supernova - Golden Yellow; Tulip Daydream; Edge (double): Pansy MGII Sherry.

Bulge South: Polyanthus Supernova - cream; Tulip Purple Prince; Edge (double): Pansy MGII Patricia.

Wall: Polyanthus Supernova - Blue Sky; Tulip White Dream; Edge (double): Pansy MGII White with Blotch.

Roundabout No 1: Calendula Fiesta Gitana mixed; Edge: Myosotis Ultramarine.

Roundabout No 2: Abba; Edge: Viola Hobbit Pippin Turk.

Chapel: Polyanthus C A Woods mixed; Tulips Temples Favourite.

Courtyard: Wallflower Bedder Gold; Tulip Lily Schrier; Edge: Myosotis White Surf.

Maternity: Polyanthus Supernova cream.

Dentist Bed No 1: Myosotis Royal Blue; Tulips Temples Favourite; Edge: Pansy Carmel Clear Orange.

Dentist Bed No 2: Myosotis Royal White; Tulip Ile de France; Edge: Pansy Matrix Blotch Blue.

Corner bed: Polyanthus Supernova Blue Sky; Tulip Golden Parade; Edge: Polyanthus Supernova Golden Yellow.

Plaque bed: Pansy Carmel Clear mixed; Hyacinth Purple Sensation.

Tuarangi Calendula Touch of Red mixed; Tulip White Dream, Edge: Myosotis Royal Blue.

Courtyard: Polyanthus C A Wards mixed; Tulip Temples Favourite.

Front House: Polyanthus

Methven Raised bed No's 1 and 2: Primula Acaulis Primlet red shades; Hyacinths L'Innocence; Edge (double): Bellis Pominetlee White.

Raised bed No's 3 and 4: Polyanthus Waikato Improved Special Blend; Tulip Golden Parade; Edge: Viola Carpet Lilac Wing Yellow.

Ashburton Hospital Ward 1 No 1: Wallflower mixed; Tulip Ros du Midi; Edge: Wallflower Bedder Gold.

Ward 1 No 2 and 3: Polyanthus Supernova cream; Tulip Red Parade; Hyacinth L'Innocence; Edge: Primula Primlet Sunrise.

Main Entrance: Wallflower Bedder Orange; Tulip Queen of Sheba; Edge: Myosotis Ultramarine.

Outpatients: Pansy Tofa mixed; Hyacinths Sky Jacket; Edge: Myosotis Pompador.

Administration: Pansy Carmel Clear Mixed; Tulip

## Councillor achieves RMA accreditation

Cr Robin Kilworth (pictured) has been accredited as a Resource Management Act (RMA) commissioner or chairperson by the Minister for the Environment.

In her role as a commissioner or chairperson she is able to chair private plan changes and resource consent applications.

The Resource Management Amendment Act 2005 introduced new requirements for the accreditation of panel members at local hearings.

As a result all chairs and the majority of hearing panel members must be accredited.

Initial accreditation attained by way of the Making Good Decisions programme is valid for three years with the period of validity extended to five years after accreditation is granted for the second time.

Having achieved her first accreditation in 2005, Cr Kilworth opted to take the process a step further by applying for a chairing endorsement which required her to attend seminars and sit examinations conducted by the University of Auckland in association with the Ministry for the Environment and Local Government New Zealand.

The course was far more advanced and demanding than the training for her initial certificate.

The Making Good Decisions Programme is designed to help councillors, community board members and independent commissioners to make better decisions under the RMA.

The programme that was launched in February 2005 provides them with the skills they need to run fair and effective resource consent, plan change and designation hearings and make informed decisions.

Cr Kilworth's accreditation is valid until June 2013.

Three other Ashburton District Councillors have also achieved initial accreditation.

They are deputy mayor John Leadley and Cr Rod Beavan who were accredited in 2006 and Cr Bev Tasker who passed the course in 2008.



Cr Robin Kilworth (pictured) has been accredited as a Resource Management Act (RMA) commissioner or chairperson by the Minister for the Environment.

In her role as a commissioner or chairperson she is able to chair private plan changes and resource consent applications.

The Resource Management Amendment Act 2005 introduced new requirements for the accreditation of panel members at local hearings.

As a result all chairs and the majority of hearing panel members must be accredited.

Initial accreditation attained by way of the Making Good Decisions programme is valid for three years with the period of validity extended to five years after accreditation is granted for the second time.

Having achieved her first accreditation in 2005, Cr Kilworth opted to take the process a step further by applying for a chairing endorsement which required her to attend seminars and sit examinations conducted by the University of Auckland in association with the Ministry for the Environment and Local Government New Zealand.

The course was far more advanced and demanding than the training for her initial certificate.

The Making Good Decisions Programme is designed to help councillors, community board members and independent commissioners to make better decisions under the RMA.

The programme that was launched in February 2005 provides them with the skills they need to run fair and effective resource consent, plan change and designation hearings and make informed decisions.

Cr Kilworth's accreditation is valid until June 2013.

Three other Ashburton District Councillors have also achieved initial accreditation.

They are deputy mayor John Leadley and Cr Rod Beavan who were accredited in 2006 and Cr Bev Tasker who passed the course in 2008.

## Urban road reseal programme 2008-2009

ASHBURTON	Cox Street
Baring Square West Full Length	East Street to Cass Street
Pages Road	William Street
Digby Place to Queens Drive	Dobson Street to South Street
Kermode Street	Racecourse Road
East Street to Mona Square	SH 1 to End of K&C Square
Kermode Street	METHVEN
Mona Square to William Street	Kilworth Street
Kermode Street	Mackie Street to End (Gate)
William Street to Chalmers Avenue	Mackie Street
Mona Square Full Length	Barkers Road to Methven Chertsey Road
Cass Street	Barkers Road
Mona Square to Dobson Street	Hall Street to Mackie Street
Cameron Street	Barkers Road
William Street to Chalmers Avenue	Mackie Street to "Blue Pub"
Wakanui Road	Spaxton Street
Chalmers Avenue to Trevors Road	Blackford Street to Forest Drive
Oxford Street	RAKAIA
Wakanui Road to Nelson Street	Rolleston Street
Willow Street	Tancred Street to Burrows Road
Beach Road to South Street	Railway Terrace West
McMurdo Street	Bowen Street to Elizabeth Avenue
Wilkin Street to Manchester Street	Rakaia Terrace
Lagmhor Road	West Town Belt to Cridland Street
Bryant Street to Tinwald	Cridland Street
Westerfield Mayfield Rd	Normanby Street to Rakaia Terrace
Wellington Street	Railway Terrace East
Chalmers Avenue to Trevors Road	SH 1 to Elizabeth Avenue
Grey Street	Rollleston Street
East Street to William Street	Railway Terrace East to SH 1
Grey Street	MAYFIELD
William Street to Chalmers Avenue	Lismore Mayfield Road
Aitken Street	Arundel Rakaia Gorge Rd to Urban Boundary

## Kerbside recycling: Some handy tips

Ashburton, Methven, Rakaia and most townships in the district receive kerbside recycling collection. Householders place recyclables in 45 litre green plastic bins at the kerbside for weekly collection.

To prevent the wind blowing recyclables around your street, bins need to be carefully packed. Lighter items, like plastic bottles, must be put on the bottom of the green bin. Heavier items are then placed on the top, for instance, paper packed into a plastic bag.

Additional tips are: It is advisable to permanently mark recycling bins with your street number. This helps you to identify your bin and also aids the runners and sorters working on the recycling bus.

Remember that you need to put all refuse bags and recycling out at the kerb-side by 7.30am on the collection day for your area.

Thank you for supporting our community recycling programme.

## ASHBURTON TRUST event centre UPCOMING EVENTS

- 20th August - Kay Haines Canada, Alaska Travel Promotion
- 21st August - Southern Opera (Love Life and Laughter Concert)
- 22nd August - Waste Buster Awards
- 23rd August - Beatlemania Concert
- 14th September - St Andrews College Pipe Band
- 18th September - Kids for Kids
- 19th September - Kids For Kids
- 23rd September - Whisper Down The Wind. John Denver
- 3rd-5th October - Mid Cant Children's Theatre (High School Musical)
- 7th-8th October - The Abba Show (Thank You For The Music World Tour)
- 9th-17th October - Ashburton Pottery Society
- 17th October - Stepping Out Fashion Parade
- 24th October - Ashburton Business Awards
- 5th November - Christchurch Symphony Orchestra
- 30th November - New Zealand Symphony Orchestra
- 7th December - Julie Hawk School Of Dance
- 12th - 13th December - Ashburton Academy of Dance

# What's Happening . . .

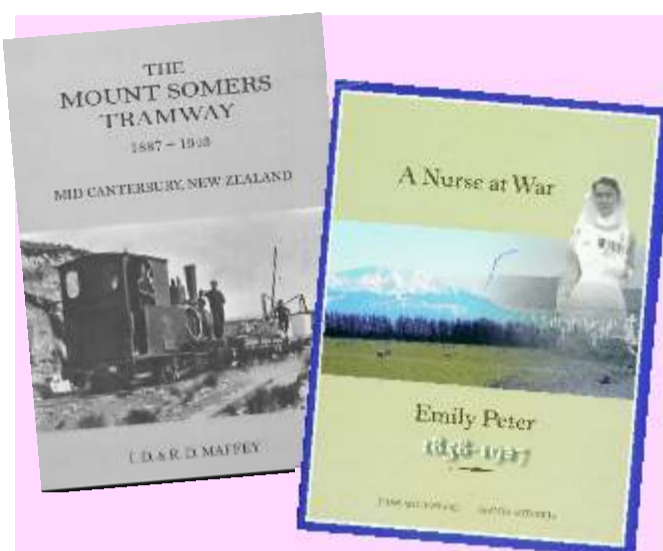
## At the Museum . . .

Two books have recently been added to the range of Mid Canterbury history books the Ashburton Museum has for sale.

The first is *The Mount Somers Tramway 1887-1943*, a much-expanded version of a book published in the 1970s. The original book sold out very quickly, and because of continuing demand Richard Maffey, son of Dale Maffey, the author of the original book, decided to carry out more research and republish his father's book, but with considerably more information and many new photographs.

Like the original book, this publication is selling fast. It would make an ideal gift for anyone with an interest in railways or a connection with the Mount Somers area.

Also out in time for Christmas is another book with a foothills connection, *A Nurse At War*, the story of Emily Peter, a woman from



Anama who trained as a nurse in London, served in South Africa during the Boer War and in Egypt and Serbia during World War One, before retiring back to Mid Canterbury.

Authors Joan Woodward and Glenys Mitchell have researched extensively, especially in Emily Peter's diaries and letters held at the Ashburton Museum, to create a very readable and well illustrated biography of an amazing woman.

Some of her diaries and other material are currently on display at the museum.

These two books join a large number of other Ashburton District publications the museum has for sale.

Coming up later in the year, probably late in October, will be the official opening of our new timeline display that shows how items used in everyday households, particularly timepieces, means of communication and entertainment items, have changed over the

150 years since the first Europeans came to live in what was to become the town of Ashburton.

This display is virtually complete, although the finishing touches will be left for the opening. It marks not only the 150th anniversary of settlement in the town of Ashburton but also the 50th anniversary of the Ashburton Museum and Historical Society, which operates the Ashburton Museum.

## At the Art Gallery . . .

Niki Hastings McFall — Polysynthesis — August 23-September 28, 2008

Opening and Artist's Talk Saturday, August 23 1.30pm

"I am a Pakeha-Samoan or Afakasai (Samoan transliteration of 'half-caste'). I was born here in Aotearoa and raised by my mother's

any Western notion of furniture. Another interesting thing that caught my eye was the 'mile-a-minute' creeper that wound and twisted its way through the forest, smothering, covering and colonising the trees." Niki Hastings-McFall (with thanks to Milford Galleries).



Niki Hastings McFall —

parents (the pakeha or palagi side) who were to all intents my mum and dad. I didn't meet my Samoan family until I was over 30.

"Through my work I investigate the similarities and differences between the two cultures that constitute my make-up. On my last trip to Samoa whilst travelling through Upolu and especially Savai'i I frequently noted fales (homes without walls) that were clear of furnishings, save for maybe a wooden pillow or (in one case) a TV on a beer crate, the fales were clear of clutter or

paintings Townwatch — a contemporary look at the Ashburton township over the past two years. From her East Street studio Digby has surveyed the rooftops. Some of the works focus on careful observation while others appear vibrant, loose and fragmented into jagged glimpses of her urban landscape. Digby's work documents and evaluates the social and physical structure of Ashburton's township from both a historical and contemporary perspective.

Digby's work is both challenging and experimental as she casts her eye over the township and delivers a series of works that move between figurative and abstract depictions. One senses a tension here between the historical and the contemporary

Margaret Digby — Town Watch — August 23-September 28, 2008

Opening and Artist's Talk Saturday, August 23, 1.30pm

Margaret Digby has completed the series of



Margaret Digby

both physically and conceptually. Works featuring the Ashburton Railway Station and the Somerset accentuate this concern.

MUKA Youth Print Exhibition — Young People Buy Art: No Adults Allowed — Wednesday, September 17, 2008 12 noon-6pm

A display of original contemporary art exclusively for young people aged 5-18. This event gives young people the opportunity to purchase original lithographs for a fraction of the normal price. It is the intention of the artists that the works will become the exclusive property of the purchaser.

A number of well-known artists from all over the world have been invited to produce small original lithographs. The works reflect the normal concerns of the artists; there is no patronising or "talking down" to children. Visitors to the show can buy a maximum of three lithographs for themselves, not for adults. All works are sold at a uniform low price to enable accessibility to their intended audience — children.

## Library Week August 18-24

Library Week has been running for more than 35 years. The week-long celebration of libraries and librarianship takes place in public, school, tertiary and special libraries all over New Zealand.

This year's theme — What's Your Story? Nou te kero — aims to highlight the individual reasons why people use libraries, be it to hire a DVD, research their family tree or use the library's internet services.

The Ashburton Public Library will be holding a number of Library Week events in keeping with the What's Your Story? theme.

Morning tea with Howard: On Tuesday, August 19, at 10.15am enjoy coffee and cake while listening to local author Howard Andrew share some of his stories. At the completion of this session everyone is welcome to join a tour of the library.

New Zealand's Biggest Storytime: Here at Ashburton Public Library we will join with libraries across New Zealand for NZ's Biggest Storytime on Wednesday, August 20, at 10.30am. Gareth, from Ashburton's Classic Hits, will be reading Diana Neild's wonderful book Piggity-Wiggity Jiggity Jig (Scholastic).

Discovering your family's story: On Thursday, August 21, at 10.30am we will be running a session on Local and Family History resources when people can discover the treasures available in the local history and newspaper archives collections.


Members of the Ashburton Family History Group will also be available to share their specialist knowledge and provide assistance with the Ancestry Library Edition database available through the library's on-line catalogue.

In addition to this, anyone interested in learning how to use the library catalogue and online resources can arrange a time for one-on-one assistance.

And of course, we'll also be running all our usual services. There has never been a better time to visit the library, with the dropping of new book charges and lots of new books to choose from.

For more information call in at the Ashburton Public Library on the corner of West and Havelock Streets, phone 308-7192 or visit the library's website at [www.adc.govt.nz/libweb](http://www.adc.govt.nz/libweb).

The library is open Monday to Friday 10am to 8pm, Saturday 10am to 1pm, and Sunday 1pm to 4pm.

 **Ashburton Public Library**

**Cnr Havelock and West Streets, Ashburton**

**Phone: 308 7192**

**Email:**  
[library@adc.govt.nz](mailto:library@adc.govt.nz)

**Website:**  
[www.adc.govt.nz/libweb](http://www.adc.govt.nz/libweb)

**Hours**  
**Monday – Friday**  
**10:00 am – 8:00 pm**

**Saturday**  
**10:00 am – 1:00 pm**

**Sunday**  
**1:00 pm – 4:00 pm**

Clip me out and keep me!



# New Books at the District Library

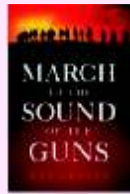
## FICTION

**The Front** by Patricia Cornwall  
Massachusetts State Investigator Win Garano is the hero of this investigation, into the 1962 murder of a young British woman thought to have been a victim of the Boston Strangler. Cornwall is best known for her books featuring her other character, medical examiner Dr Kay Scarpetta.



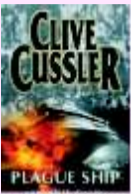
**March To The Sound Of Guns**  
by Ray Grover

A masterly New Zealand war novel, set in the First World War. Five characters describe their lives leading up to the war and experiences during the fighting. One is an older soldier, Colonel Malone, a Taranaki real life figure who led the Wellington Regiment. Three young volunteers from different walks of life, and a military nurse are the other characters.



**Plague Ship** by Clive Cussler  
with Jack Du Brul

Another thriller about the covert intelligence ship "Oregon". The crew has just completed a secret mission and on route for Karachi, they find a cruise ship adrift, its decks covered with the bodies of passengers who appear to have died violently. An engineered haemorrhagic virus is suspected. If Juan Cabrillo can get off the doomed ship alive, he must solve the mystery of who controls this deadly virus and what further use they mean to make of it.



**The Forgotten Garden** by Kate Morton

Nell is unofficially adopted by the O'Connor family when she is found alone on the Sydney docks, a four year old newly arrived from England. When she grows up, she feels the need to search out the truth about her origins, and goes to England. But in the end it is her granddaughter whose visit to Cornwall finally untangles the web of deceit and hidden identities.



**The Broken Window** by Jeffrey Deaver

Quadruplegic investigator Lincoln Rhyme is approached for help by the wife of a cousin he has not seen for years. Arthur Rhyme looks certain to be convicted of first degree murder, but claims he did not even know the victim. Cases with similar features are found, and it becomes clear that the perpetrator is implicating others by planted evidence and tip-offs to the police. Now Rhyme and his partner must find this ultimate stalker, who carefully researches not only his victims but those who will do the time for his crimes, leaving him free to kill again.



**The Queen's Sparrow** by Suzannah Dunn

The Tudors are the dynasty of choice at the moment. This novel describes the unhappy married life of Mary Tudor, "Bloody Mary" who, had she been able to provide an heir for England, would have truly changed the course of history. The story is told through the eyes of a craftsman who accompanies Mary's bridegroom Philip of Spain to England and, unlike his royal master, falls in love with an Englishwoman.



**Fractured** by Karin Slaughter

Society matron Abigail Campano arrives home to her palatial Atlanta home to find her daughter stabbed to death, and a stranger holding a knife standing over her. Instinctively, she attacks, but the man she kills is not the culprit, and the dead girl is not her daughter.



**Guilty Pleasures** by Tasmina Perry

Milfords is a family company specialising in luxury leather goods, with a country house as perk for the managing director. When Emma Bailey is left the directorship in her uncle's will, her glamorous cousin Cassandra determines to overthrow the legacy, by fair means or foul.



**Rogue** by Danielle Steel

Blake Williams is a brilliant entrepreneur with a charismatic personality. What he isn't is a good husband and reliable father figure. His wife Maxine finally acknowledges this, they divorce and she concentrates on her psychiatric practice, and later finds a new love. Just then, Blake visits Morocco at the time of an earthquake, and gets involved in the rescue and rehabilitation of orphans there. He asks Maxine to bring her psychiatric expertise to this problem.



**Devil May Care: A James Bond novel** by Sebastian Faulks  
writing as Ian Fleming. Set in the sixties, with all the 007 trimmings, the Sea Island cotton short sleeve shirts, the Aston Martin, beautiful women in need of rescue, sadistic power crazed maniac holding the world to ransom. And it really works.



## NON FICTION

**Daniel Vettori, Turning Point**  
with Richard Book

Daniel Vettori is a cricketing legend – the youngest spin bowler to take 100 test wickets, and as a bowler an unusual team captain, with definite ideas on leadership. In an easy and informal writing style Vettori discusses his own playing career, the international record of the Black Caps, team mates and noted opponents.



**Murder Or Mutiny** by Pamela Stephenson

It is well known that this famous comedian, married to an even more famous one in Billy Connolly, is New Zealand born. Her great-grandmother, Hira Moewaka, married Samuel Stephenson, a pioneer merchant at Russell. Samuel Junior had to emigrate to New Zealand to seek his fortune because of a tragedy that made the family penniless. His father, nicknamed Salty Sam, had lost his ship "Rosalie" and his life in what family history had always described as a mutiny during a voyage to the Molucca Islands in 1821. Pamela has inherited the wanderlust of her ancestor, and sets out to retrace the fatal voyage. Lovely illustrations, racy text, this is a treasure.



**How To Survive And Prosper In a Falling Property Market**

Inevitably, to follow the many titles on how to get rich quick in a rising property market, here is advice on investing in a downturn. Since 2002 we have experienced the strongest and most sustained rise in house prices since the 1970s.



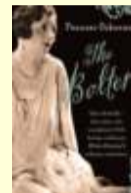
**From Poverty Bay To Broadway, The Story Of Tom Heeney** by Lydia Monin

Boxer Tom Heeney became world famous when picked by American heavyweight champion Gene Tunney as an opponent for the title in 1928. The Great Depression arrived in 1929, and the golden era of prize fighting was over. But the Gisborne plumber had had his taste of fame, and spent the rest of his life in the States. He said of his home country, "Now New Zealand is where I come from, and I like that too; but you've got to admit that it's a bit like a cemetery".



**The Bolter** by Frances Osborne

Lady Idina Sackville is famous for being the most notorious of the Happy Valley crowd in Kenya. Their epic bed-hopping activities were highlighted by the 1941 murder of Josslyn Hay, Earl of Erroll. But he was only one of the five husbands Idina divorced during her fascinating but unhappy life. The author is Idina's granddaughter.



**Best Recipes For Crockpots & Slow Cookers** by Robyn Martin

Imagine coming home to the alluring aroma of a slow cooked casserole, pot roast or lamb shanks. Or if you have a sweet tooth, decadent bread and butter pudding.



**Ronald Reagan and Margaret Thatcher, A Political Marriage** by Nicholas Wapshott

The shared conservative perspective and world view of these two world leaders dominated the 1980's. Whether you loved them or hated them, they forged a formidable international consensus. In each other, they found an inspiration to further action and a defence against compromising their beliefs. Letters between the two leaders have now been declassified, and form a sound basis for this study of their lives and shared values.



**We Bought A Zoo** by Benjamin Mee

Leaving an idyllic new existence in rural France to move his wife and young children back to England and a shaky zoo venture with the rest of his extended family, Benjamin Mee is a man who doesn't mind taking a risk. Dartmoor Wildlife Park offers a rundown mansion with 13 bedrooms, and animal enclosures needing urgent attention to keep the inhabitants, including tigers and lions, at home.



**1434, The Year A Magnificent Chinese Fleet Sailed to Italy And Ignited The Renaissance** by Gavin Menzies

Another theory by the author of 1421. He advances the idea that in 1434 official ambassadors from the Emperor of China arrived in Tuscany and met with the Pope. They presented him with examples of Chinese learning, art, maps, astronomy and other fields of knowledge, which led to the revolution in ideas and invention we call the Renaissance.



**The Looming Tower, al Qaeda's Road To 9/11** by Lawrence Wright

A detailed account of the events that led up to the destruction of the Twin Towers. Grim but gripping reading about al-Qaeda's activities including the first and second attacks on the World Trade Centre and the attempts of anti-terrorist agencies to prevent it from causing further carnage. Most interestingly, it gives an extended account of the upbringing and development of Osama bin Laden, and his rise in the organisation.



# New Books at the Children's Library

## Picture books

**Glasseye Creek** by Dawn McMillan. Illustrated by Raymond McGrath.

Life was hard in the early days on the West Coast and those early settlers were tough. This is a tall tale about Taffy, who came from Wales in search of gold. While entertaining friends one evening he is called away, and leaves his glass eye to guard his drink. The adventure of Taffy's glass eye is a rather macabre but funny story.



**How To Heal A Broken Wing** by Bob Graham

In the middle of the city nobody hears the thud as the bird hits the window of a skyscraper. Amidst all of the rushing feet nobody notices the bird with the broken wing until little Will comes along. This is a story of caring and hope, but most of all of patience. How To Heal A Broken Wing is told with a minimum of text but with plenty of expressive pictures.



## Non fiction

**Animals Robert Scott Saw: An adventure in Antarctica** by Sandra Markle.

It isn't often that a non-fiction book can be enjoyed as a story as well as for the factual information that it contains. This account of Robert Scott's Antarctic expeditions paints a vivid picture of the excitement of exploration, along with the cold, and the sheer energy needed for survival. Perhaps this is because the author herself was once caught in an Antarctic storm. Sketches, photographs and extra facts add to the book's value.



**Seen Under The Ground** by Alex Frith and Colin King.

Have you ever wondered what goes on under your feet? See Under The Ground gives a fascinating glimpse of life under a street and under a city. It looks at animals, insects, caves and volcanoes. Each picture has flaps to lift to find extra detail. It also shows the way that different layers reveal clues about the way people lived in different times. This is one of those books that makes us think about life beyond our own dimension.



## Chapter books

**Norton Saves The Day** by Bernadette Kelly. Illustrations by Liz Alger.

This is the third Pony Patch book, a great series for newer chapter book readers. The text is broken up with plenty of funny sketches, so that the pages aren't too daunting. Norton is a round and bad tempered pony but he has loads of personality. The book finishes with a glossary of horsey words and some riding tips.



**Edward's Eyes** by Patricia MacLachlan.

Jake is only three years old when his parents bring home the new baby. Yet when little Edward opens his eyes and gazes up at him he knows that this little brother will be special. Edward grows into a laughing boy, with a talent for baseball and for looking after their little sister, Sabine. Patricia MacLachlan has a gift for portraying close family life with all of its love and its tragedies.



## Teen reads

**The Dead And The Gone** by Susan Pfeffer.

When the moon is knocked out of its orbit a series of natural disasters follow. Hit by a tsunami and floods, New York will never be the same. Alex's parents are missing. Suddenly his plans for getting into the College of his choice aren't important anymore. The priority is to live, and to protect his two younger sisters. This is a sequel to Life As We Knew It and a really good read if you like the survival genre. How would you cope if life as we knew it was over?



**Shadow Of The Mountain** by Anna Mackenzie.

This has a good blend of the elements that keep you reading a novel. A touch of mystery. Why is Geneva's family falling apart? Why does she want to climb Kaitiaki and where does Stephen fit into the picture? Add friendships, both good and bad, a touch of romance, and an accident just waiting to happen and you have one of those books that you don't want to put down. Another success for award winning New Zealand author Anna Mackenzie.

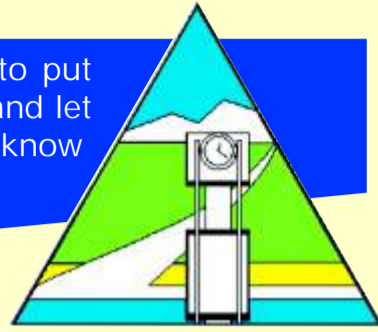


# Ashburton District in the Next 10 Years — Have Your Say —

Right now Ashburton District Council is developing its next 10 year Community Plan. This plan details what services and facilities Council intends to provide over the next 10 years, and how it intends to fund these.

We would like to know what you think of Ashburton District at the moment, what you see as the priorities over the next 10 years and who should be working to provide these things.

This is your opportunity to put your ideas down on paper and let the rest of the community know what you think is important.



Firstly, what do you think of Ashburton District as a place to live right now?

Ashburton District is a great place to live

- Yes – definitely
- Yes – mostly
- Not really
- Definitely not

What makes you think that?

.....  
.....

Like anywhere, we have issues we are facing and will need to tackle. What do you think are the big issues for Ashburton District and what are the most important things we need to do to improve our quality of life?

The 3 biggest issues Ashburton District faces over the next 10 years are:

1. ....  
2. ....  
3. ....

The 3 things that would improve the quality of life in Ashburton District most over the next 10 years are:

1. ....  
2. ....  
3. ....

Ashburton District Council provides a range of services and facilities on behalf of the community to make this a better place to live. Currently the Council uses its income in the following ways.

Roads and Footpaths	28%
Water	9%
Wastewater, stormwater and stockwater	14%
Waste and Recycling	9%
Library	3%
Community facilities and services	14%
Democracy	4%
Economic Development	3%
Parks and open Spaces	5%
Environmental Services	9%
Other services	2%

What do you think Council should focus on in the coming 10 years?

The activities I think the Council should focus more on are....

1. ....  
2. ....  
3. ....

Is there anything more you would like to add that we may need to know about?

.....  
.....  
.....  
.....

Thank you for taking the time to provide your thoughts on what is important for our future.

Please send your completed survey to:  
District Diary Survey  
Freepost 127284  
Ashburton 7700

## Free to Post

Or drop it in to the Ashburton District Council offices at: 5 Baring Square West, Ashburton